

PERFIDIA
 BERTKAMPFERT
 CHARLESCHAPLIN
 POMPAYCIRCUNSTANCIA
 MISAPUNTESMUSICALES
 ALBERTODOMÍNGUEZCORUÑA
 AREYOULONESOMETONIGHT
 RICHARDRODGERS
 OVERTHERAINBOW
 PAULSIMON
 ANAPOLA
 JOSEPHLACALLE
 ABEGONDO
 SANTALUCIA
 MÚSICA
 SECUNDARIA
 CHARLESTRENET
 IFYOUWANNABEHAPPY
 FLAUTA
 CANTHELPFALLINGINLOVE
 JUSTCALLEDTOSAYILOVEYOUAROUNDTHEWORLD
 RENATORASCEL
 IESVIÓS
 ELVISPRELEY
 HAROLDARLEN
 STEVIEMONDER
 LOVEMETENDER
 BRIDGEOVERTROUBLEDWATER
 ARRIVEDERICROMA
 BEYONDTHESEA
 MIKEOLDFIELD
 EDWARDELGAR
 PARTITURAS
 STRANGERSINTHENIGHT
 VICTORYOUNG
 FRANKGUIDA
 LOUHANDMAN
 MOONLIGHTSHADOW
 DOREMI



IES VIÓS

PARTITURAS PARA FLAUTA

RELACIÓN DE OBRAS

AMAPOLA	Joseph Lacalle
ARE YOU LONESOME TONIGHT	Lou Handman
AROUND THE WORLD	Victor Young
ARRIVEDERCI ROMA	Renato Rascel
BEYOND THE SEA	Charles Trenet
BRIDGE OVER TROUBLED WATER	Paul Simon
CAN'T HELP FALLING IN LOVE	George Weiss
DO RE MI	Richard Rodgers
I JUST CALLED TO SAY I LOVE YOU	Stevie Wonder
IF YOU WANNA BE HAPPY	Frank Guida
LOVE ME TENDER	Elvis Presley
MOONLIGHT SHADOW	Mike Oldfield
OVER THE RAINBOW	Harold Arlen
PERFIDIA	Alberto Domínguez
POMPA Y CIRCUNSTANCIA	Edward Elgar
SANTA LUCÍA	Popular
SMILE	Charles Chaplin
STRANGERS IN THE NIGHT	Bert Kampfert

Amapola

Joseph Lacalle

Flauta



Fl. ⁶



Fl. ¹²



Fl. ¹⁸



Fl. ²³



Fl. ²⁸



Are You Lonesome Tonight?

Lou Handman

Flauta



Fl. ⁶



Fl. ¹¹



Fl. ¹⁶



Fl. ²¹



Fl. ²⁶



Fl. ³⁰



Arrivederci Roma

Renato Rascel

Flauta

Fl. ⁵

Fl. ⁹

Fl. ¹³

Fl. ¹⁷

Fl. ²¹

Fl. ²⁵

Fl. ²⁹

Beyond The Sea

Charles Trenet

Flauta



Fl. ⁵



Fl. ¹⁰



Fl. ¹⁵



Fl. ²¹



Fl. ²⁷



Fl. ³²



Bridge Over Troubled Water

Paul Simon

Flauta

Fl. 8

Fl. 15

Fl. 21

Fl. 28

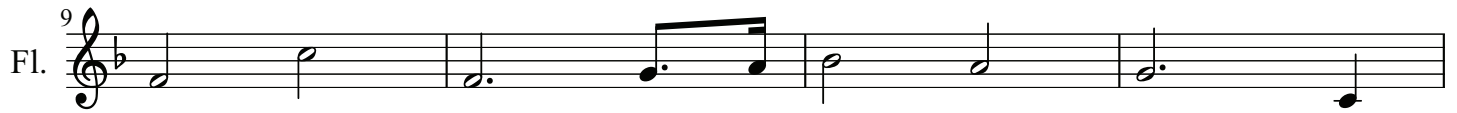
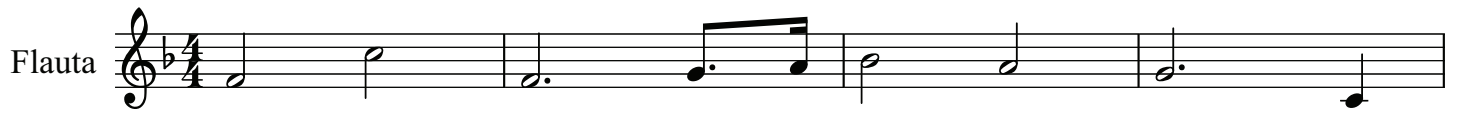
Fl. 36

Fl. 43

Fl. 49

Can't Help Falling In Love

Weiss, Peretti, Creatore



I Just Called To Say I Love You

Stevie Wonder

Flauta

Fl. ⁷

Fl. ¹³

Fl. ¹⁹

Fl. ²⁵

Fl. ³¹

If You Wanna Be Happy

Frank Guida

Flauta



Fl.



Fl.



Fl.



Fl.



Fl.



Love Me Tender


Elvis Presley

Flauta

Moonlight Shadow

Mike Oldfield

Flauta



Fl.



Fl.



Fl.



Fl.



Fl.



Over The Rainbow

Harold Arlen

Flauta  Musical notation for Flute, measures 1-4. The key signature has one flat (Bb) and the time signature is 4/4. The notes are: G4 (quarter), A4 (quarter), Bb4 (quarter), A4-G4 (beamed eighth notes), F4 (quarter), E4 (quarter), D4 (half).

Fl. ⁵  Musical notation for Flute, measures 5-8. The notes are: C4 (quarter), Bb4 (quarter), A4-G4 (beamed eighth notes), F4 (quarter), E4 (quarter), D4 (quarter), C4 (quarter). Measure 8 ends with a first ending bracket and a repeat sign.

Fl. ⁹  Musical notation for Flute, measures 9-11. Measure 9 starts with a fermata over a C4 quarter note. Measure 10 has a rest followed by a Bb4 quarter note. Measure 11 has eighth notes: A4, G4, F4, E4, D4, C4, Bb4, A4.

Fl. ¹²  Musical notation for Flute, measures 12-14. Measure 12 has a fermata over a Bb4 quarter note. Measure 13 has a fermata over an A4 quarter note. Measure 14 has a rest followed by a Bb4 quarter note. Measure 15 has eighth notes: A4, G4, F4, E4, D4, C4, Bb4, A4.

Fl. ¹⁵  Musical notation for Flute, measures 15-18. Measure 15 has eighth notes: A4, G4, F4, E4, D4, C4, Bb4, A4. Measure 16 has a fermata over a Bb4 quarter note. Measure 17 has a fermata over an A4 quarter note. Measure 18 has a fermata over a G4 quarter note.

Fl. ¹⁹  Musical notation for Flute, measures 19-22. Measure 19 has eighth notes: A4, G4, F4, E4, D4, C4, Bb4, A4. Measure 20 has a fermata over a Bb4 quarter note. Measure 21 has a fermata over an A4 quarter note. Measure 22 has a fermata over a G4 quarter note.

Fl. ²³  Musical notation for Flute, measures 23-26. Measure 23 has eighth notes: A4, G4, F4, E4, D4, C4, Bb4, A4. Measure 24 has eighth notes: A4, G4, F4, E4, D4, C4, Bb4, A4. Measure 25 has eighth notes: A4, G4, F4, E4, D4, C4, Bb4, A4. Measure 26 has a fermata over a G4 quarter note.

Perfidia

Alberto Domínguez

Flauta

Fl. ⁶

Fl. ¹²

Fl. ¹⁶

Fl. ²²

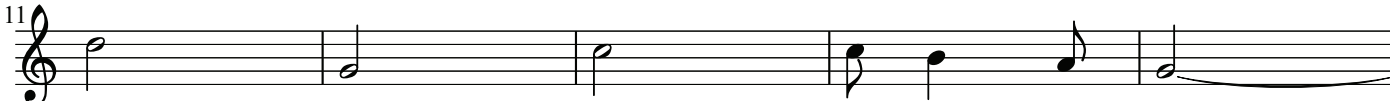
Fl. ²⁸

Pompa y Circunstancia

Edward Elgar

Flauta  Musical notation for Flute, measures 1-5. The key signature is one sharp (F#) and the time signature is 2/4. The melody begins with a half note G4, followed by quarter notes A4, B4, and C5, and ends with a half note B4.

Fl. ⁶  Musical notation for Flute, measures 6-10. The melody continues with quarter notes D5, E5, and F#5, followed by a half note G5, and ends with quarter notes A5 and G5.

Fl. ¹¹  Musical notation for Flute, measures 11-15. The melody consists of half notes G5, F#5, and E5, followed by quarter notes D5 and C5, and ends with a half note B4.

Fl. ¹⁶  Musical notation for Flute, measures 16-20. The melody starts with a quarter rest, followed by half notes G4 and F#4, then quarter notes E4, D4, and C4, and ends with a half note B3.

Fl. ²¹  Musical notation for Flute, measures 21-25. The melody consists of half notes B3, A3, and G3, followed by quarter notes F#3 and E3, and ends with a half note D3.

Fl. ²⁶  Musical notation for Flute, measures 26-30. The melody begins with a quarter note F#4, followed by quarter notes E4, D4, and C4, then half notes B3 and A3, and ends with quarter notes G3 and F#3.

Fl. ³¹  Musical notation for Flute, measures 31-35. The melody starts with a half note G3, followed by a quarter rest, then half notes F#3 and E3, and ends with quarter notes D3 and C3.

Fl. ³⁶  Musical notation for Flute, measures 36-40. The melody consists of half notes B2, A2, and G2, followed by quarter notes F#2 and E2, and ends with a half note D2.

Santa Lucía

Popular Italiana



Smile

Charlie Chaplin


Flauta  Musical staff for Flauta, measures 1-4. The staff is in treble clef, key of B-flat major, and 4/4 time. It contains a sequence of eighth notes: B-flat, C, D, E, F, G, A, B-flat, C, D, E, F, G, A, B-flat, C.

Fl. ⁵  Musical staff for Fl. (Flute), measures 5-8. The staff is in treble clef, key of B-flat major, and 4/4 time. It contains a sequence of eighth notes: B-flat, C, D, E, F, G, A, B-flat, C, D, E, F, G, A, B-flat, C.

Fl. ⁹  Musical staff for Fl. (Flute), measures 9-12. The staff is in treble clef, key of B-flat major, and 4/4 time. It contains a sequence of eighth notes: B-flat, C, D, E, F, G, A, B-flat, C, D, E, F, G, A, B-flat, C.

Fl. ¹³  Musical staff for Fl. (Flute), measures 13-16. The staff is in treble clef, key of B-flat major, and 4/4 time. It contains a sequence of eighth notes: B-flat, C, D, E, F, G, A, B-flat, C, D, E, F, G, A, B-flat, C.

Fl. ¹⁷  Musical staff for Fl. (Flute), measures 17-20. The staff is in treble clef, key of B-flat major, and 4/4 time. It contains a sequence of eighth notes: B-flat, C, D, E, F, G, A, B-flat, C, D, E, F, G, A, B-flat, C.

Fl. ²¹  Musical staff for Fl. (Flute), measures 21-24. The staff is in treble clef, key of B-flat major, and 4/4 time. It contains a sequence of eighth notes: B-flat, C, D, E, F, G, A, B-flat, C, D, E, F, G, A, B-flat, C.

Fl. ²⁵  Musical staff for Fl. (Flute), measures 25-28. The staff is in treble clef, key of B-flat major, and 4/4 time. It contains a sequence of eighth notes: B-flat, C, D, E, F, G, A, B-flat, C, D, E, F, G, A, B-flat, C.

Fl. ²⁹  Musical staff for Fl. (Flute), measures 29-32. The staff is in treble clef, key of B-flat major, and 4/4 time. It contains a sequence of eighth notes: B-flat, C, D, E, F, G, A, B-flat, C, D, E, F, G, A, B-flat, C.

Strangers In the Night

Bert Kampfert

Flauta 

Fl. ⁵ 

Fl. ⁹ 

Fl. ¹³ 

Fl. ¹⁷ 

Fl. ²¹ 

Fl. ²⁵ 

Fl. ²⁹ 