



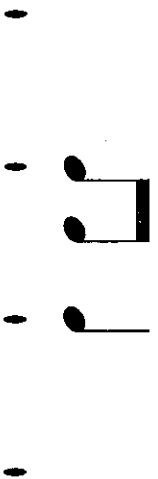


▶ Completa las fórmulas rítmicas de cuatro pulsaciones.

a)



b)



c)



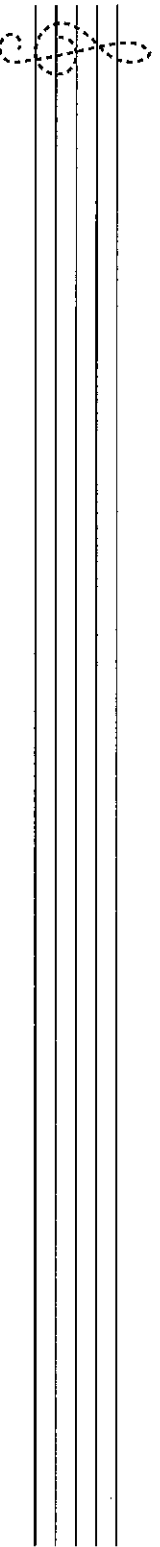
d)



▶ Elige dos de las fórmulas anteriores y cópialas a continuación sobre la línea. Después, interprétalas palmeando.



▶ Escribe las notas en el pentagrama.



mi re do mi sol la sol mi do



▶ Sigue las series.

A musical staff in treble clef showing a sequence of notes: G4, A4, B4, C5, B4, A4, G4. This sequence is followed by three measures, each containing a whole rest, indicated by a large horizontal oval.

A musical staff in treble clef showing a sequence of notes: G4, A4, B4, C5, B4, A4, G4. This sequence is followed by three measures, each containing a whole rest, indicated by a large horizontal oval.

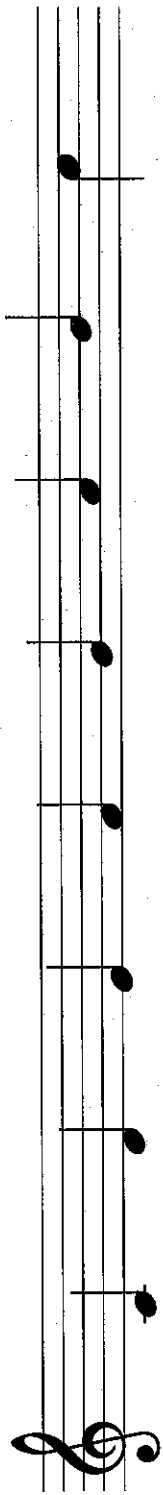
▶ Completa los compases.

A musical staff in 2/4 time signature. The first measure contains a quarter note G4. The second measure contains a quarter rest. The third measure contains a quarter note A4. The fourth measure contains a quarter rest. The fifth measure contains a quarter note B4. The sixth measure contains a quarter rest. The seventh measure contains a quarter note C5. The eighth measure contains a quarter rest.

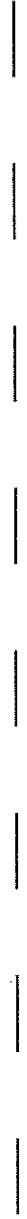
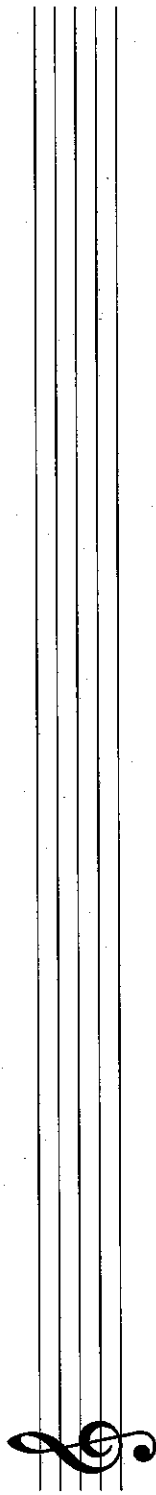
A musical staff in 2/4 time signature. The first measure contains a quarter note G4. The second measure contains a quarter rest. The third measure contains a quarter note A4. The fourth measure contains a quarter rest. The fifth measure contains a quarter note B4. The sixth measure contains a quarter rest. The seventh measure contains a quarter note C5. The eighth measure contains a quarter rest.



● Copia la escala de Do en el pentagrama.



ascendente ↗



● Continúa las series en sentido ascendente.

do - re -

fa - sol -

si - do -

sol - la -

mi - fa -

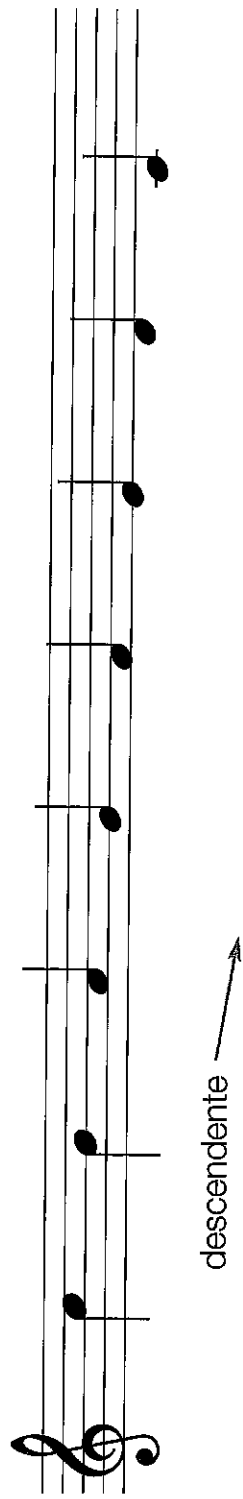
la - si -

● Sigue la serie.

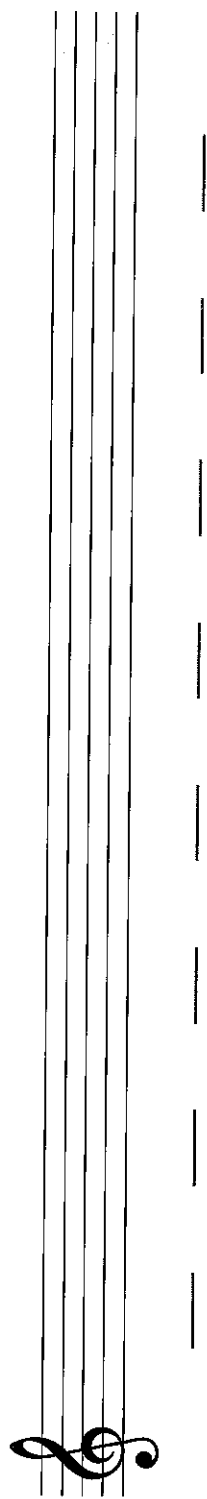
do - re - mi

re - mi - fa

● Copia las notas de la escala de Do en sentido descendente.



descendente



● Continúa las series en sentido descendente.

do - si -	<input type="text"/>	mi - re -	<input type="text"/>	si - la -	<input type="text"/>
sol - fa -	<input type="text"/>	la - sol -	<input type="text"/>	re - do -	<input type="text"/>

● Sigue la serie.

do - si - la	<input type="text"/>	si - la - sol	<input type="text"/>	<input type="text"/>	<input type="text"/>
--------------	----------------------	---------------	----------------------	----------------------	----------------------



