

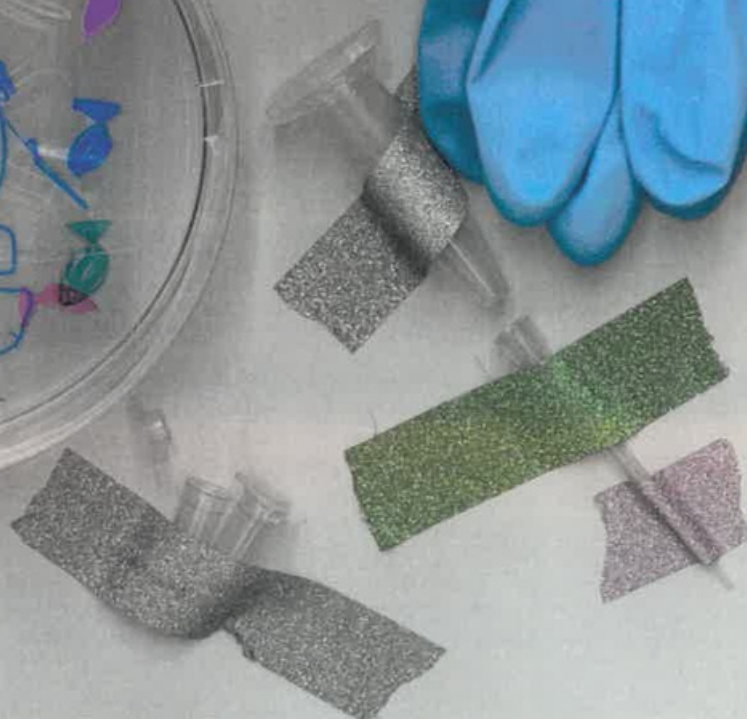
# ACRÓBATA



WALTER A

# BIÓLOGA

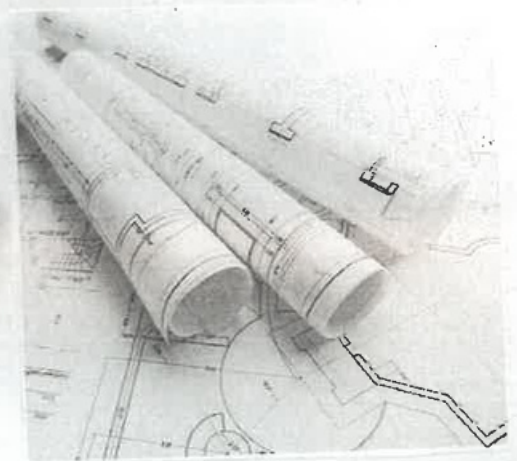
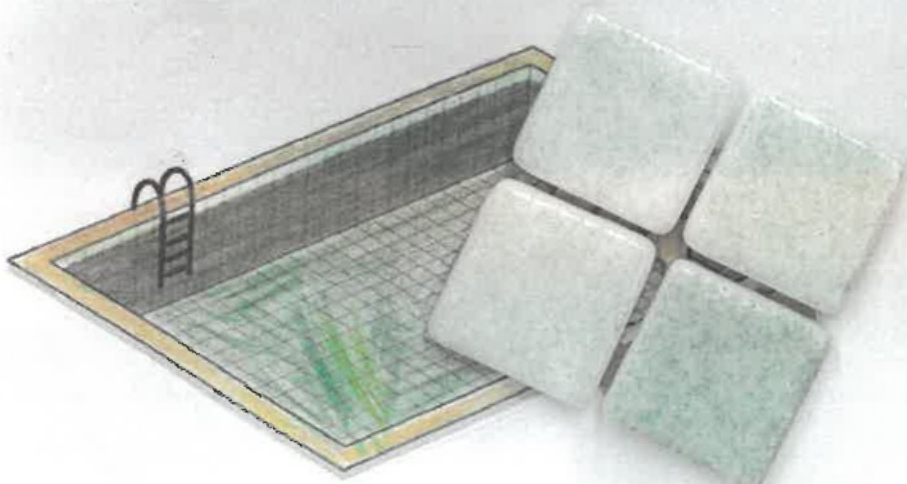
Tejmo



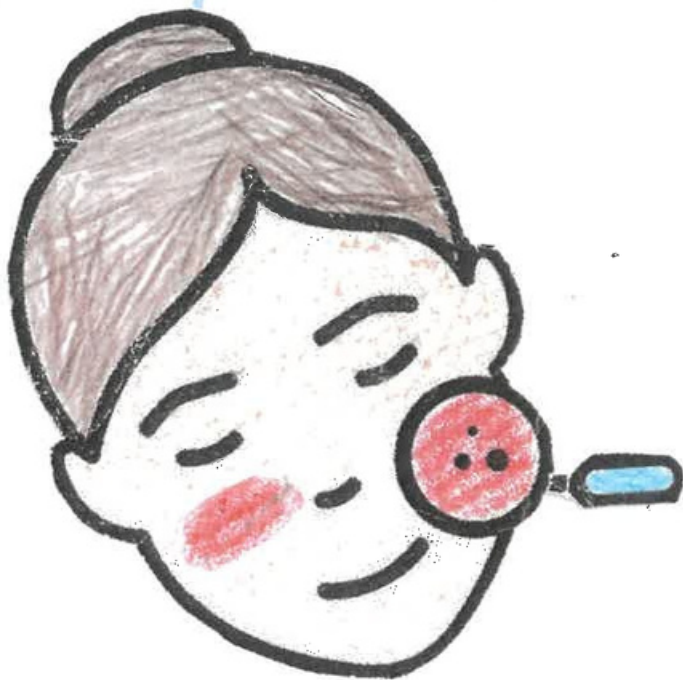
**PARAFILM**  
"M"  
LABORATORY FILM

# C

# CONSTRUTORA



# DERMATÓLOGA



# ELECTRICISTA



# FONTANERA



CAJA DE HERRAMIENTAS

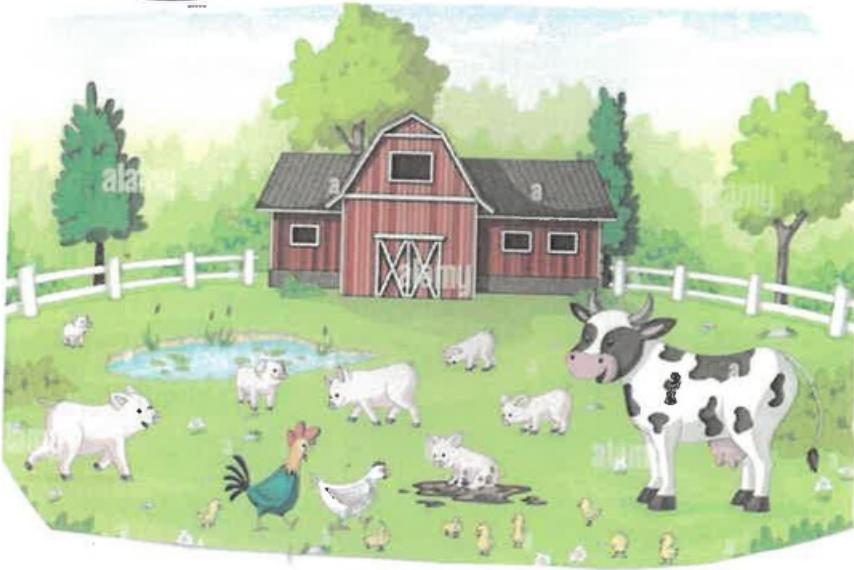


FONTANERA

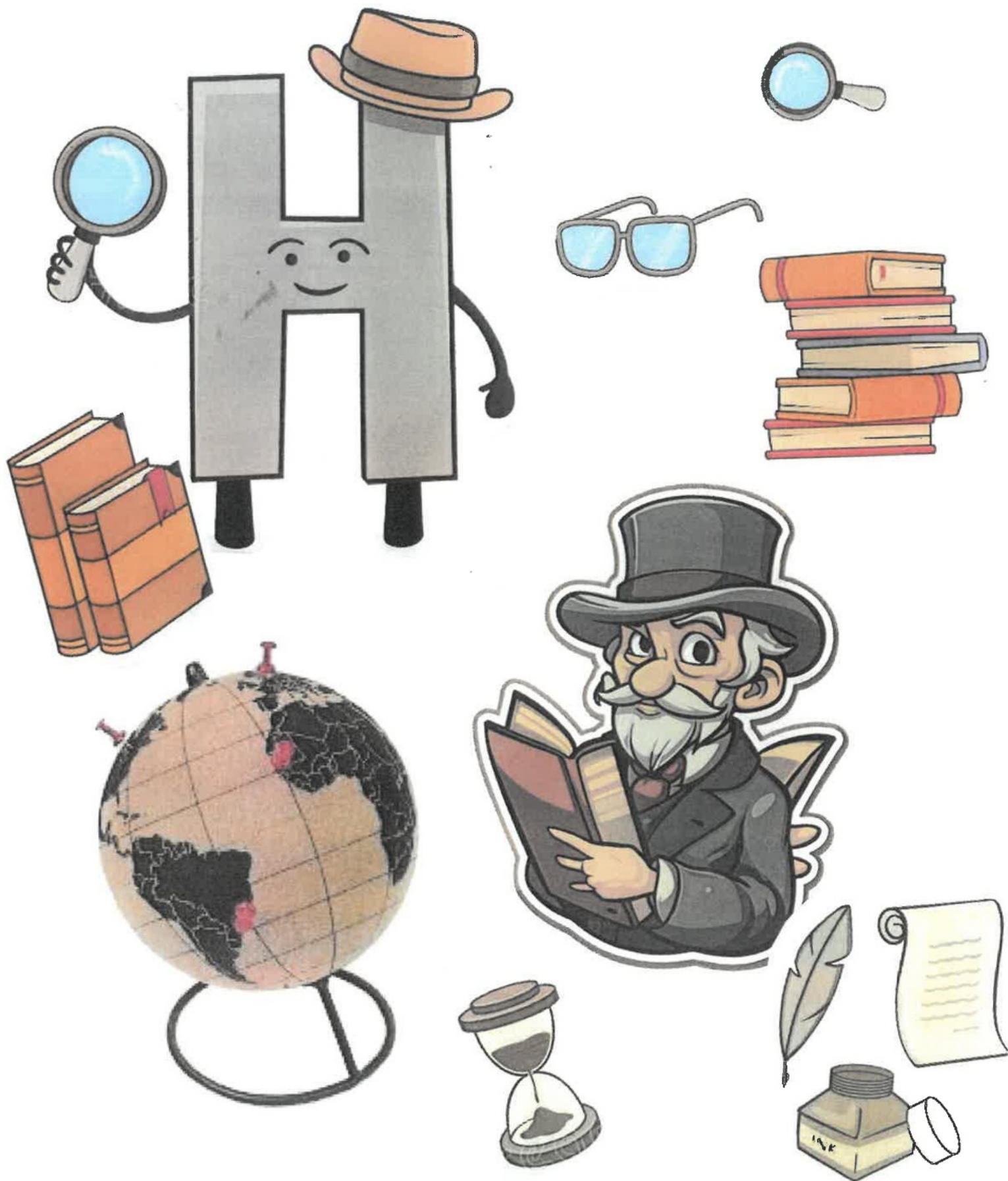


FUGAS DE AGUA

# GRANXEIRA

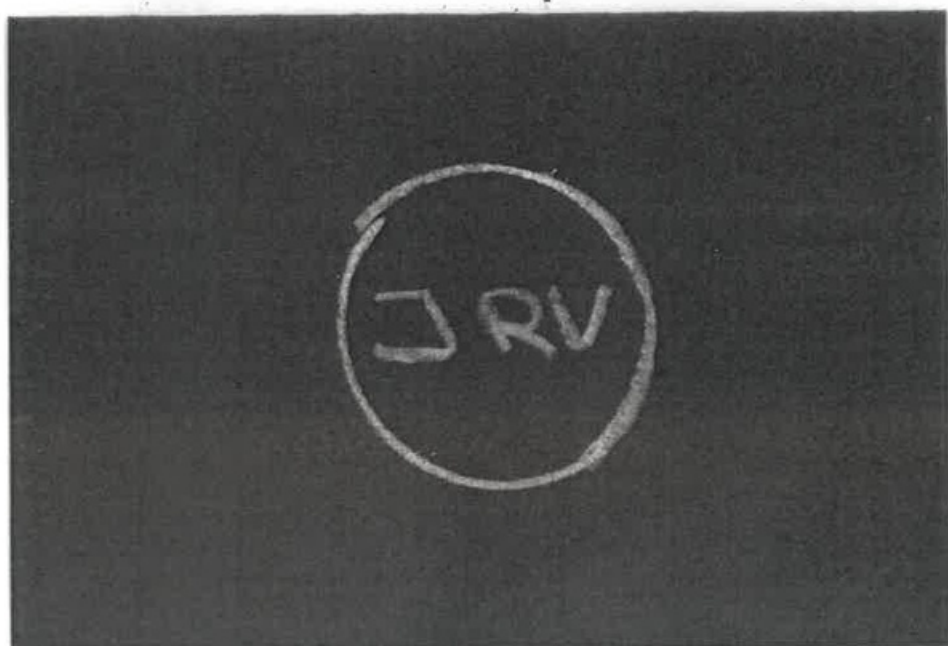
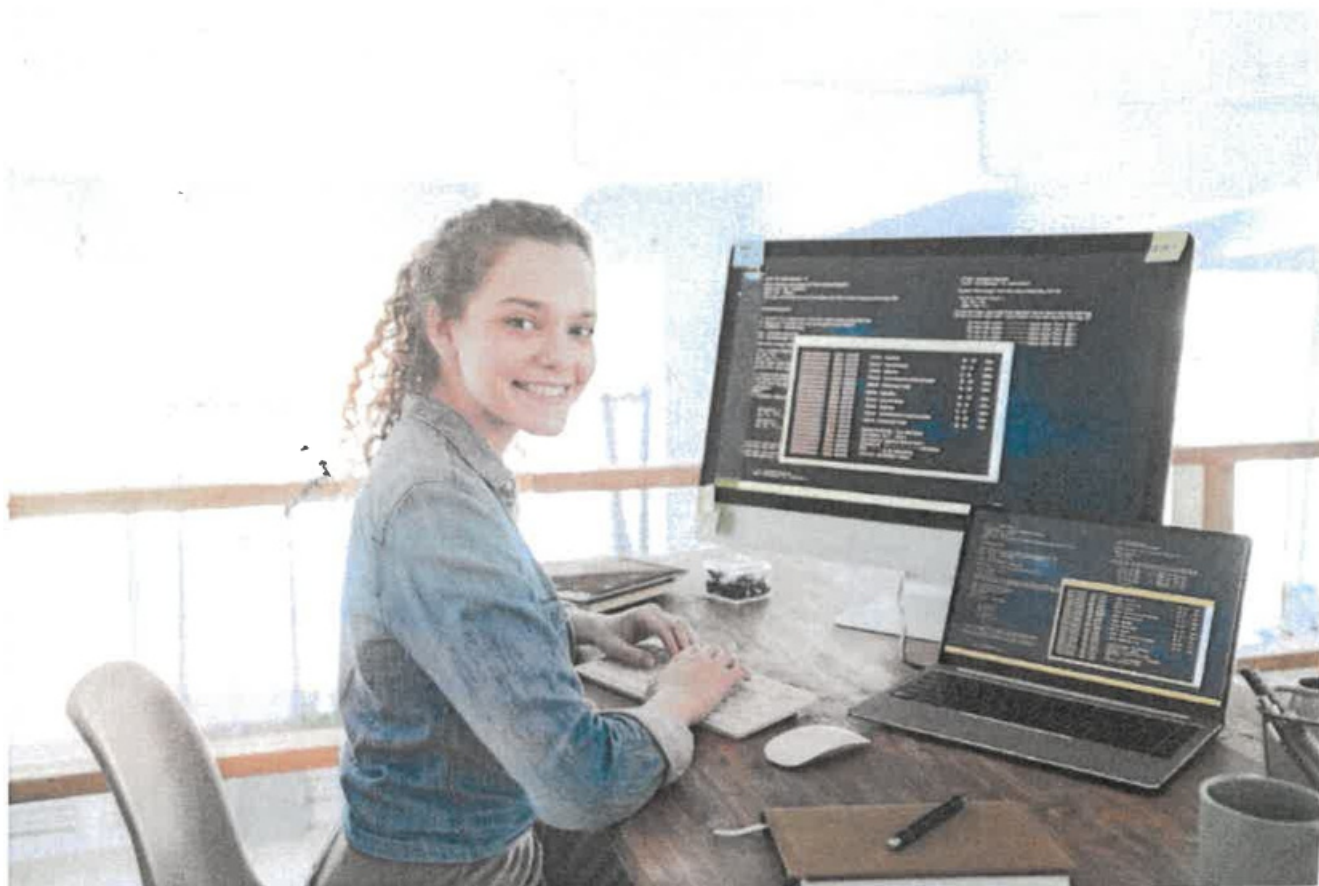


# HISTORIADORA





# INFORMÁTICA



# LOCUTORA DE RADIO



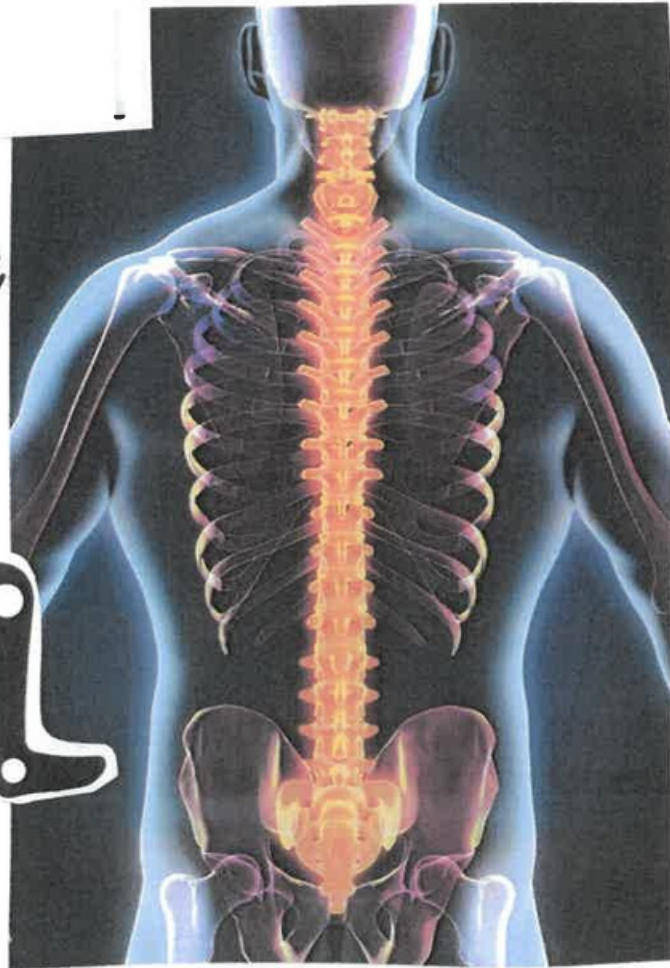
# MECÁNICA



# NOTARIA



# OSTEÓPATA



MÚSCULOS



ARTICULACIONES



# PATRÓN DE EMBARCACIÓN



# QUIROMASAJISTA

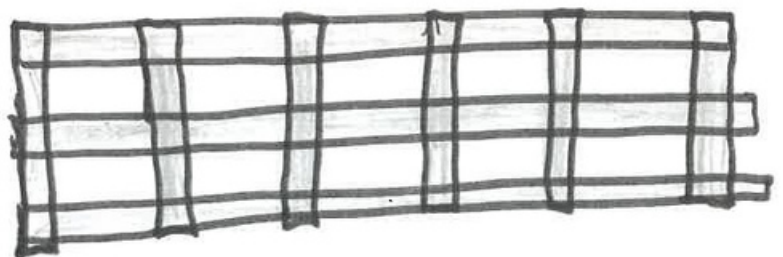
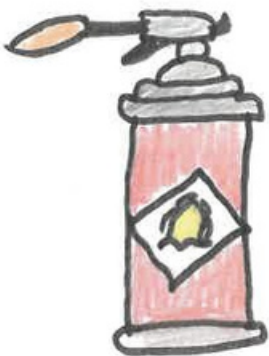
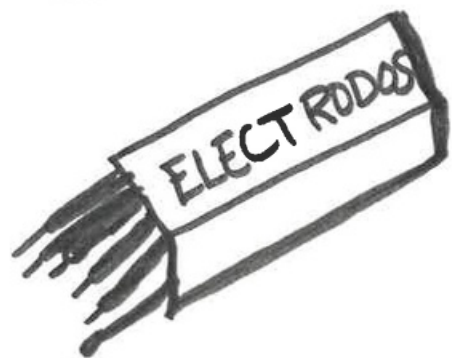


# RELOXEIRA

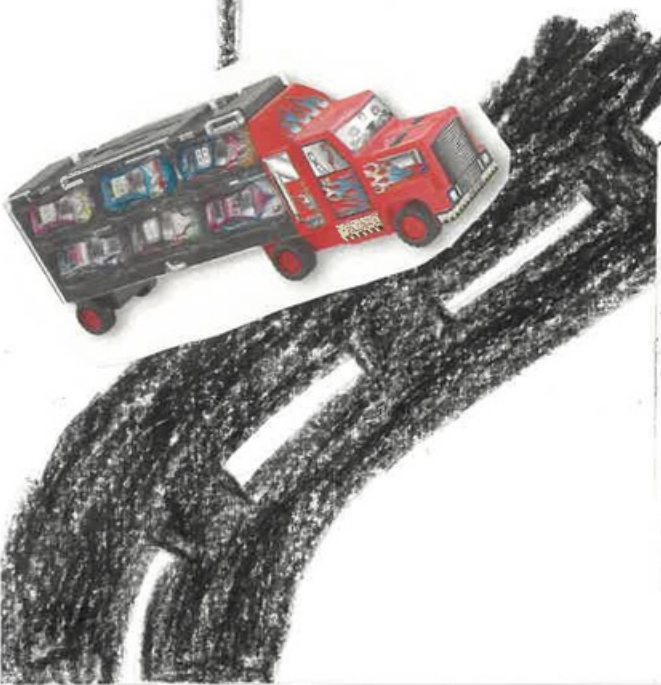




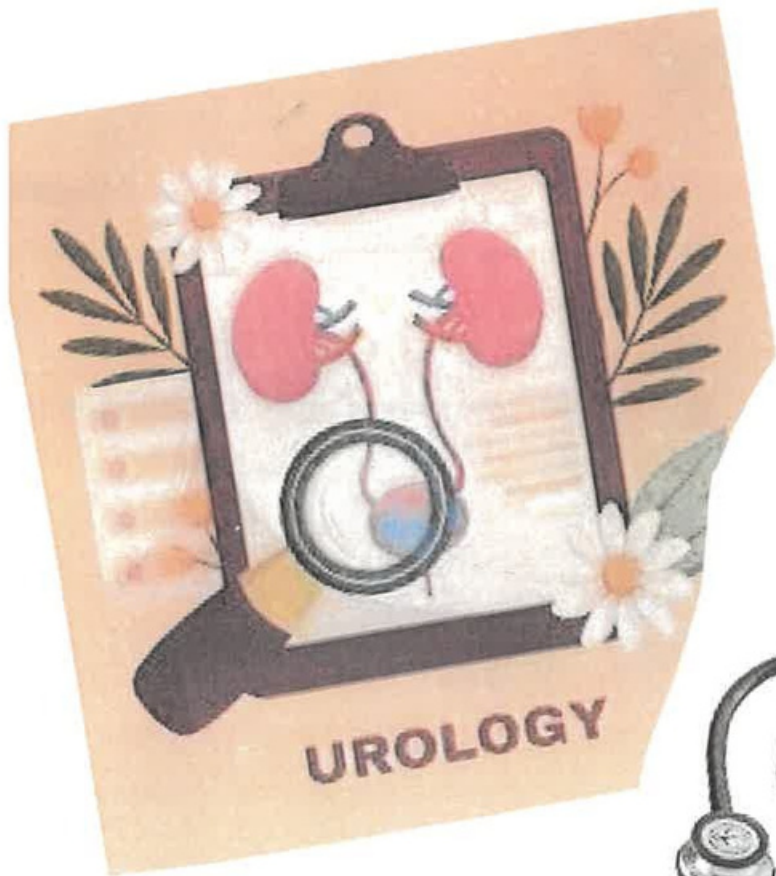
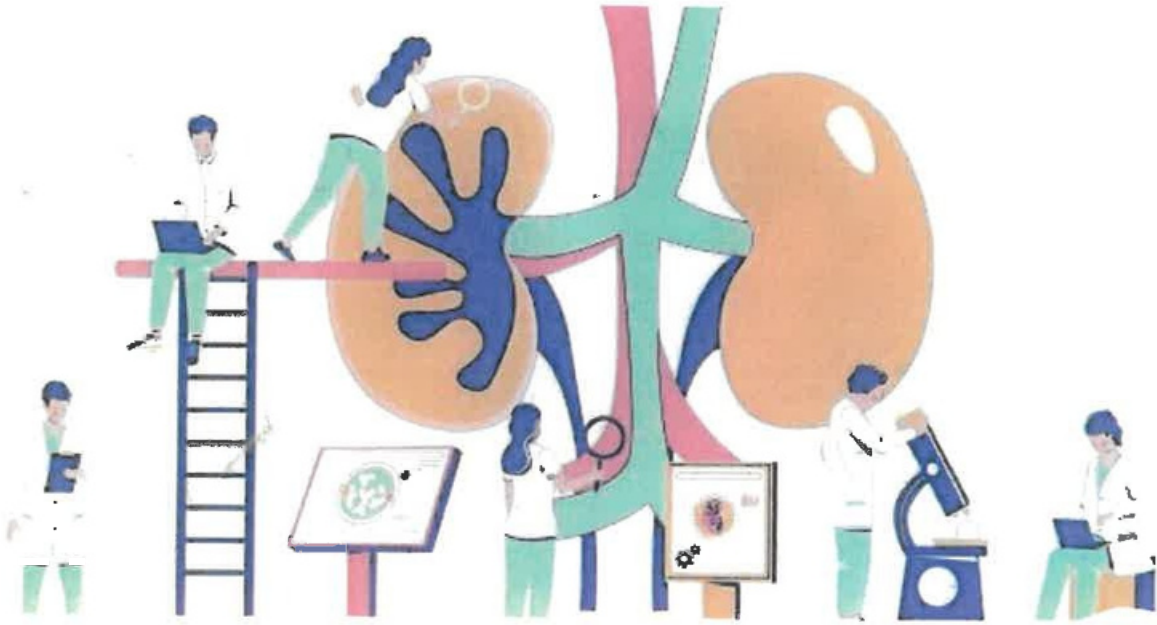
# SOLDADORA



# T R A N S P O R T I S T A



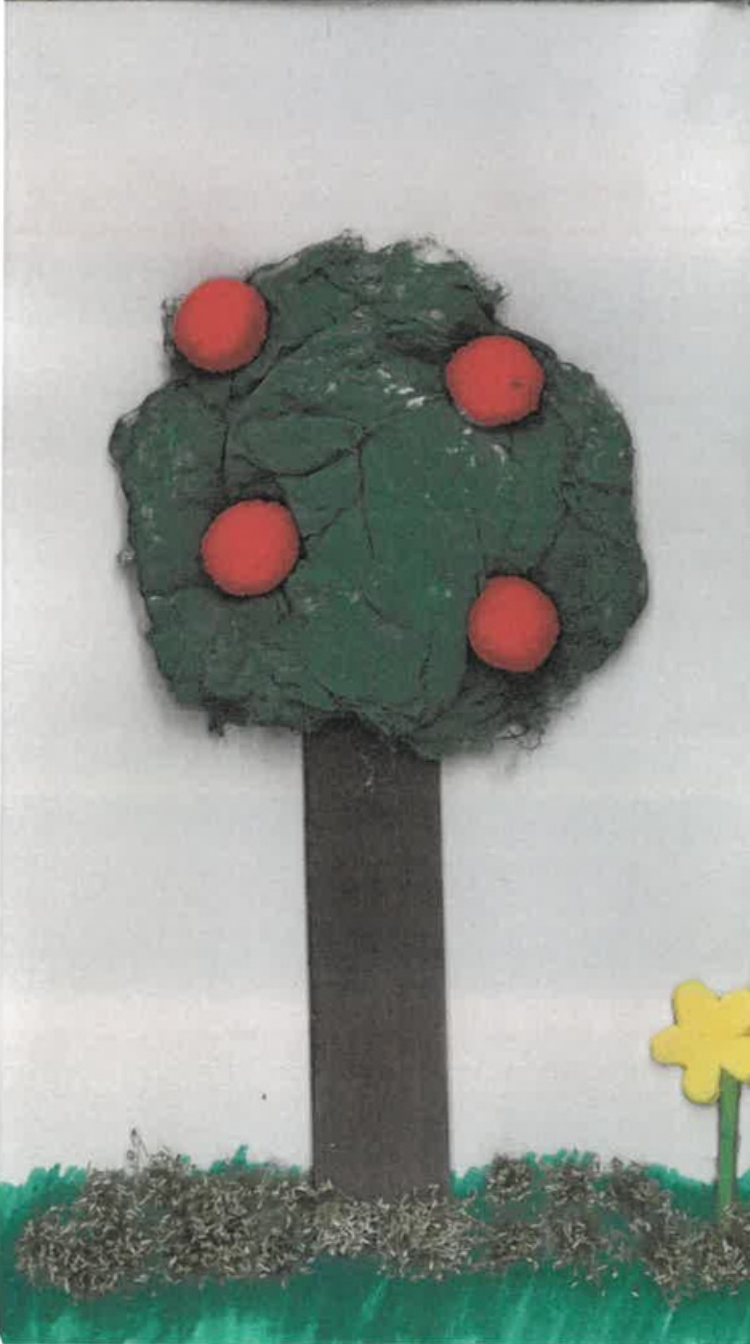
# URÓLOGA



# VETERINARIA



# XARDINEIRA



# ZAPATEIRA

Unha zapateira é unha persoa que se dedica fundamentalmente a fabricar e reparar calzado, tamén realiza outras funcións relacionadas co couro, como reparar cintos, introducir buracos ou coser outros obxectos como bolsos, carteiras,...

