

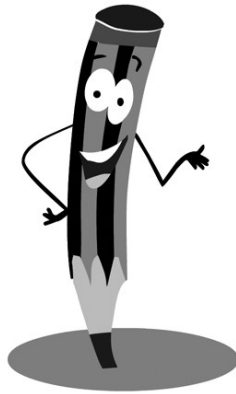
1 Debuxa as cabezas para formar as figuras negra e corchea. Interpreta.

A musical staff with a quarter note and a dotted quarter note. To the right, there are two sets of empty boxes for drawing heads. The first set has four boxes, and the second set has four boxes.

A musical staff with an eighth note and a dotted eighth note. To the right, there are two sets of empty boxes for drawing heads. The first set has four boxes, and the second set has four boxes.

2 Debuxa as plicas que faltan e interpreta con palmadas.

A musical staff with a dotted quarter note and an eighth note. To the right, there are two sets of empty boxes for drawing stems. The first set has four boxes, and the second set has four boxes.



A musical staff with a dotted quarter note and an eighth note. To the right, there are two sets of empty boxes for drawing stems. The first set has four boxes, and the second set has four boxes.

A musical staff with a dotted quarter note and an eighth note. To the right, there are two sets of empty boxes for drawing stems. The first set has four boxes, and the second set has four boxes.

A musical staff with a dotted quarter note and an eighth note. To the right, there are two sets of empty boxes for drawing stems. The first set has four boxes, and the second set has four boxes.