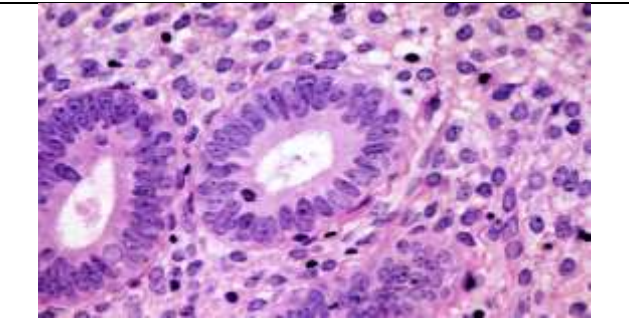
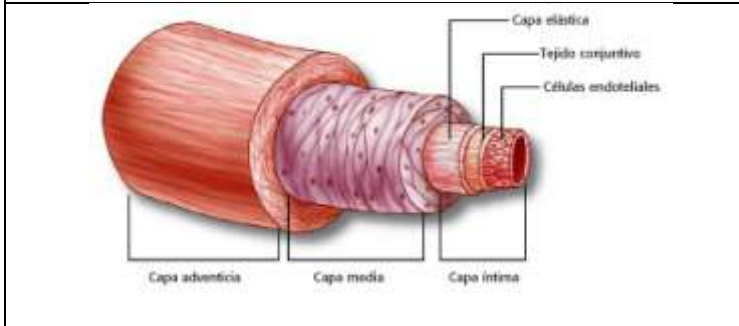


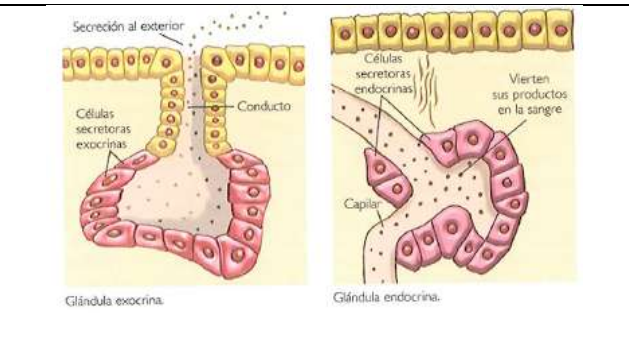
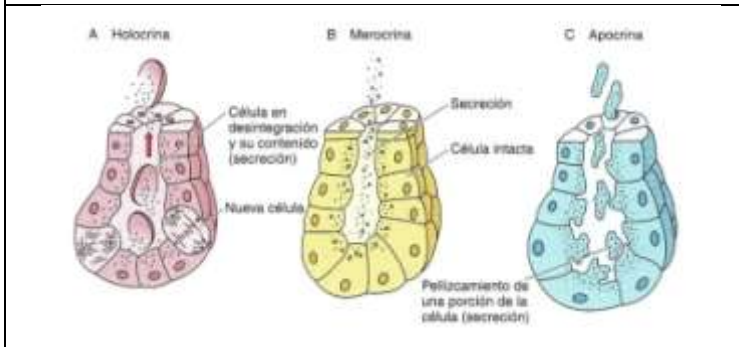
EPITELIOS DE REVESTIMIENTO

EPITELIO ESTRATIFICADO PLANO QUERATINIZADO (EPIDERMIS)



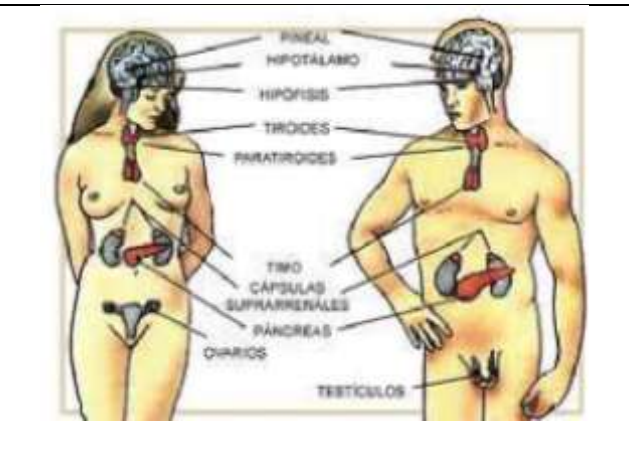
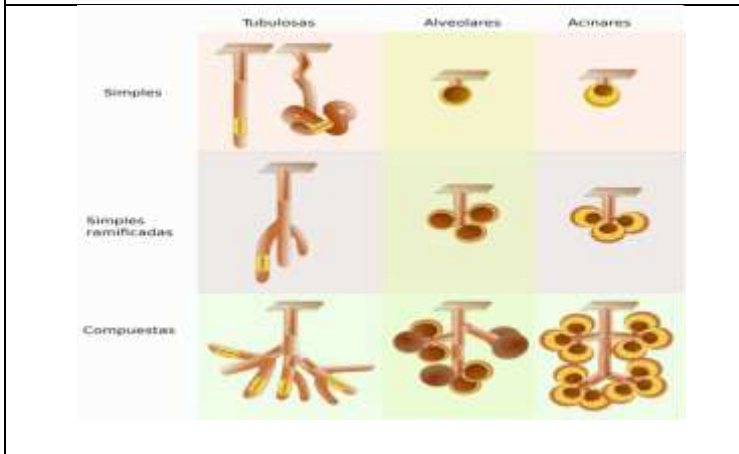
VASO SANGUÍNEO CON ENDOTELIO

TECIDO GLANDULAR



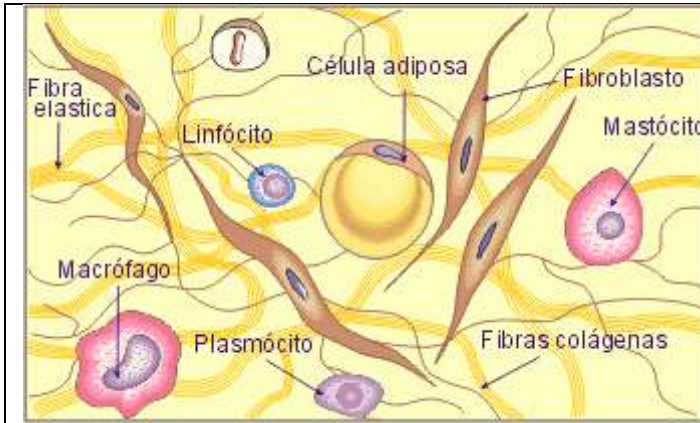
TIPOS DE SECRECIÓN

ESTRUTURA GLÁNDULAS

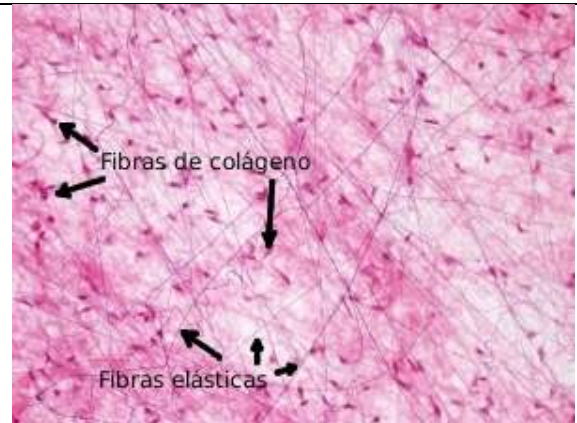


FORMAS DAS GLÁNDULAS

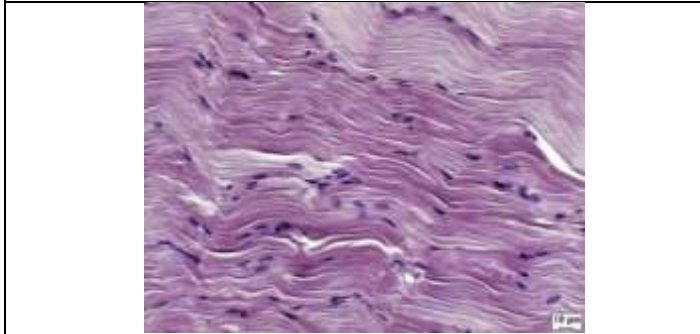
GLÁNDULAS ENDOCRINAS



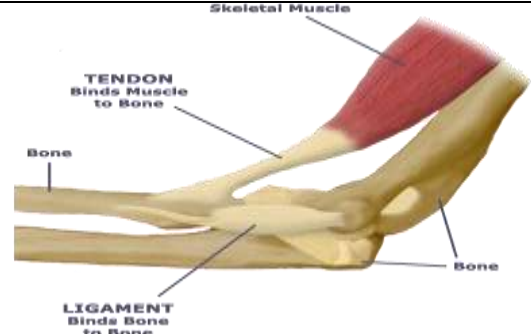
TECIDO CONXUNTIVO: COMPOÑENTES



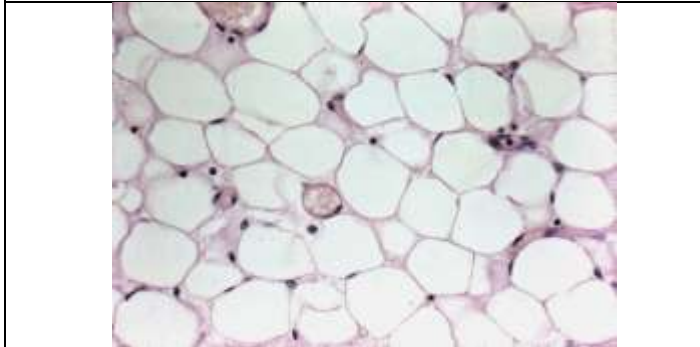
TECIDO CONXUNTIVO LAXO



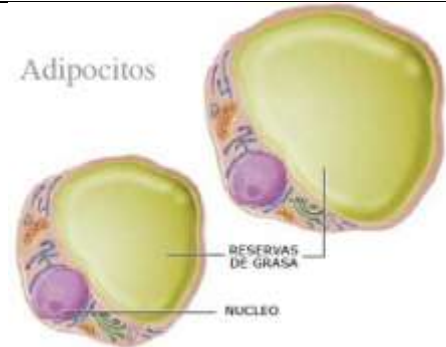
TECIDO CONXUNTIVO DENSO: TENDÓN



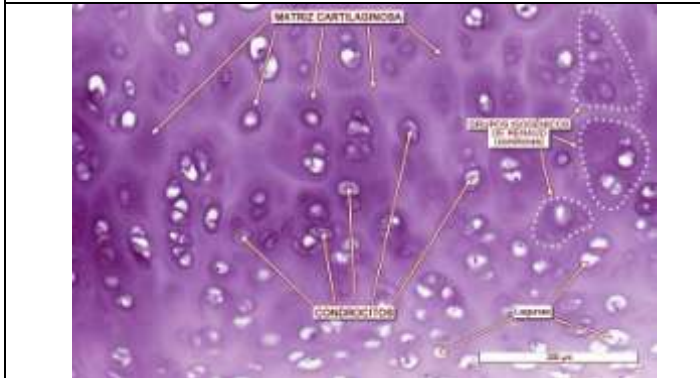
TENDÓN E LIGAMENTOS



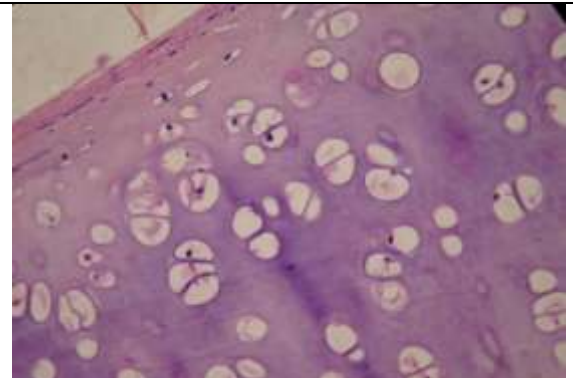
TECIDO ADIPOSITO UNILOCULAR



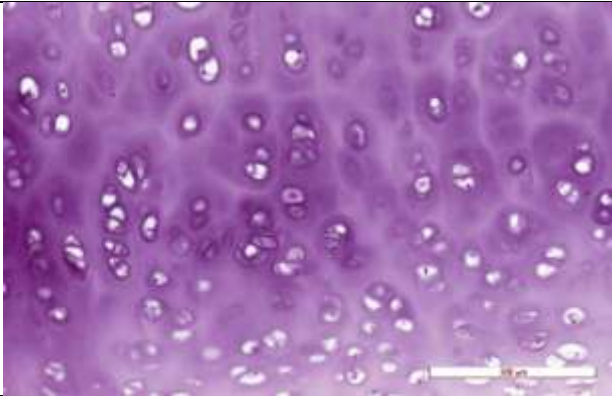
ADIPOCITOS



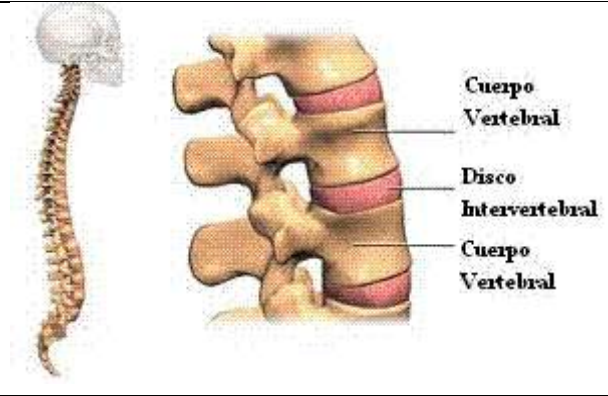
TECIDO CARTILAXINOSO: COMPOÑENTES



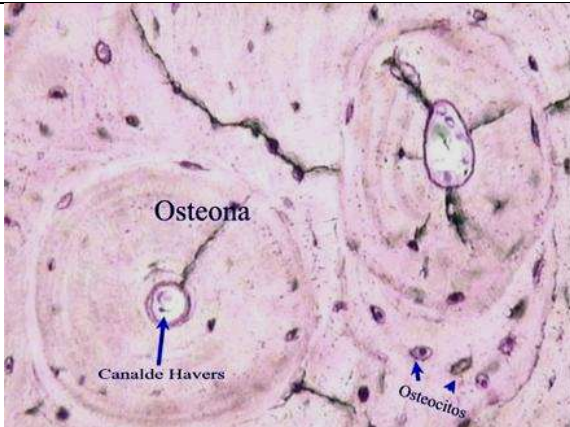
CARTÍLAXE ELÁSTICO (PAVILLÓN AURICULAR)



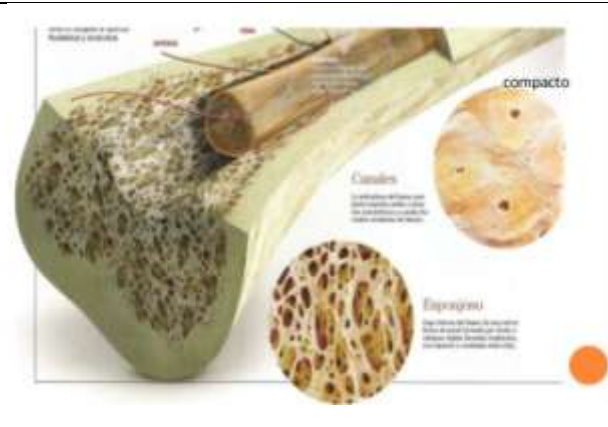
CARTÍLAXE HIALINO



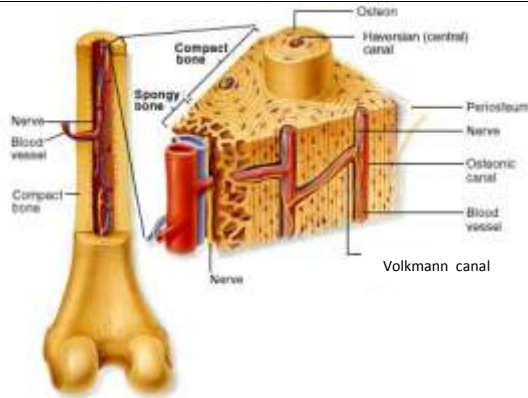
DISCOS INVERTEBRAIS



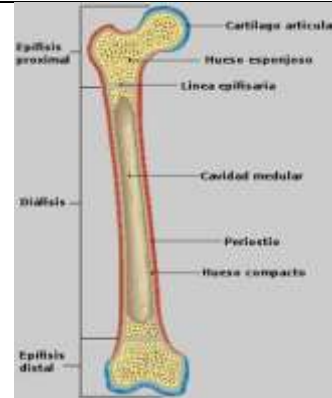
TECIDO ÓSEO



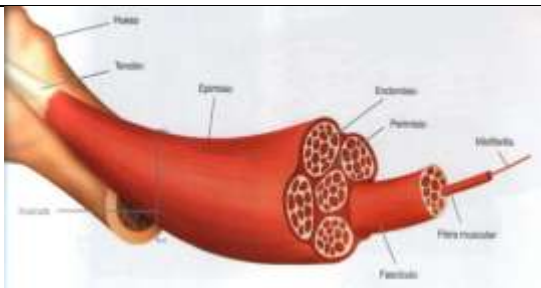
TECIDO ÓSEO COMPACTO E ESPONXOSO



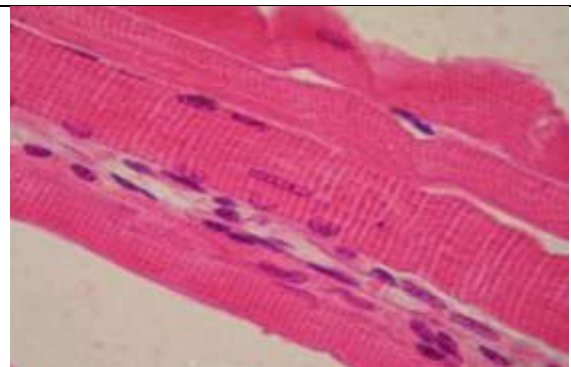
TECIDO ÓSEO: ESTRUTURA



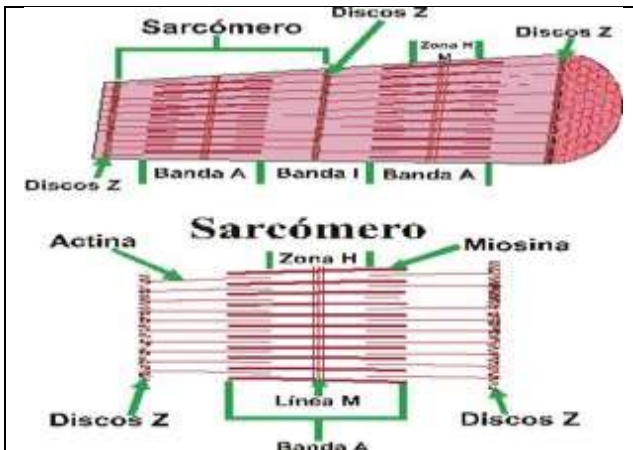
ESTRUTURA BÁSICA DUN OSO LONGO



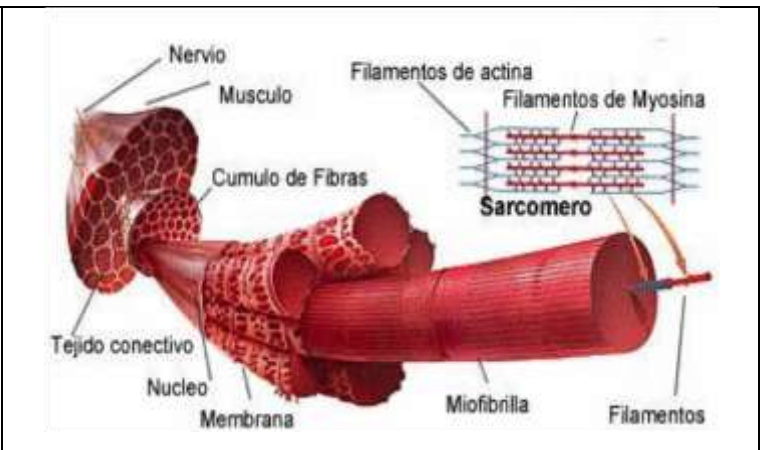
MÚSCULO: ESTRUTURA XERAL



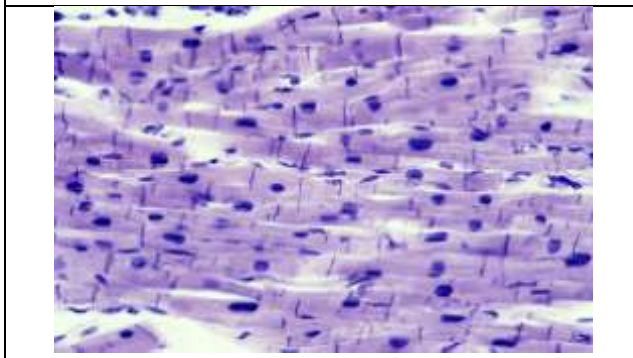
TECIDO MUSCULAR ESTRIADO OU ESQUELÉTICO



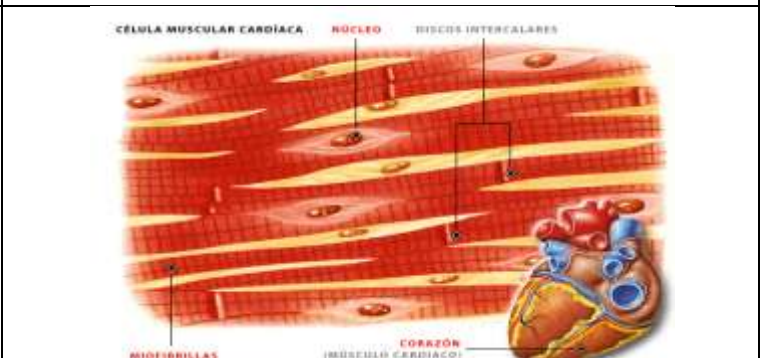
ESTRUTURA SARCÓMERO



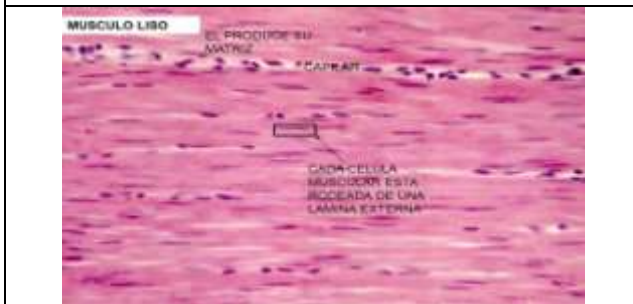
ESTRUTURA DO MÚSCULO ESTRIADO



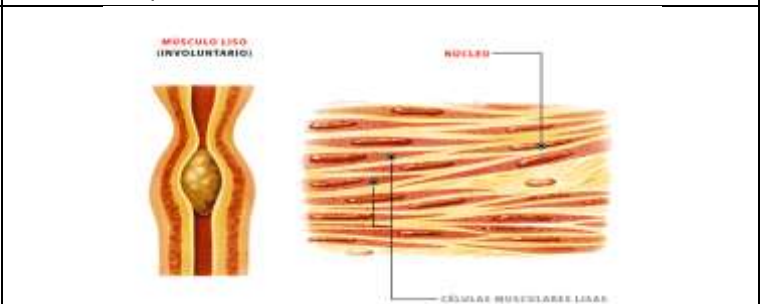
TECIDO MUSCULAR CARDÍACO



ESQUEMA DO TECIDO MUSCULAR CARDÍACO



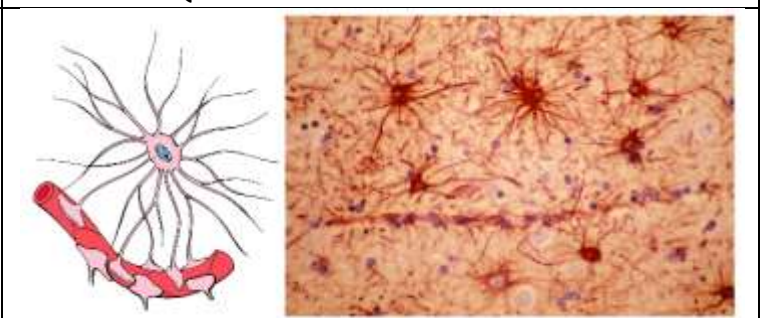
TECIDO MUSCULAR LISO



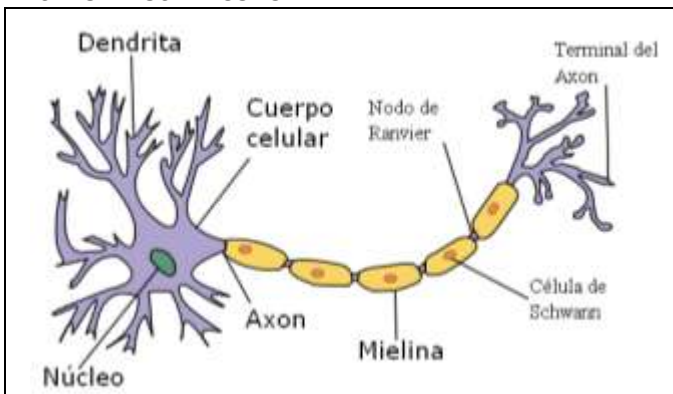
ESQUEMA DO TECIDO MUSCULAR LISO



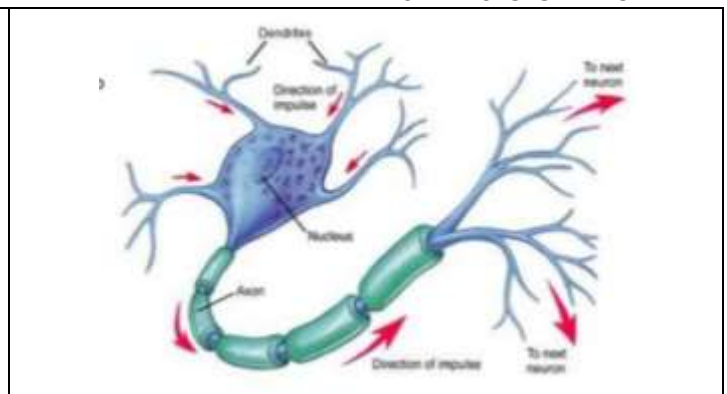
TECIDO NERVIOSO: COMPOÑENTES



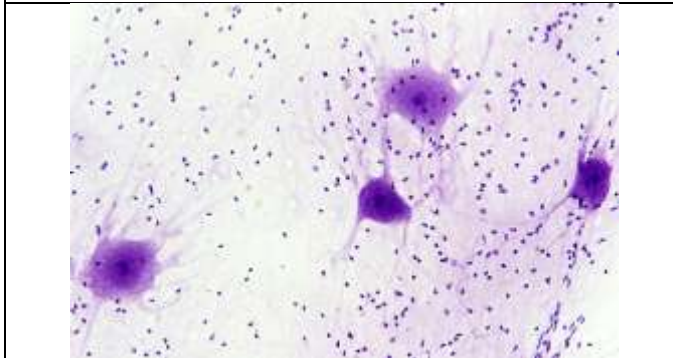
TECIDO NERVIOSO: ASTROCITOS



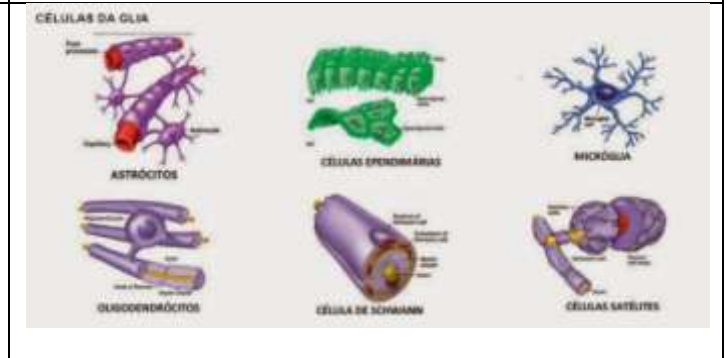
ESTRUTURA DA NEURONA



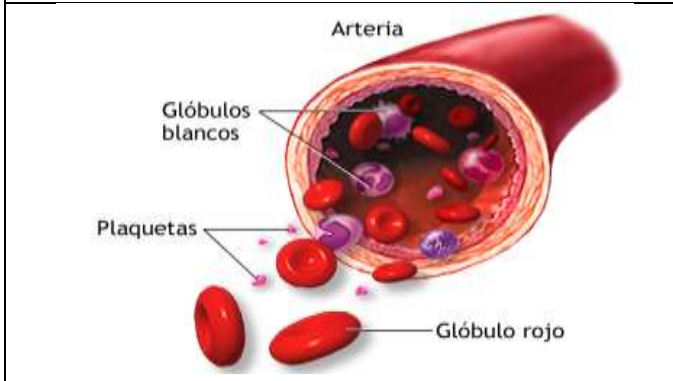
DIRECCIÓN DO IMPULSO NERVIOSO



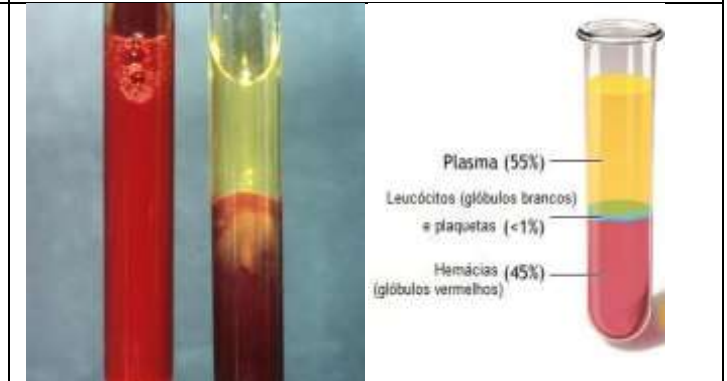
TECIDO NERVIOSO (NEURONAS)



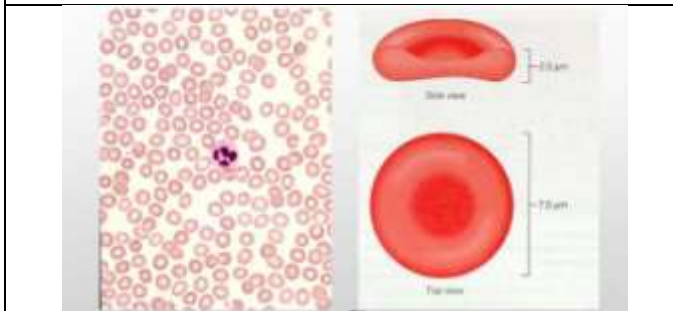
TECIDO NERVIOSO: CÉLULAS DA GLIA



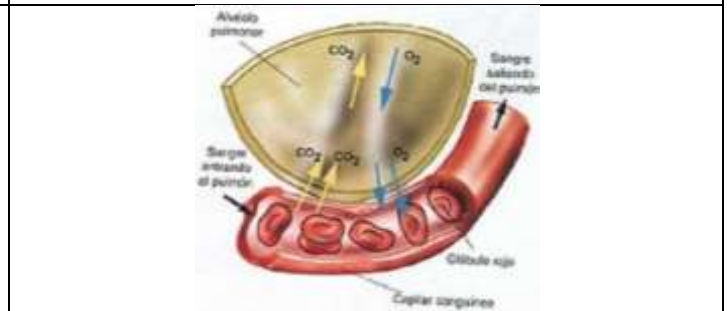
SANGUE



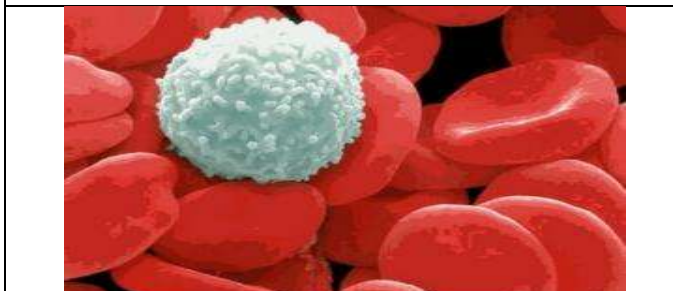
COMPONENTES DO SANGUE



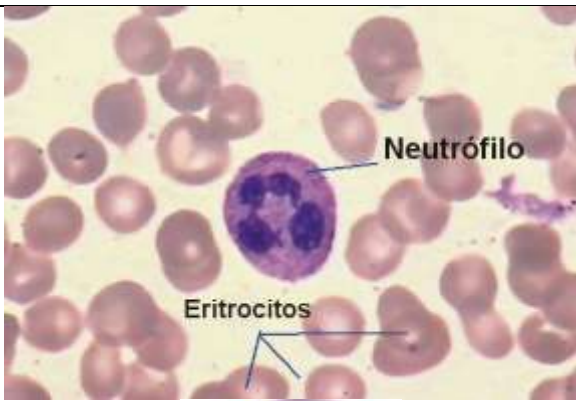
ERITROCITOS OU HEMATÍES



INTERCAMBIO DE GASES NOS PULMÓN



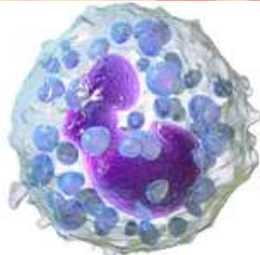
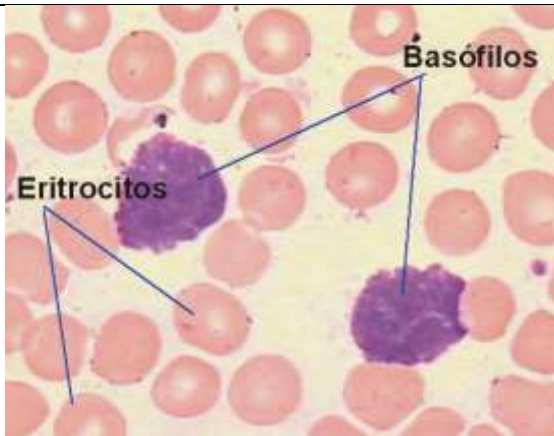
GRUPO DE ERITROCITOS CUN LEUCOCITO



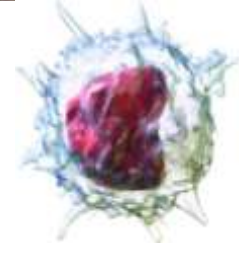
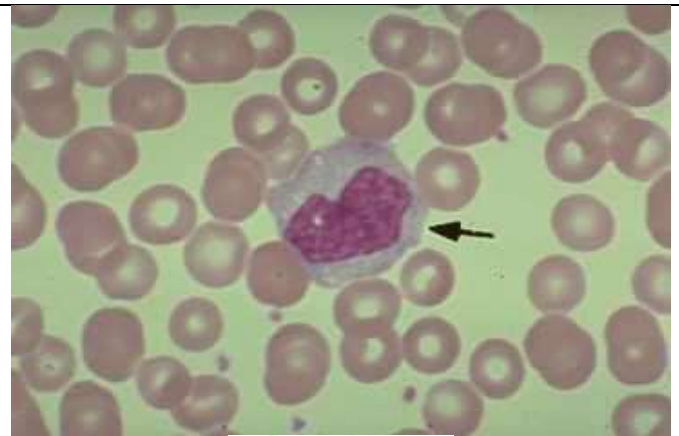
NEURÓFILOS



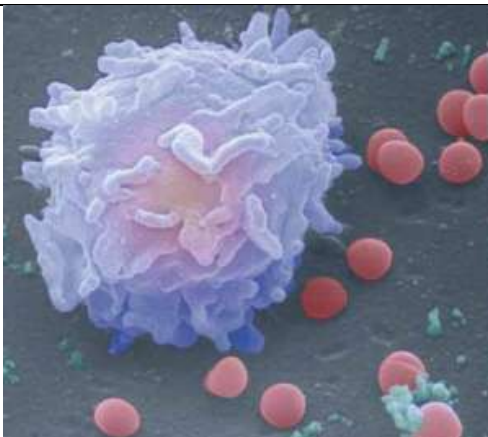
EOSINÓFILOS



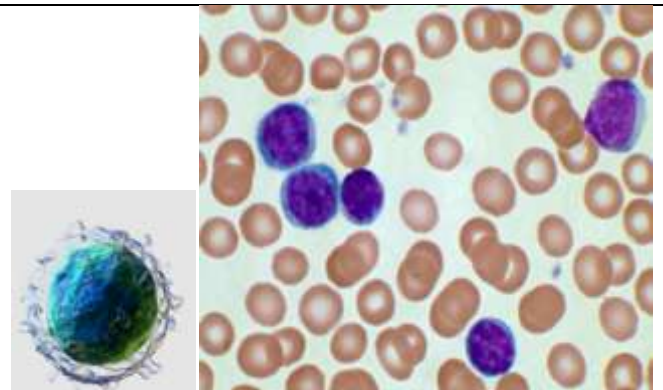
BASÓFILOS



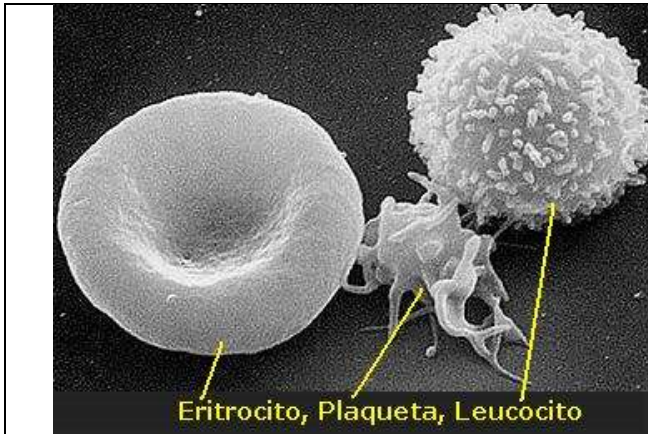
MONOCITOS



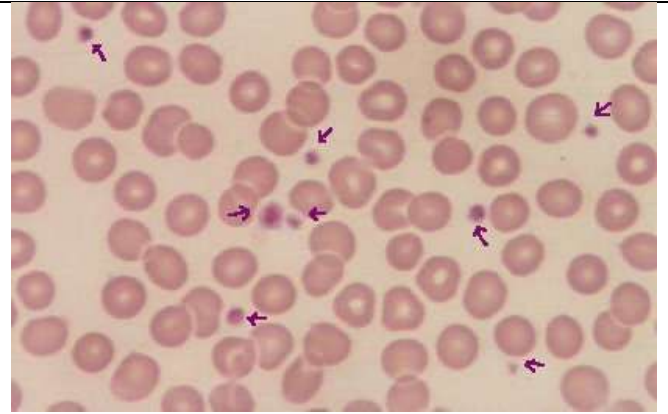
MACRÓFAGO



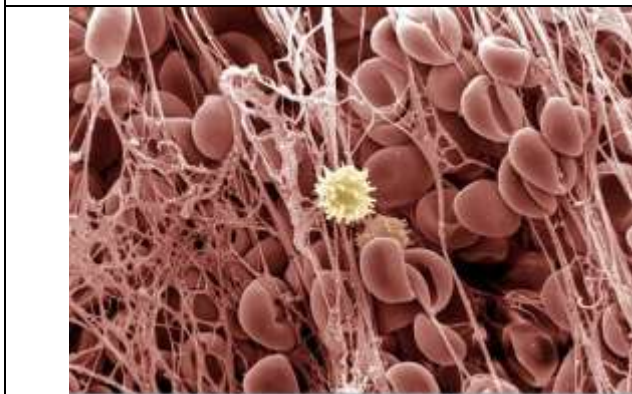
LINFCITOS



ELEMENTOS CELULARES DO SANGUE



PLAQUETAS



COÁGULO SANGUÍNEO

(Obsérvase a rede de fibrina coas plaqueta adheridas e os eritrocitos retidos. Tamén se ve un leucocito)



PLAQUETAS