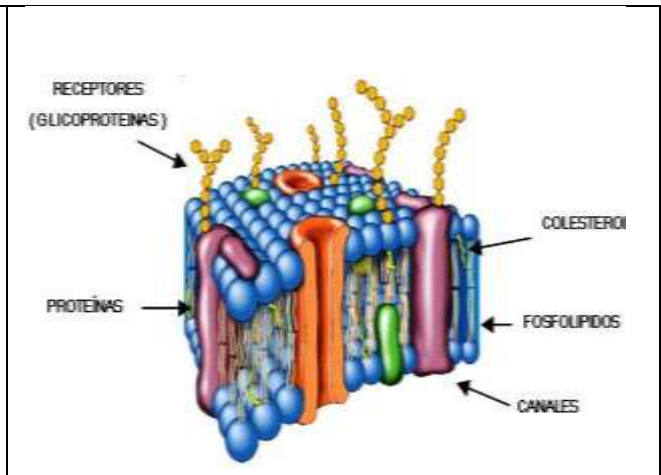
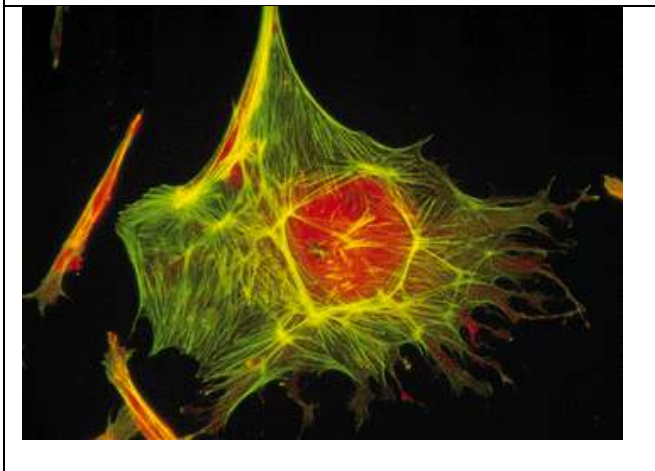


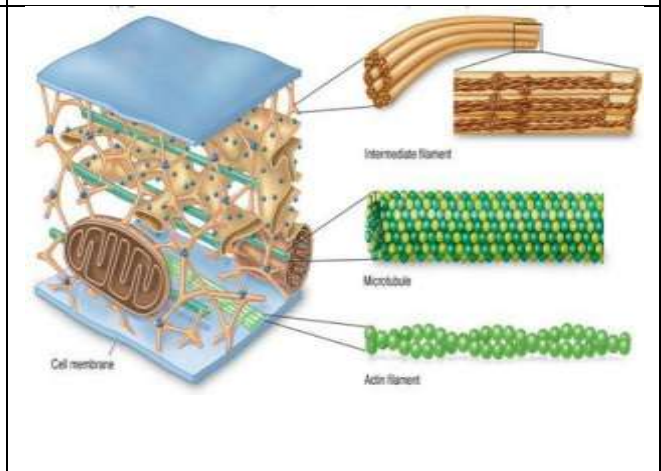
GLICOCÁLIX



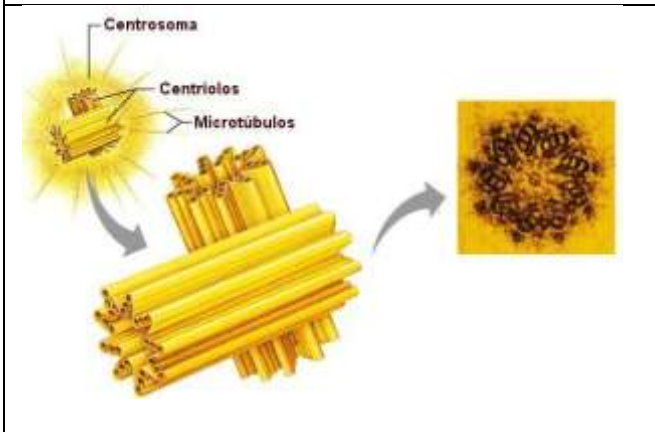
MEMBRANA PLASMÁTICA



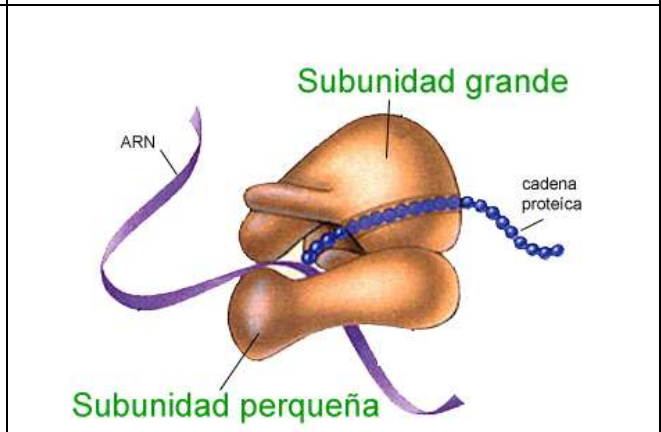
CITOESQUELETO



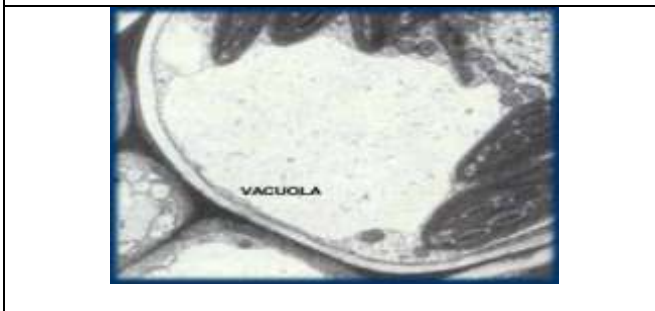
COMPONENTES DO CITOESQUELETO



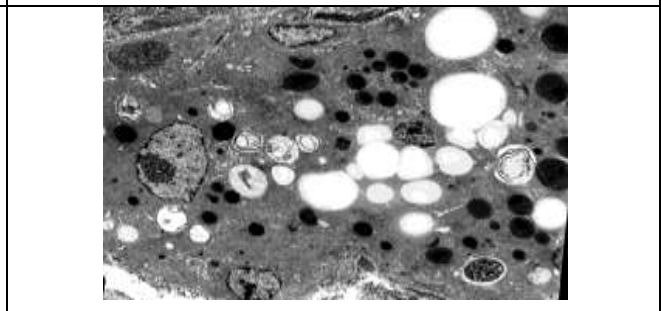
CENTROSOMA



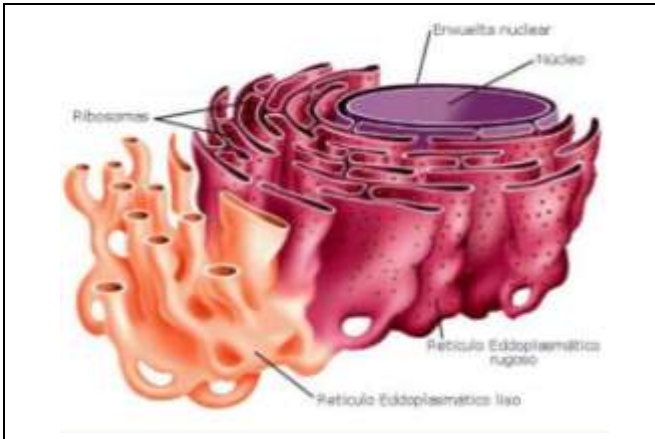
RIBOSOMAS



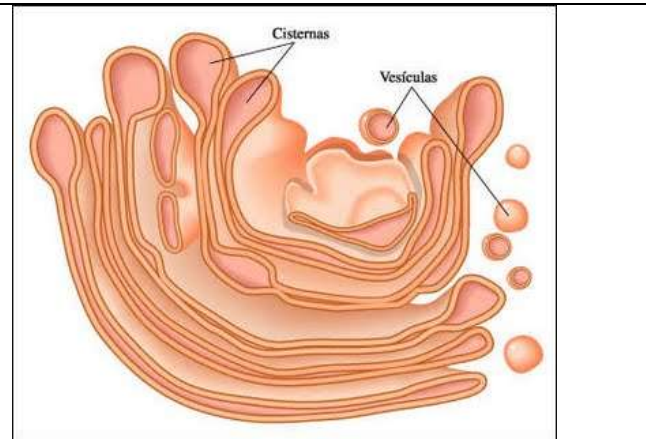
VACUOLA



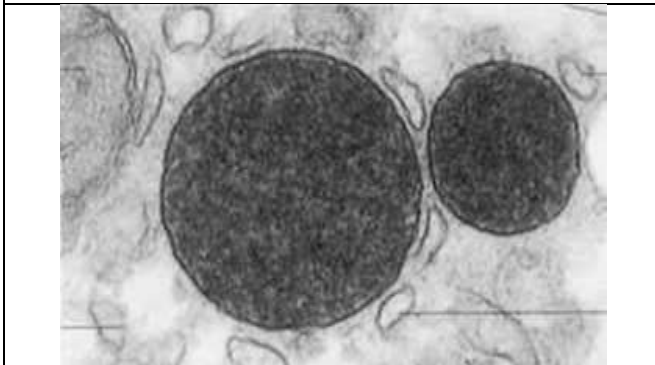
INCLUSIÓNS (Esferas brancas)



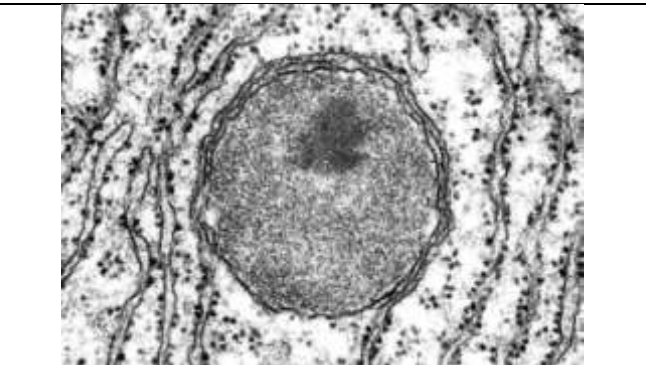
RETÍCULO ENDOPLASMÁTICO



APARATO DE GOLGI



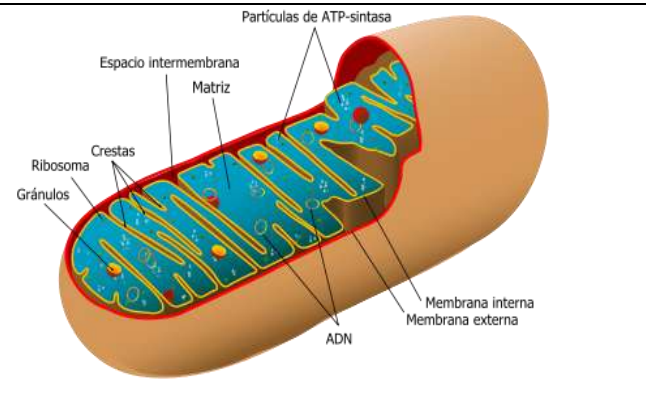
LISOSOMA



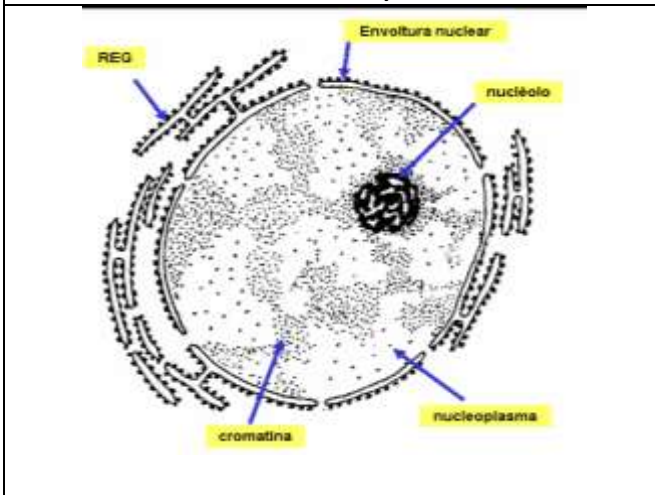
PEROXISOMA



MITOCONDRIA (tamén se ve parte do RER e lisosomas).



COMPOÑENTES DA MITOCONDRIA



ESTRUTURA DO NÚCLEO