



Mujeres en la ciencia

Laura Tenreiro Formoso
4 ESO
IES Mugardos



Índice

➤ Marie Curie

- Logros
 - Premio Nobel de Física y Química
 - Polonio

➤ Ada Lovelace

- Logros
 - Diagrama de Lovelace
 - Calculadora

➤ Mary Anderson

- Logros
 - Limpaparabrisas

➤ Ángela Ruíz Robles

- Logros
 - Libro electrónico

➤ Webgrafía



Marie Curie



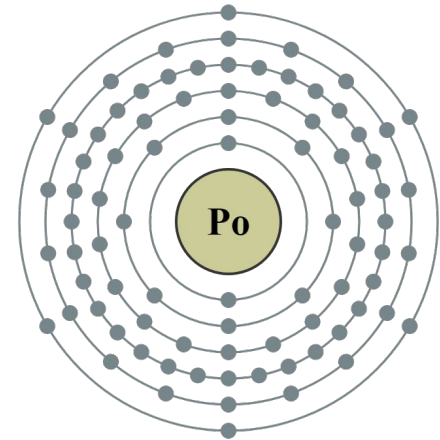
Logros



Premio Nobel de Física y Química

84: Polonio

2,8,18,32,18,6



Ada Lovelace



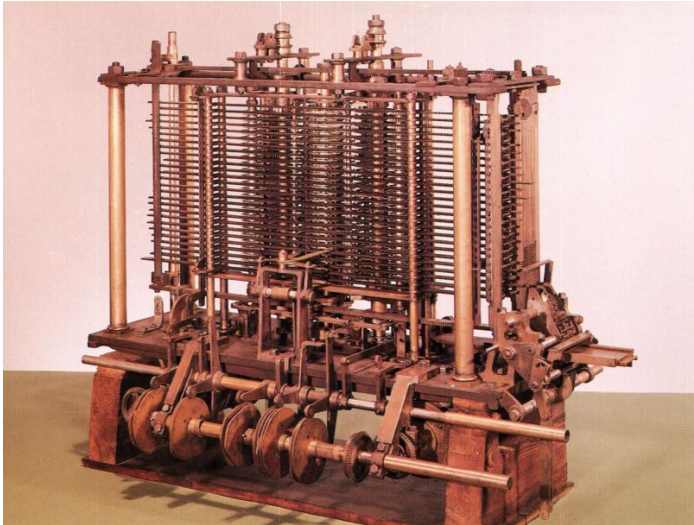


Logros

Diagram for the computation by the Engine of the Numbers of Bernoulli. See Note G. (page 729 of seq.)

Number of Operation.	Variables used and order.	Variables entering results.	Definition of change in the value of any Variable.	Statement of Results.	Data.												Working Variables.						Result Variables.											
					v_1	v_2	v_3	v_4	v_5	v_6	v_7	v_8	v_9	v_{10}	v_{11}	v_{12}	v_{13}	v_{14}	v_{15}	v_{16}	v_{17}	v_{18}	v_{19}	v_{20}										
1	$x, v_1, v_2, v_3, v_4, v_5, v_6$	$v_1, v_2, v_3, v_4, v_5, v_6$	$v_1 = v_2$	$2n - 2$	1
Here follows a repetition of Operations thence to twenty-three.																																		
24	$v_1, v_2, v_3, v_4, v_5, v_6$	$v_1, v_2, v_3, v_4, v_5, v_6$	$v_1 = v_2$	$4n - 4$	1

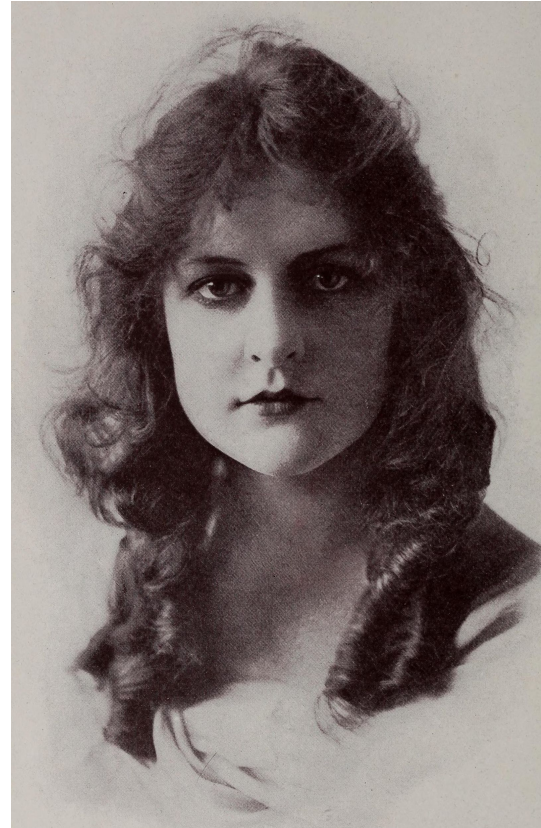
Diagrama de Lovelace



Máquina analítica



Mary Anderson





Logros

Limpiaparabrisas

No. 743,801.

PATENTED NOV. 10, 1903.

M. ANDERSON.
WINDOW CLEANING DEVICE.
APPLICATION FILED JUNE 18, 1903.

NO MODEL.

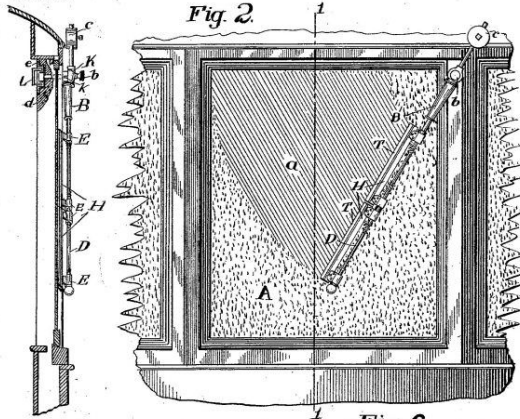


Fig. 1.

Fig. 6.

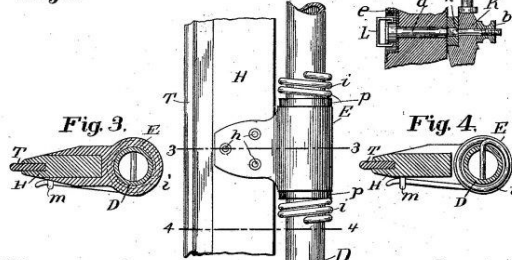


Fig. 3.

Fig. 4.

Fig. 5.

Witnesses
Milton Lenoir

Walter T. Estabrook

Inventor
Mary Anderson

By *[Signature]*
Attorney



Ángela Ruíz Robles





Logros

Primer libro electrónico





Webgrafía

- ❖ <https://astrojem.com/mujeres/mariecurie.html>
- ❖ <https://www.quien.net/robles.php>
- ❖ <https://www.lavanguardia.com/historiayvida/historia-contemporanea/20190627/47312240871/ada-lovelace-la-primera-programadora.html>
- ❖ <https://mujeresquehacenlahistoria.blogspot.com/2008/09/siglo-xix-mary-anderson.html>
- ❖ <http://biografias.wiki/mary-anderson/>

FIN