



SILABA INICIAL 2

MÁS FONOAUDILOGÍA

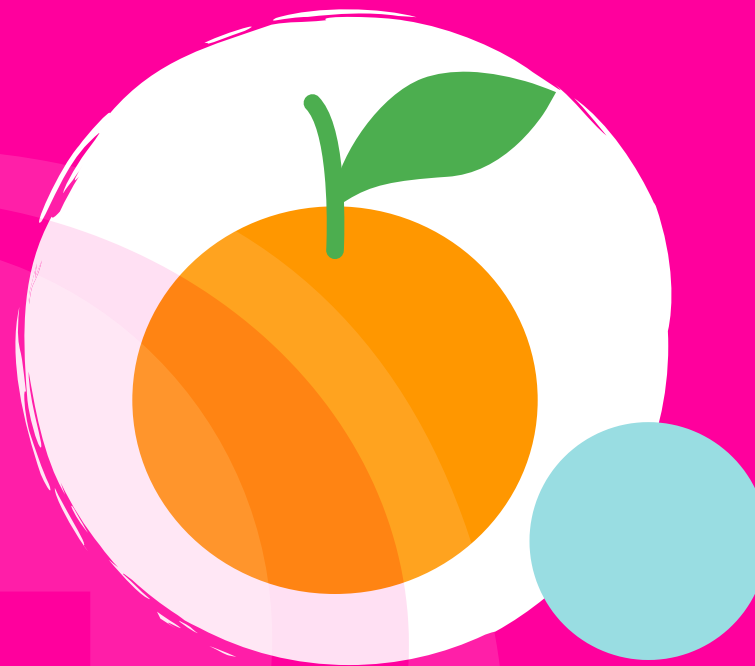
© Flgo. Javier Riquelme González

WWW.MASFONOAUDIOLOGIA.COM

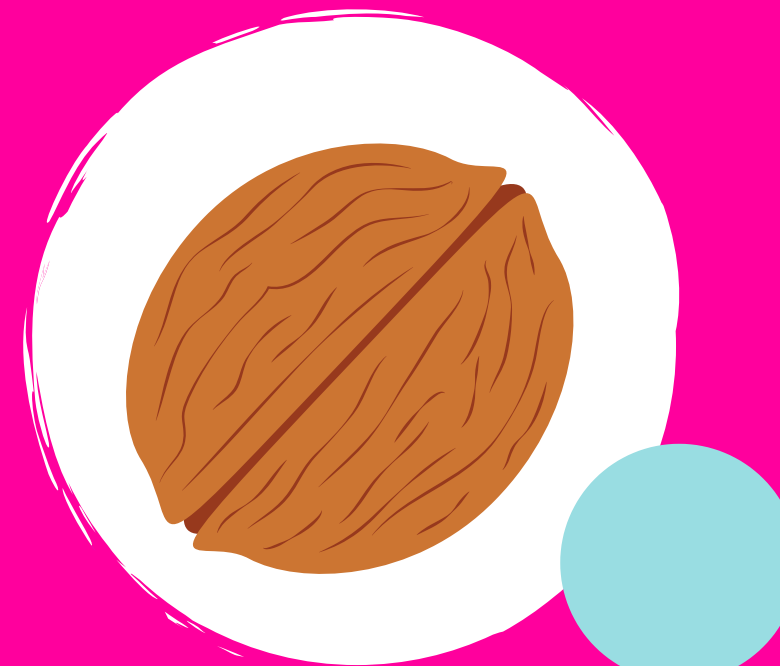
Más Fonoaudiología

NANA

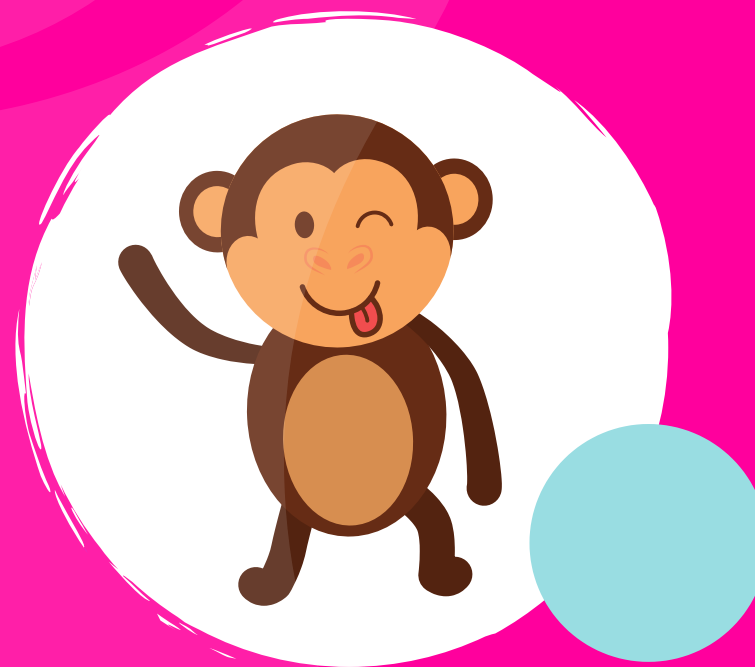
*Qué palabra
inicia con...*



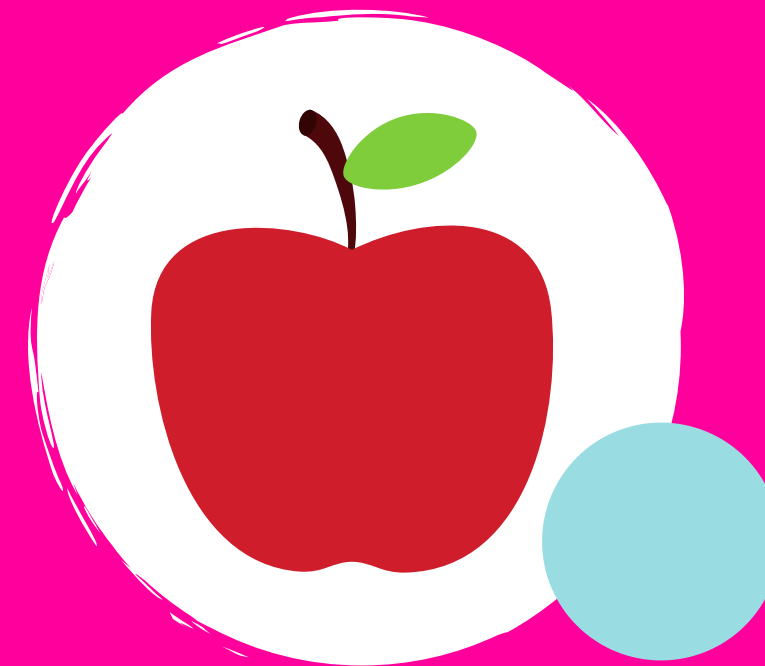
Naranja



Nuez



Mono

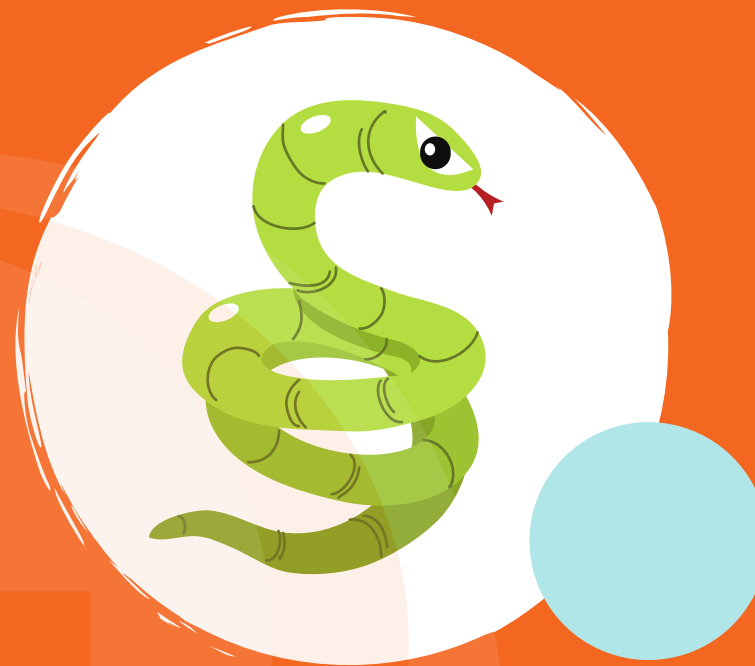


Manzana

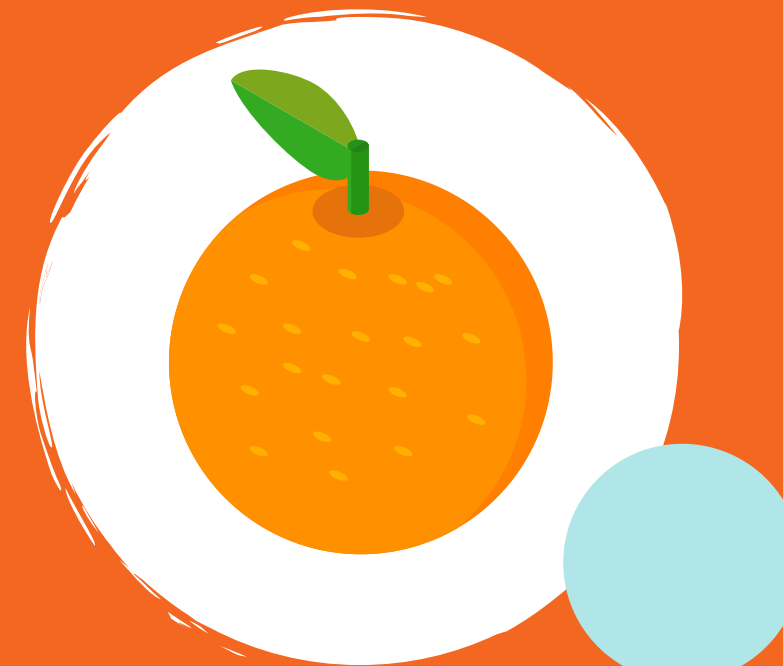
Más Fonoaudiología



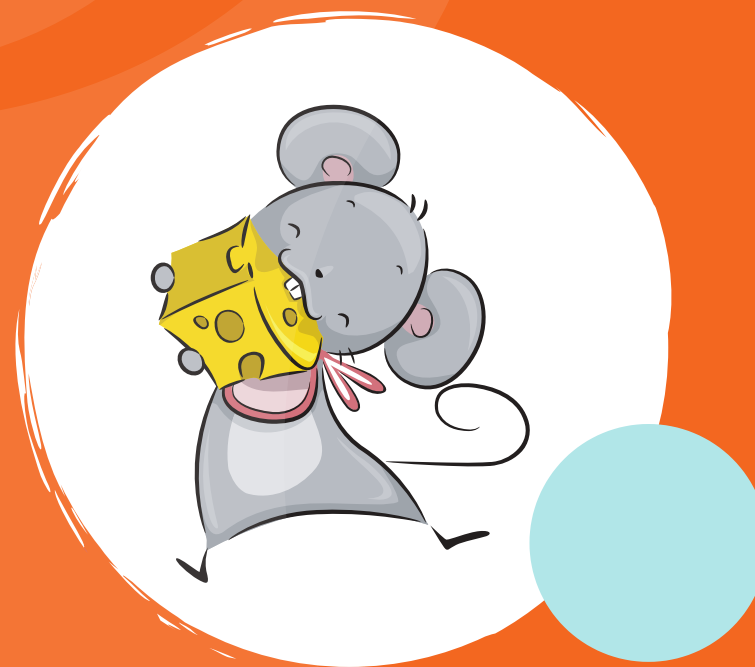
Qué palabra
inicia con...



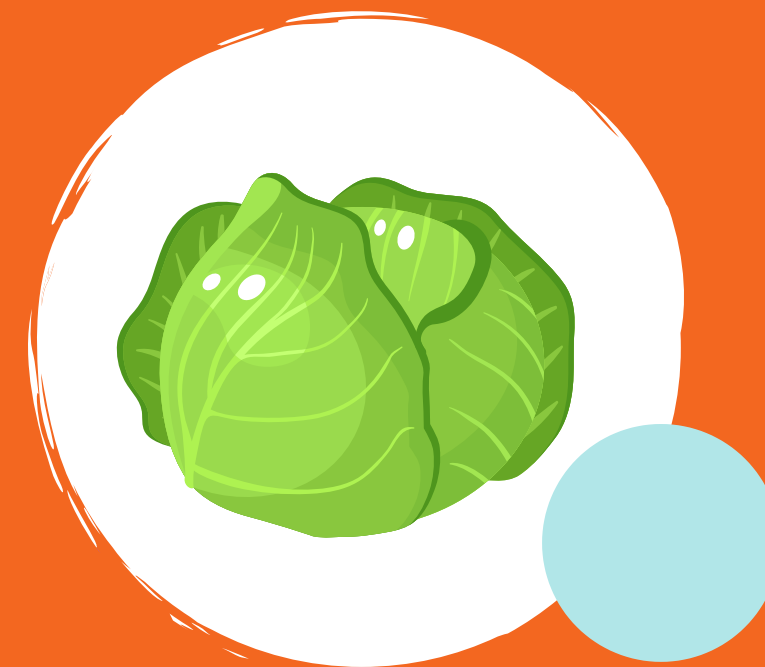
Serpiente



Naranja



Ratón

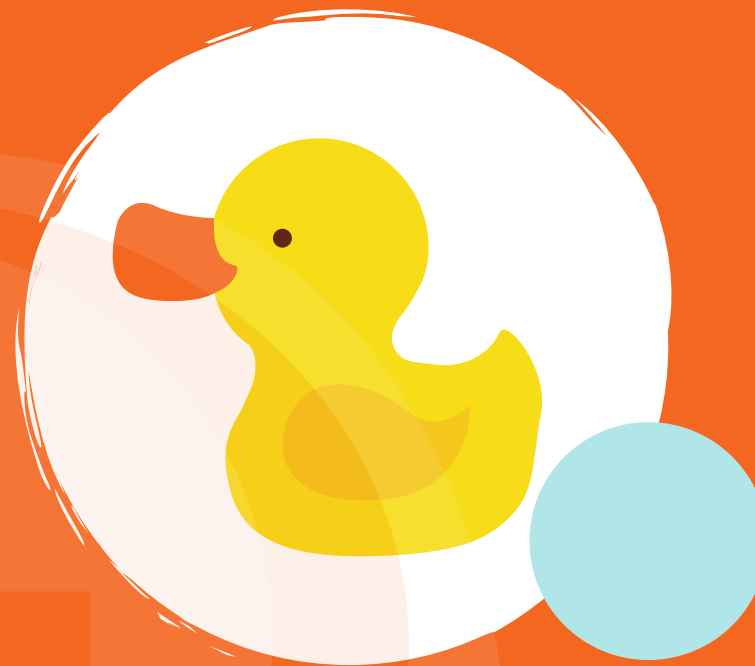


Repollo

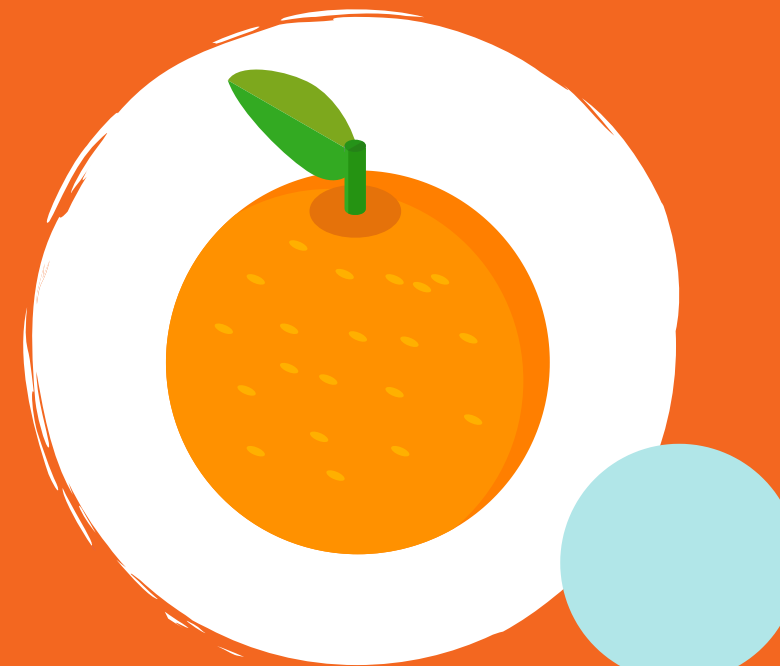
Más Fonoaudiología



Qué palabra
inicia con...



Pato



Naranja



Pelota

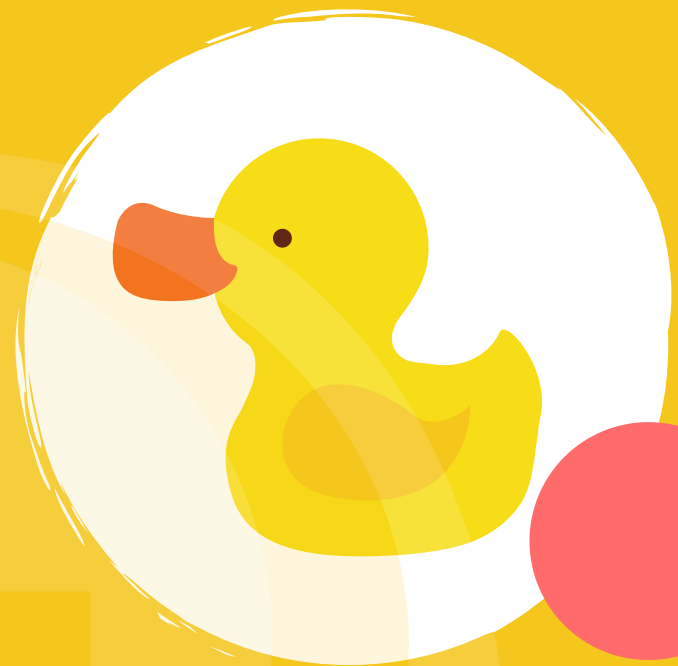


Leche

Más Fonoaudiología



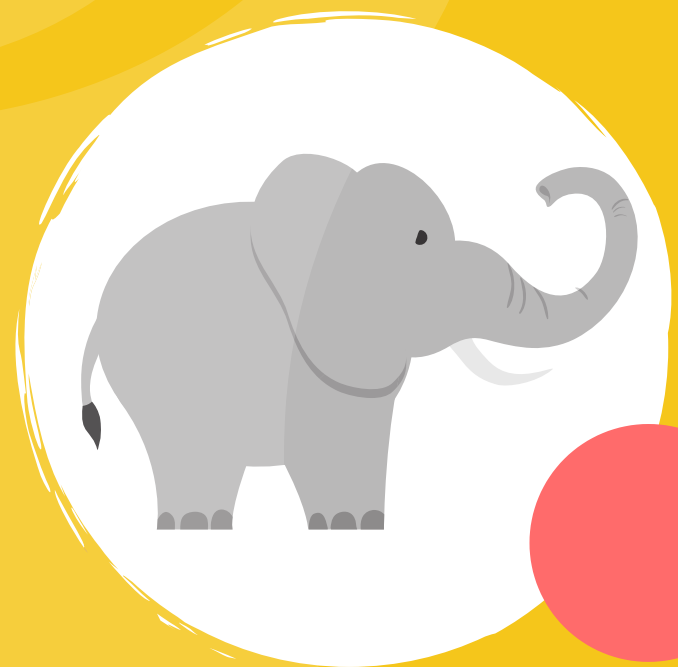
Qué palabra
inicia con...



Pato



Perro



Elefante

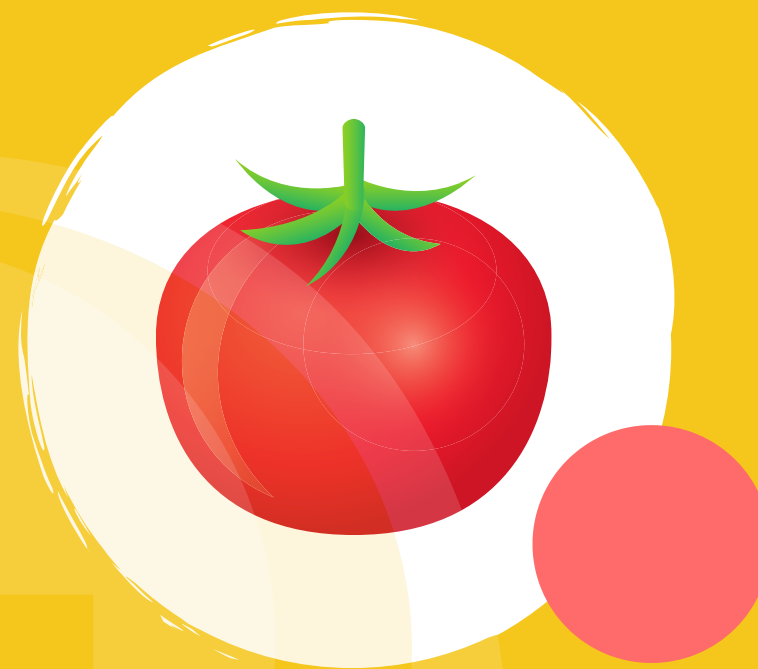


Pollo

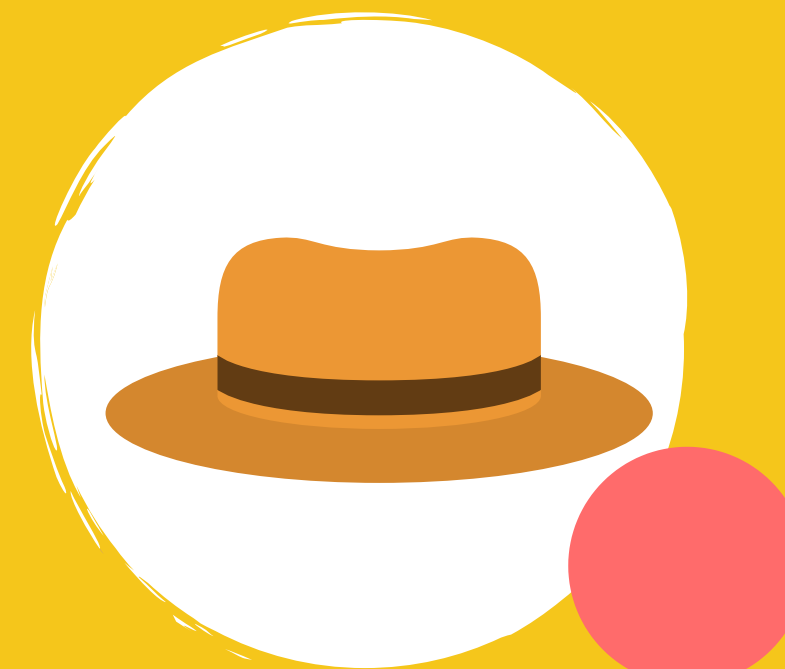
Más Fonoaudiología



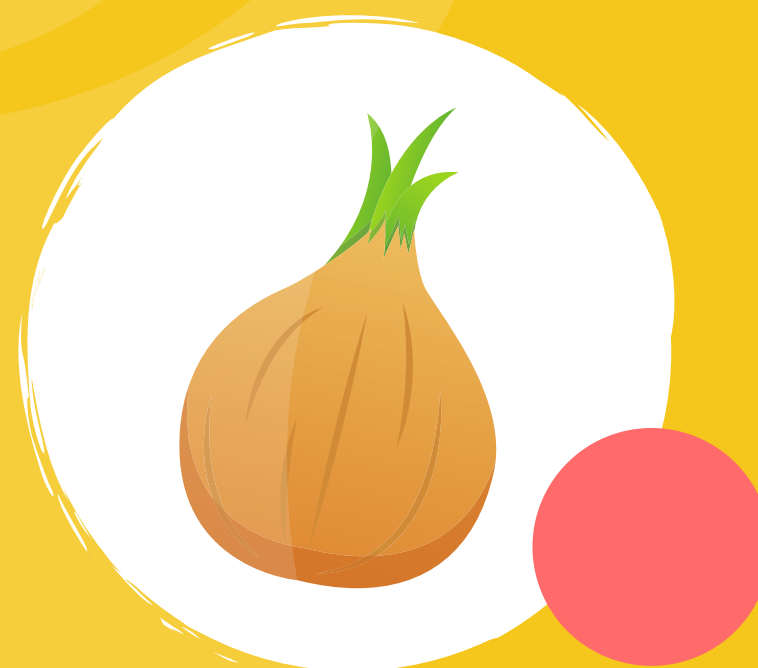
Qué palabra
inicia con...



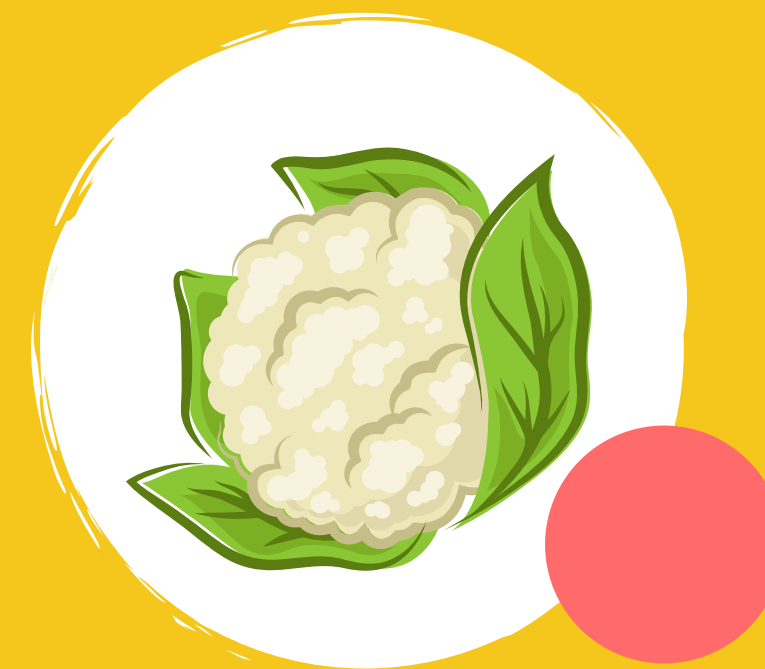
Tomate



Sombrero



Cebolla



Coliflor

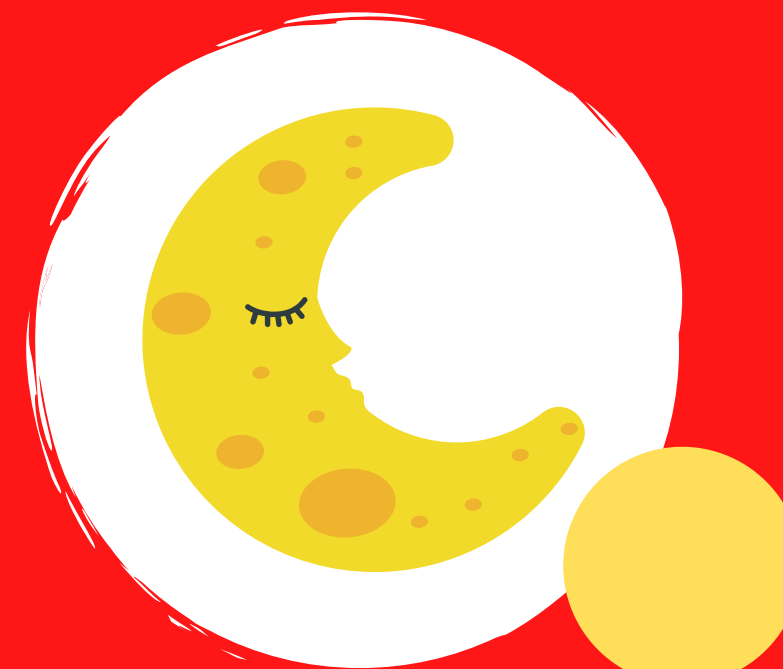
Más Fonoaudiología



Qué palabra
inicia con...



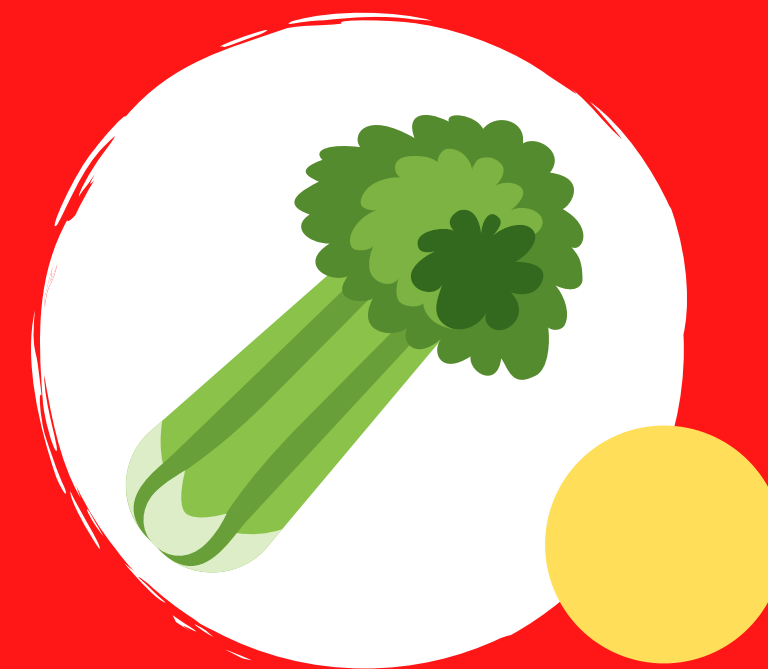
Gota



Luna



Limón

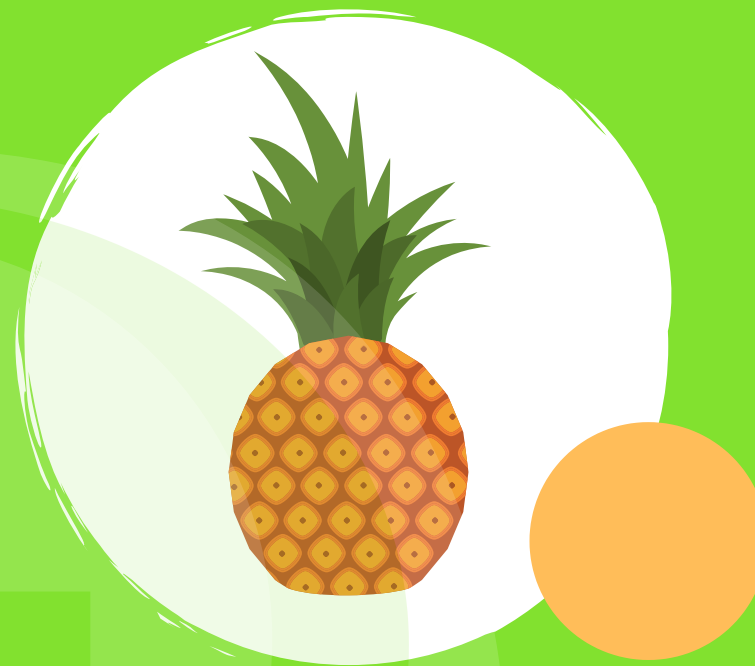


Apio

Más Fonoaudiología



Qué palabra
inicia con...



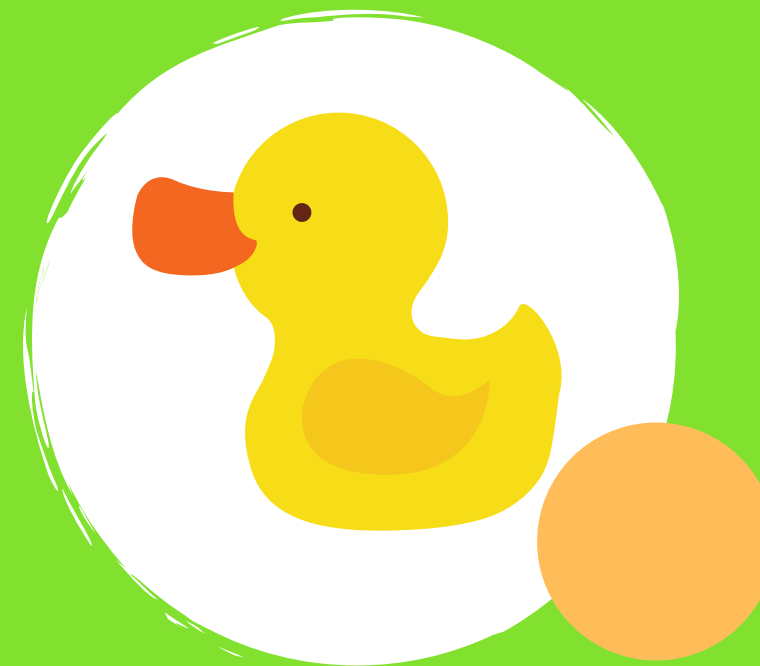
Piña



Gato



Gota



Manzana

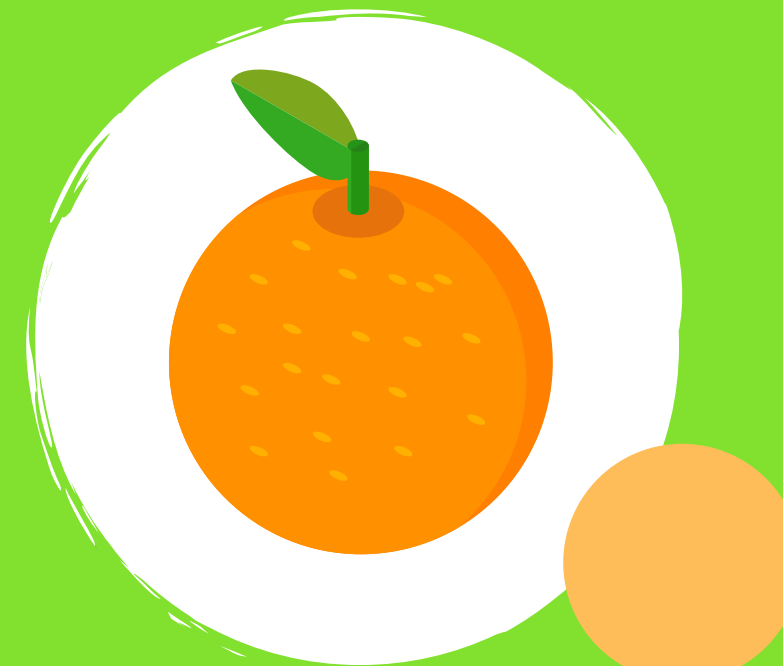
Más Fonoaudiología



Qué palabra
inicia con...



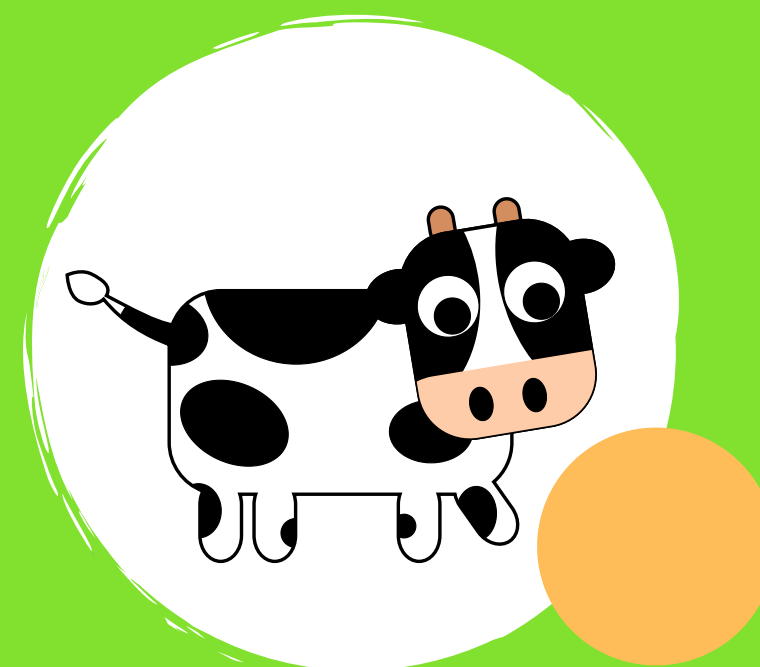
Tetera



Naranja



Taladro

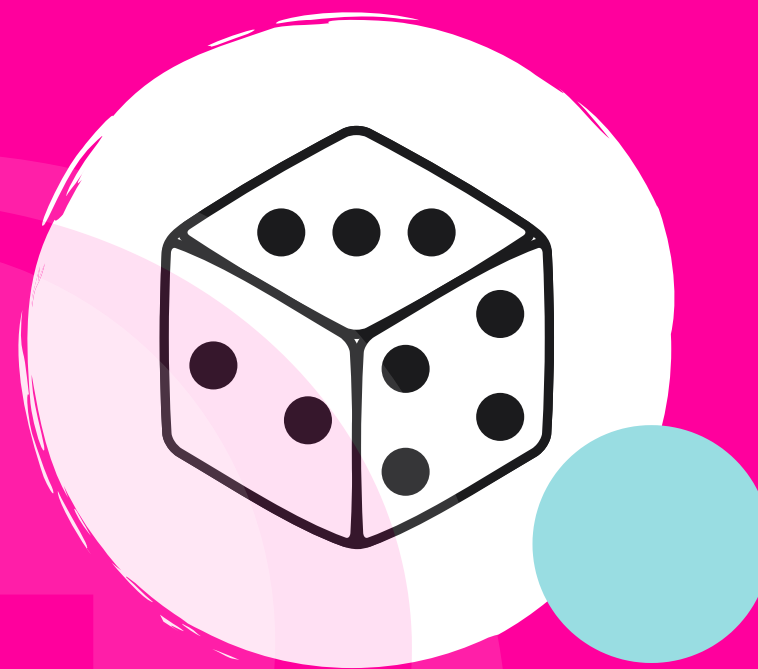


Vaca

Más Fonoaudiología



Qué palabra
inicia con...



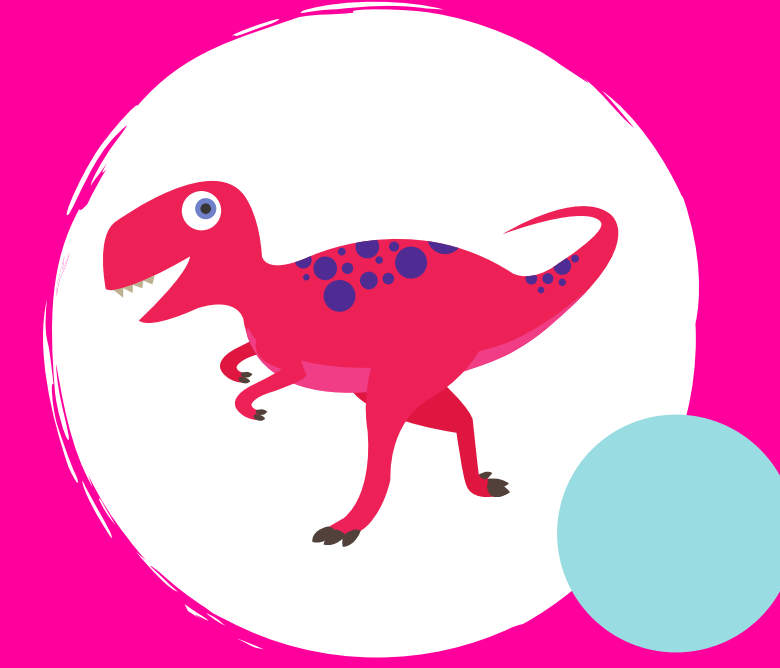
Dado



Mono



Árbol

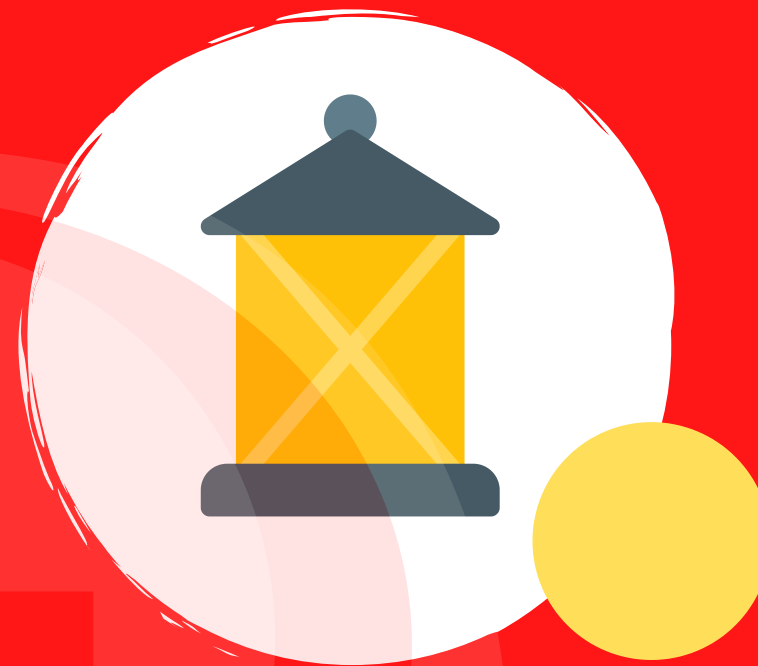


Dinosaurio

Más Fonoaudiología



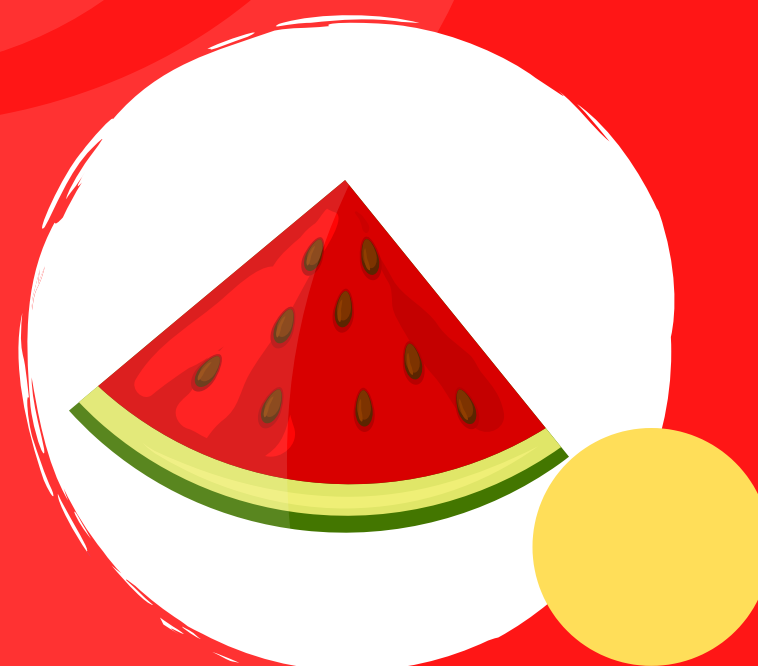
Qué palabra
inicia con...



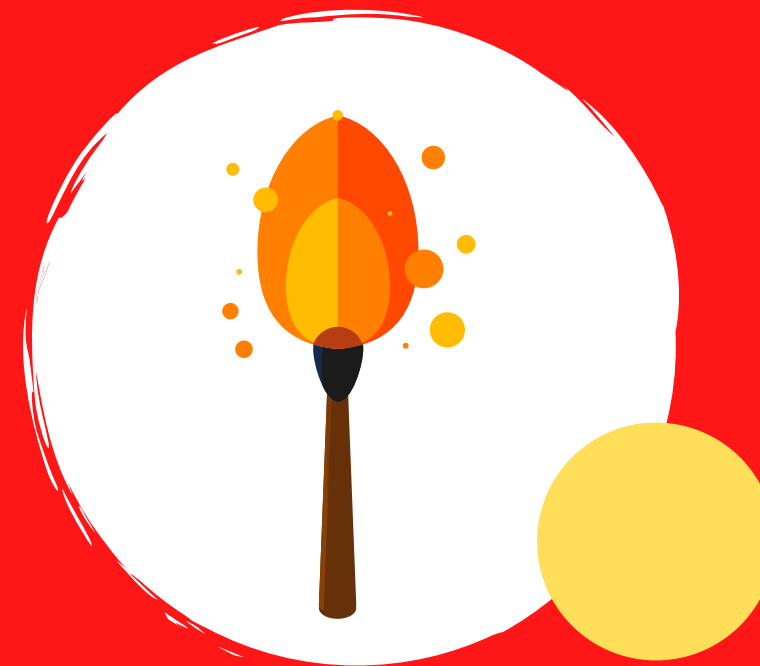
Farol



Mono

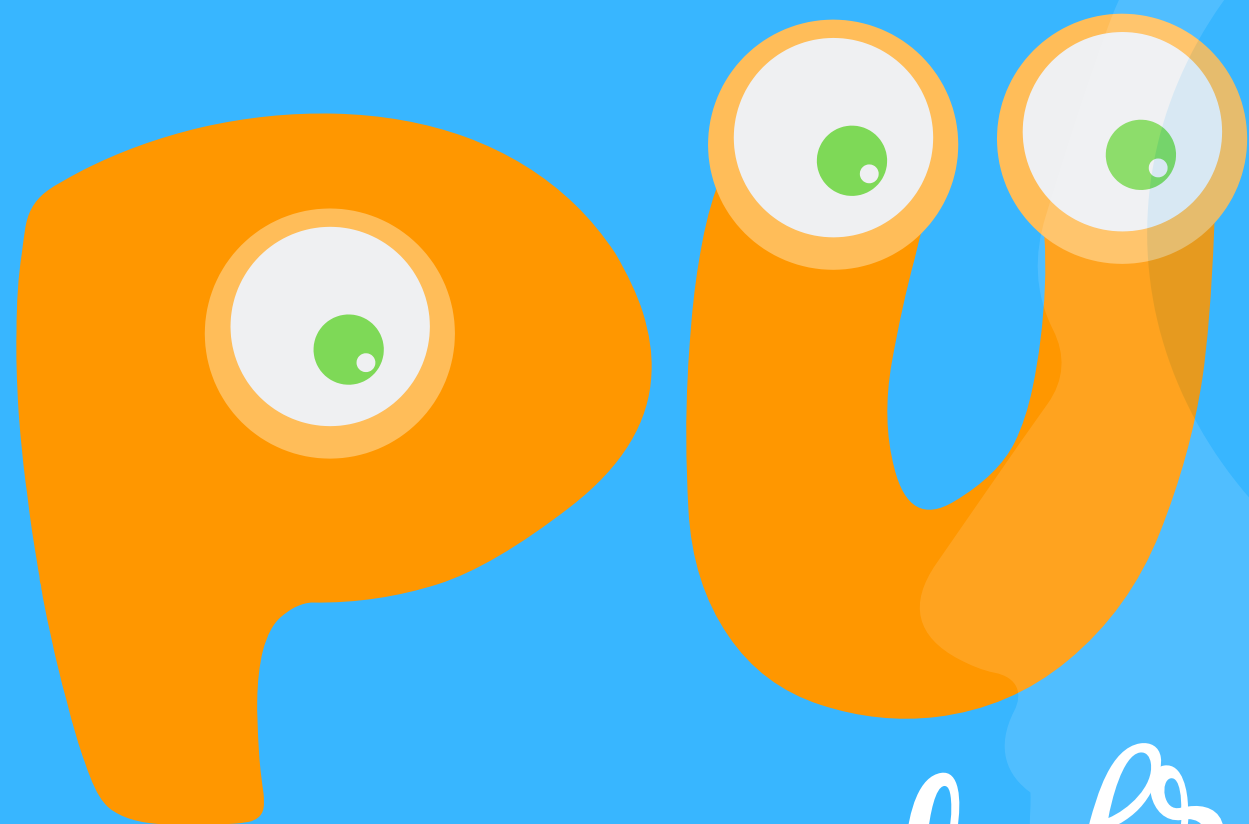


Sandía

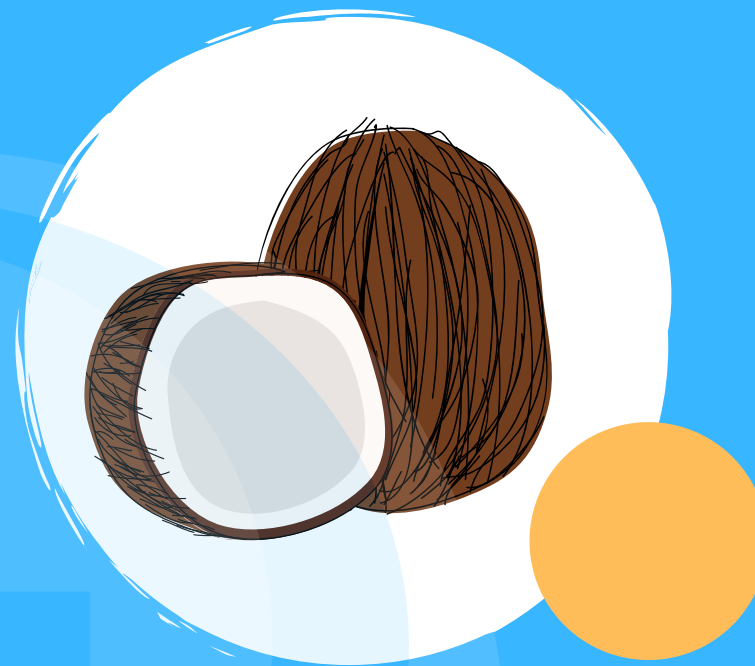


Fósforo

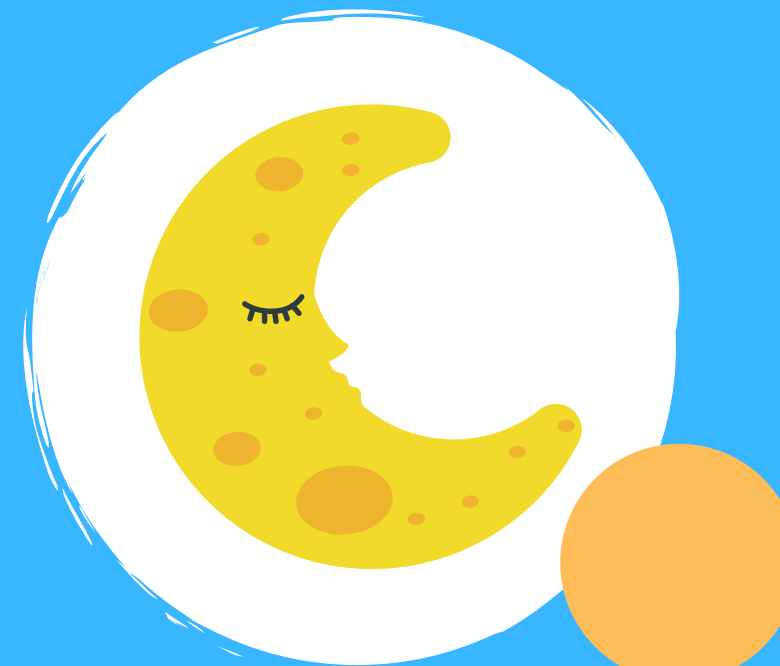
Más Fonoaudiología



Qué palabra
inicia con...



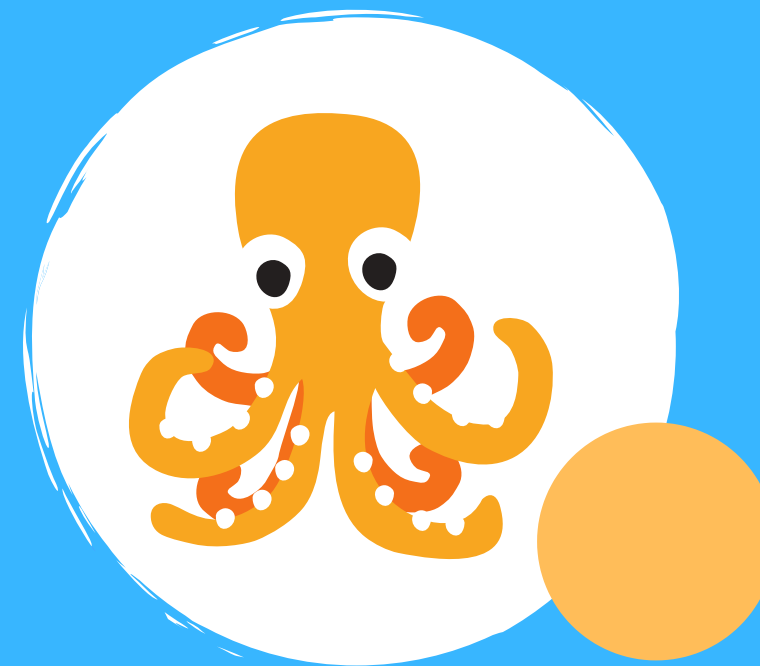
Coco



Luna

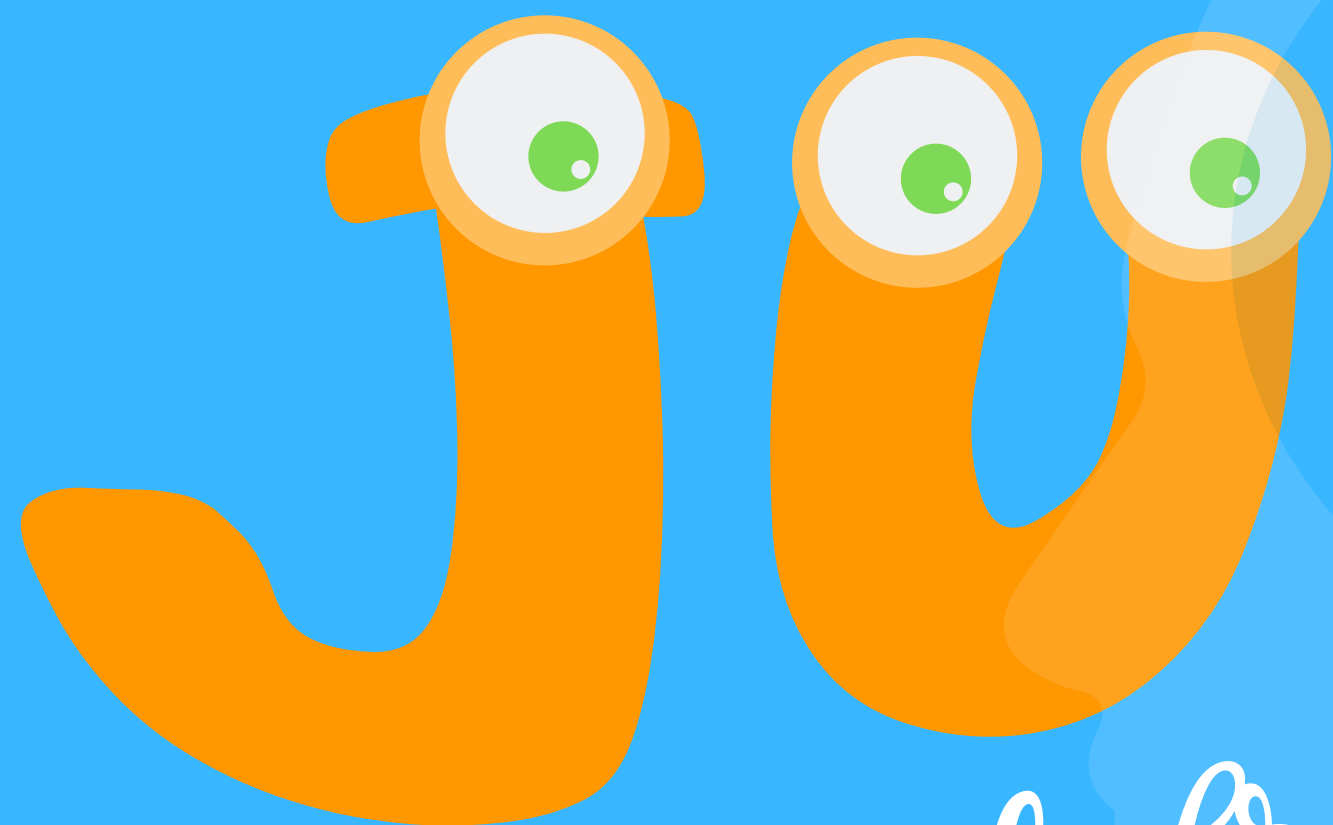


Payaso



Pulpo

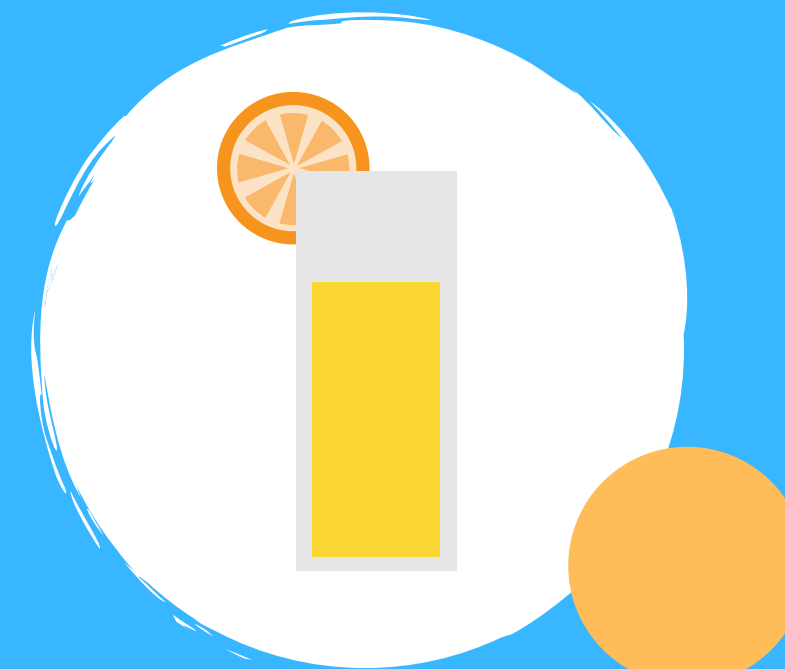
Más Fonoaudiología



Qué palabra
inicia con...



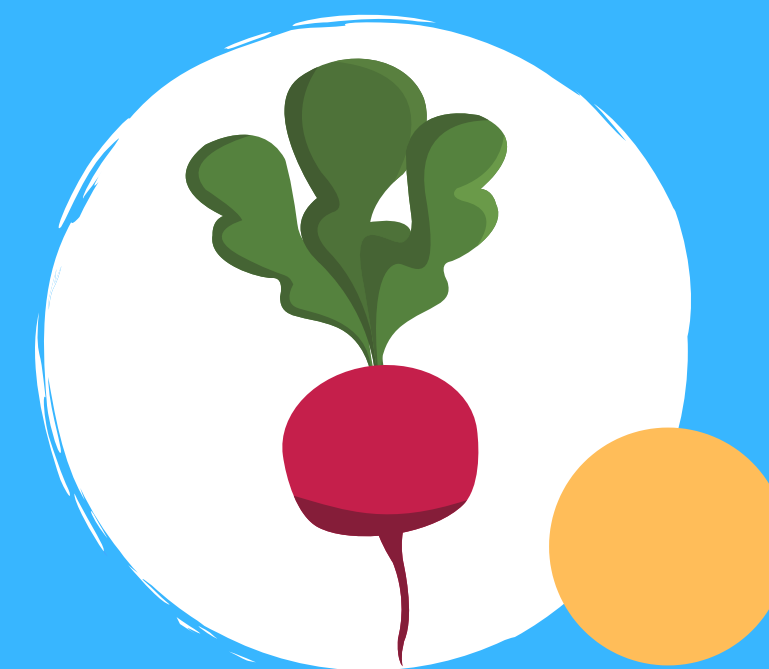
Lechuga



Jugo



Jarrón



Betarraga