

PROPOSTAS DE

RECOMENDACIONES  
LECTORAS

DA BIBLIOTECA DO CEIP PLURILINGÜE VILA DE RUTIS



# MOMENTOS PARA LER

Prelectores

---

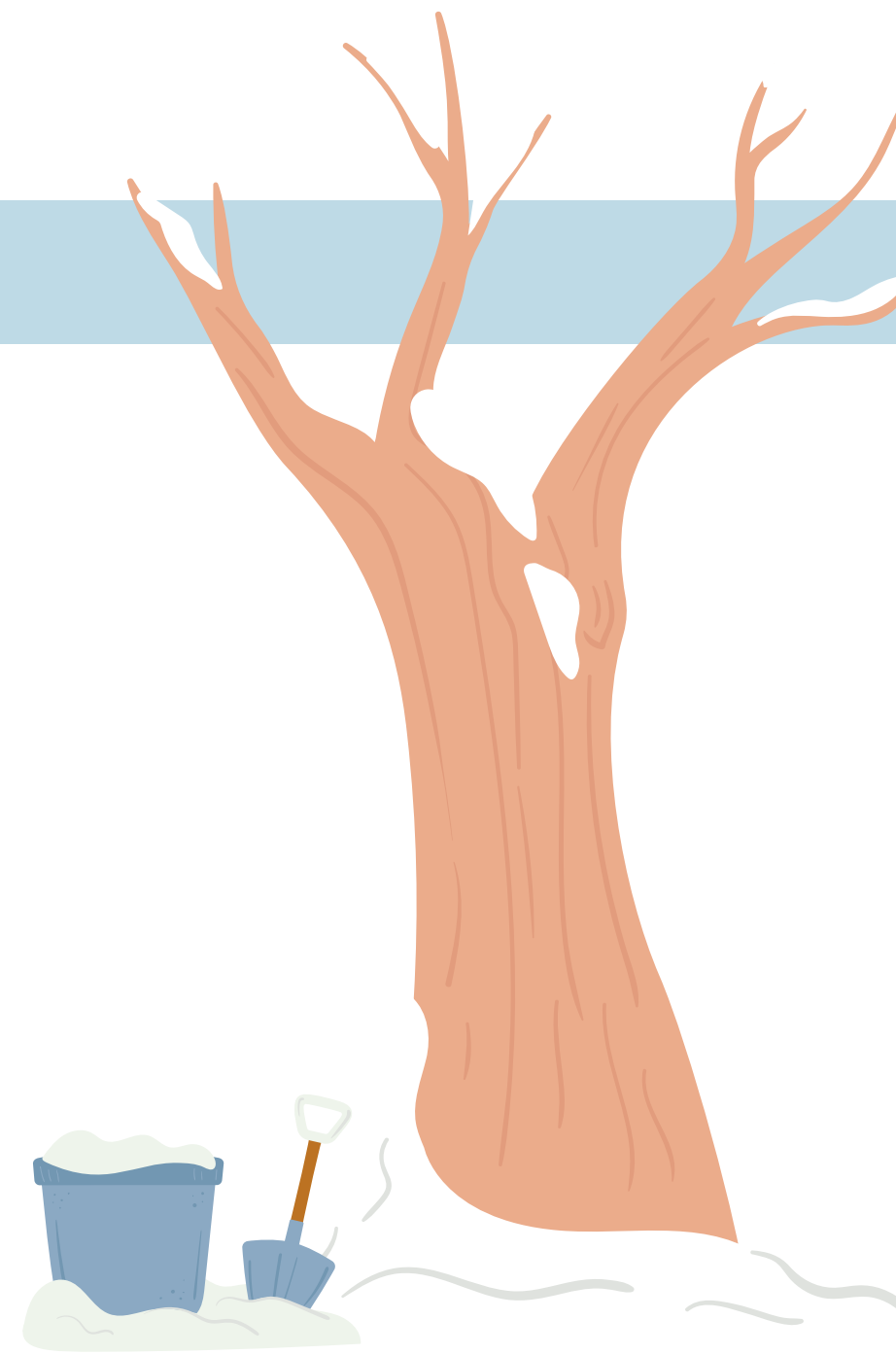
Primeiros leitores

---

Lectores autónomos

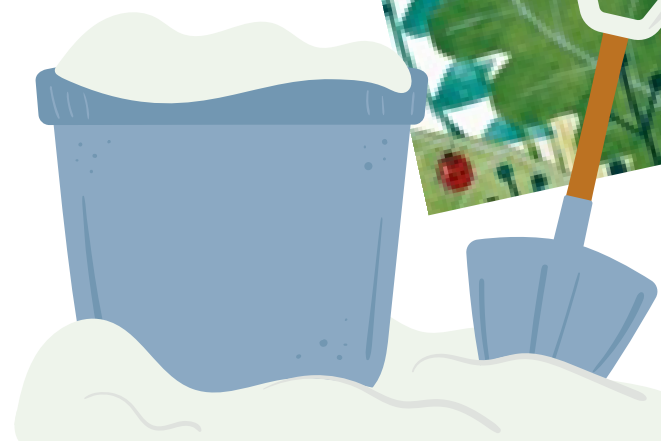
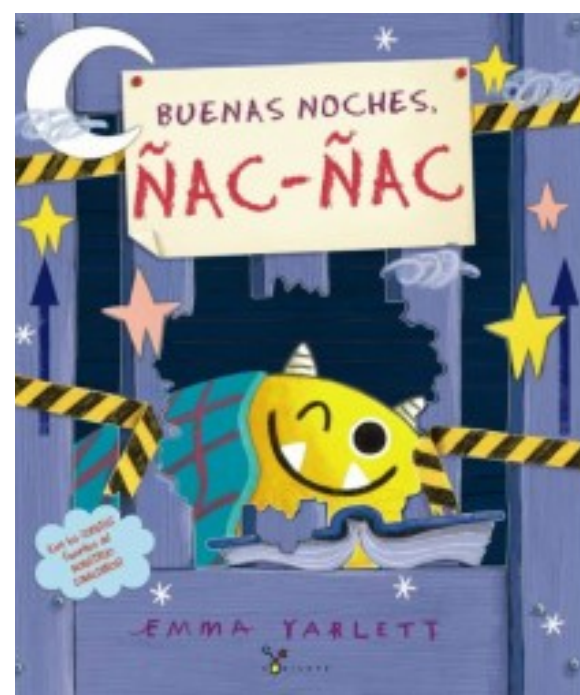
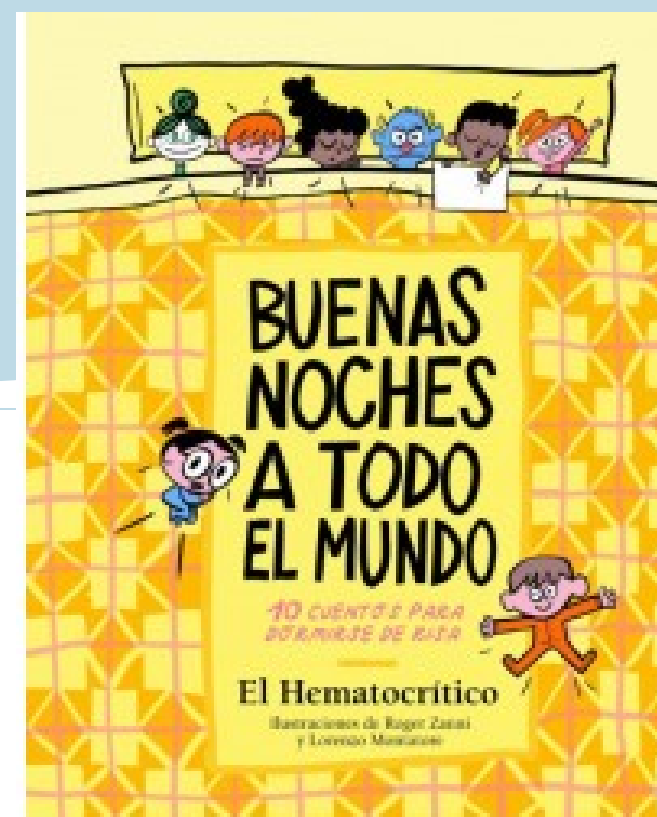
---

Lectores expertos



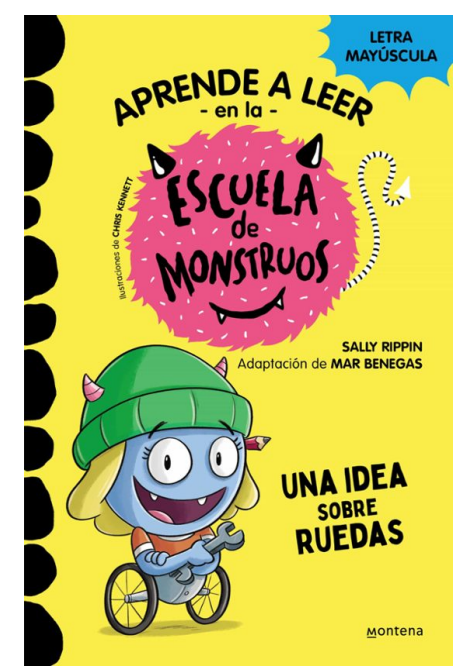
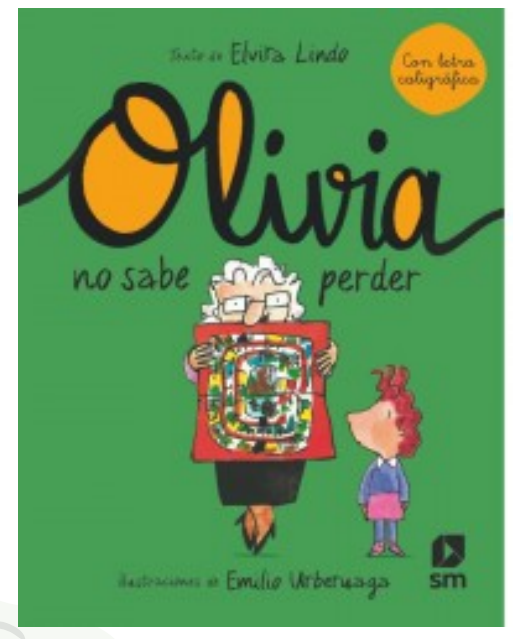
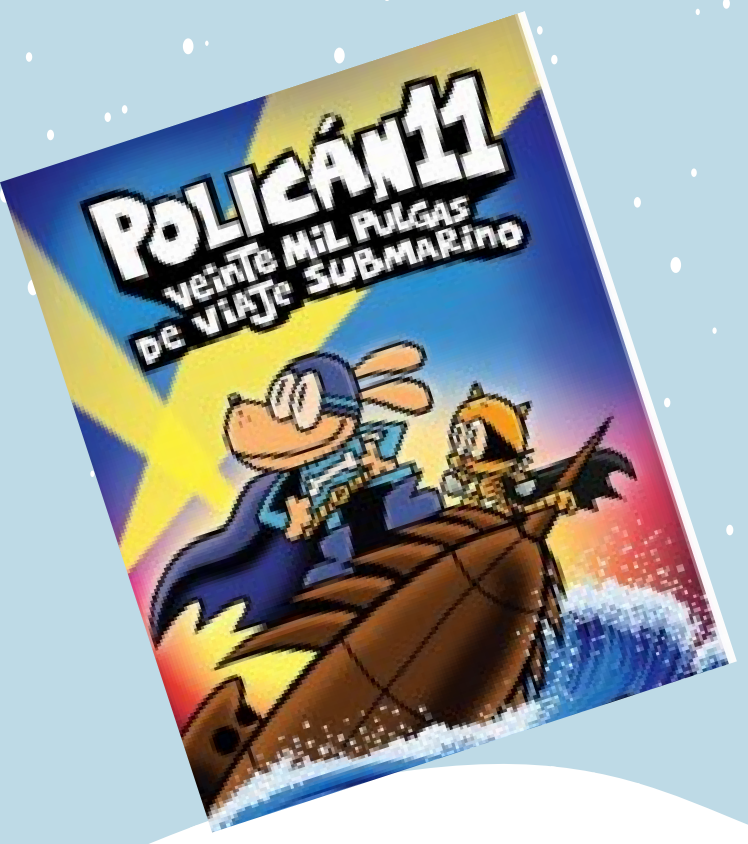


# PRELECTORES





# PRIMEIROS LECTORES



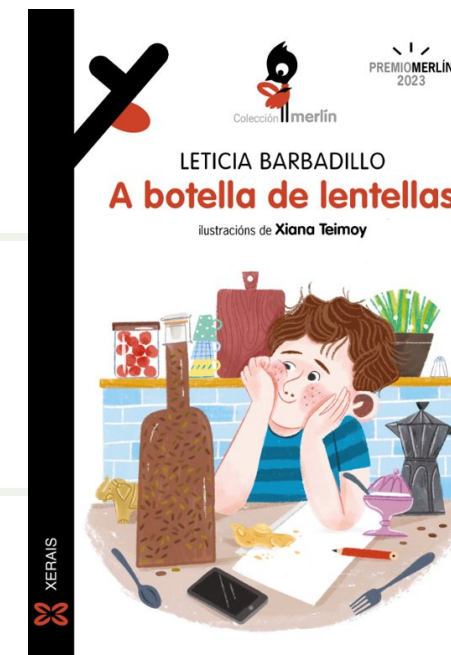
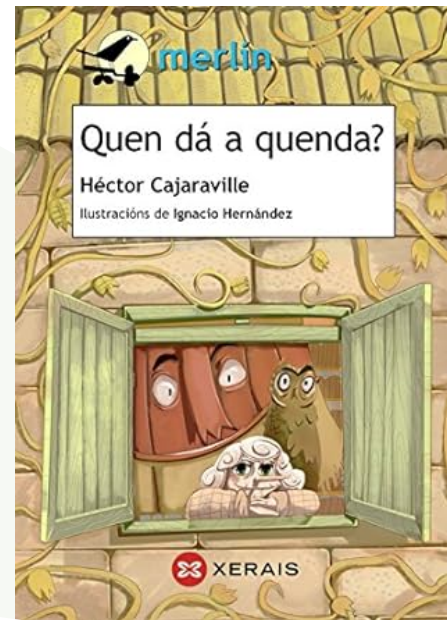
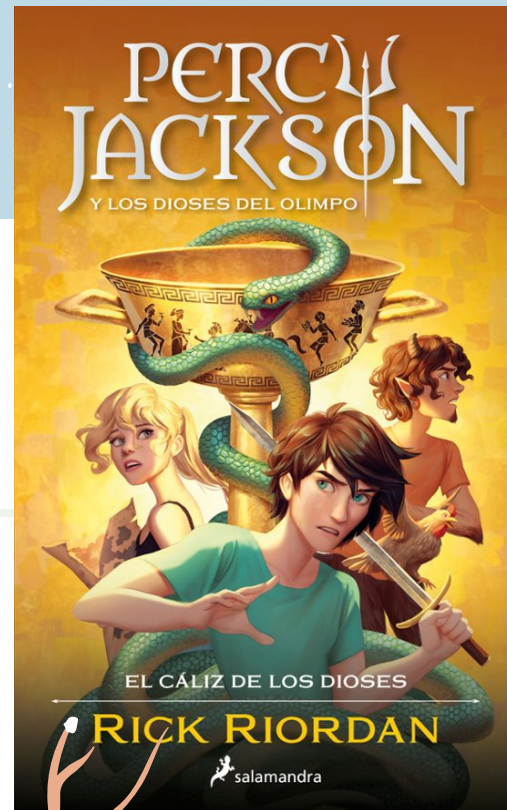


# LECTORES AUTÓNOMOS



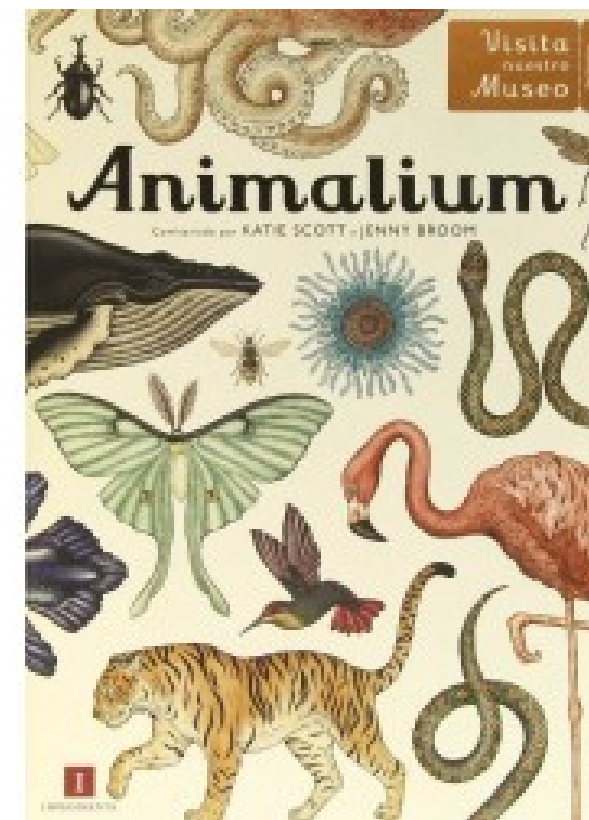
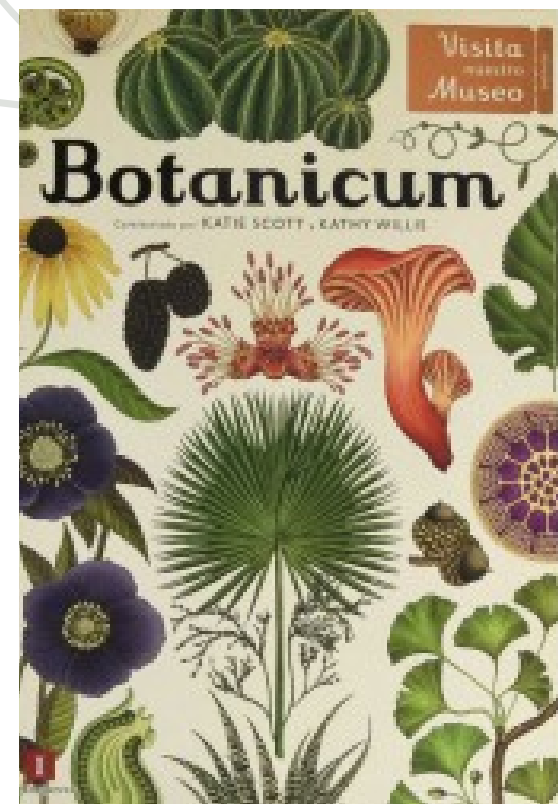


# LECTORES EXPERTOS





# INVESTIGACIONES





UN NENO QUE LÉ SERÁ UN  
ADULTO QUE PENSE

BO NADAL

