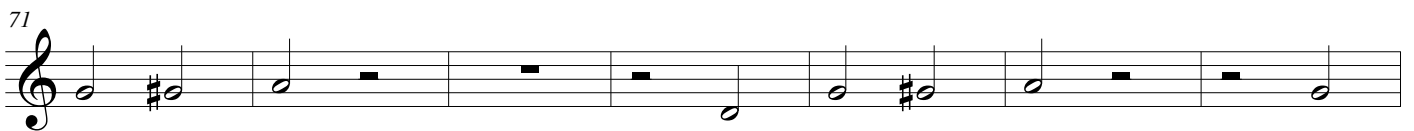
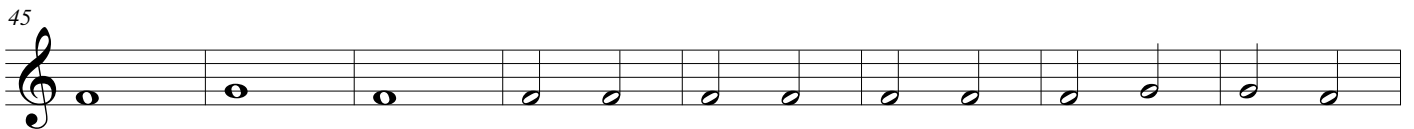
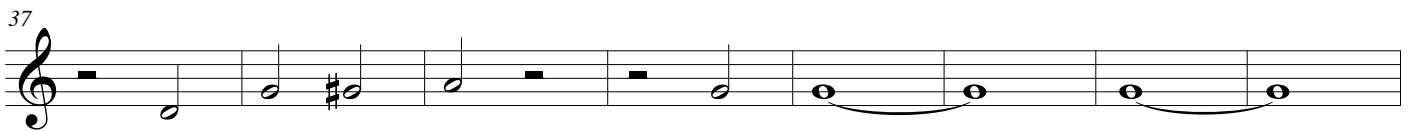
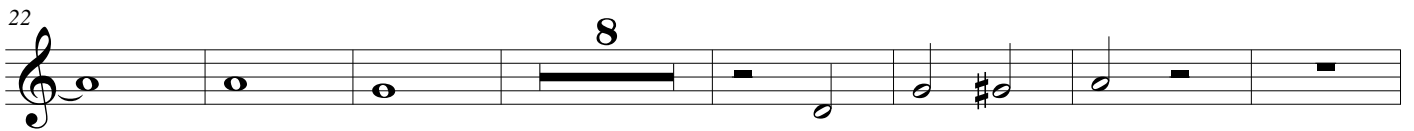
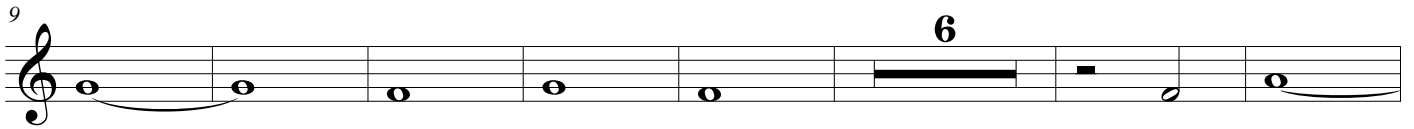
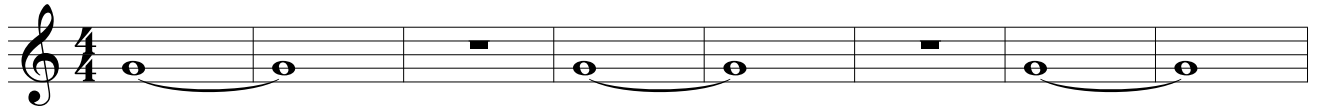


# Alegoría

Juan Carlos Martínez Fontana

Frauta 4



90

Musical staff with treble clef, starting at measure 90. The staff contains a sequence of notes: a quarter note G4, followed by six groups of eighth notes (G4, A4, B4, A4, G4) beamed together. Each group is preceded by a quarter note G4. The sequence ends with a quarter note G4.

96

Musical staff with treble clef, starting at measure 96. The staff contains a single quarter note G4 followed by a double bar line.