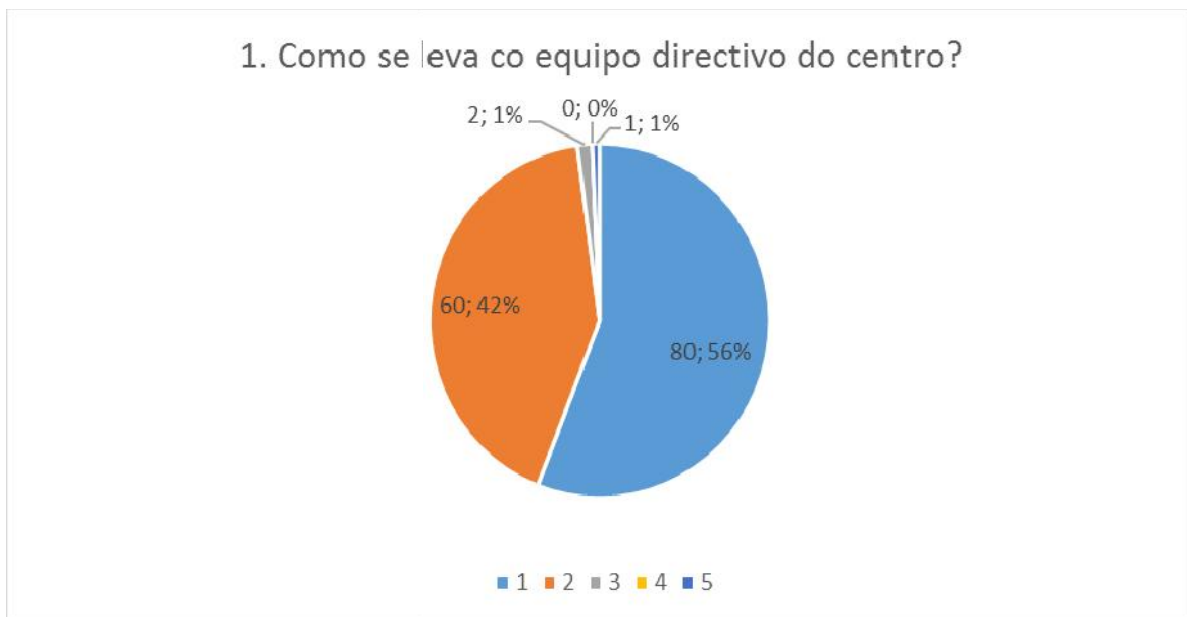
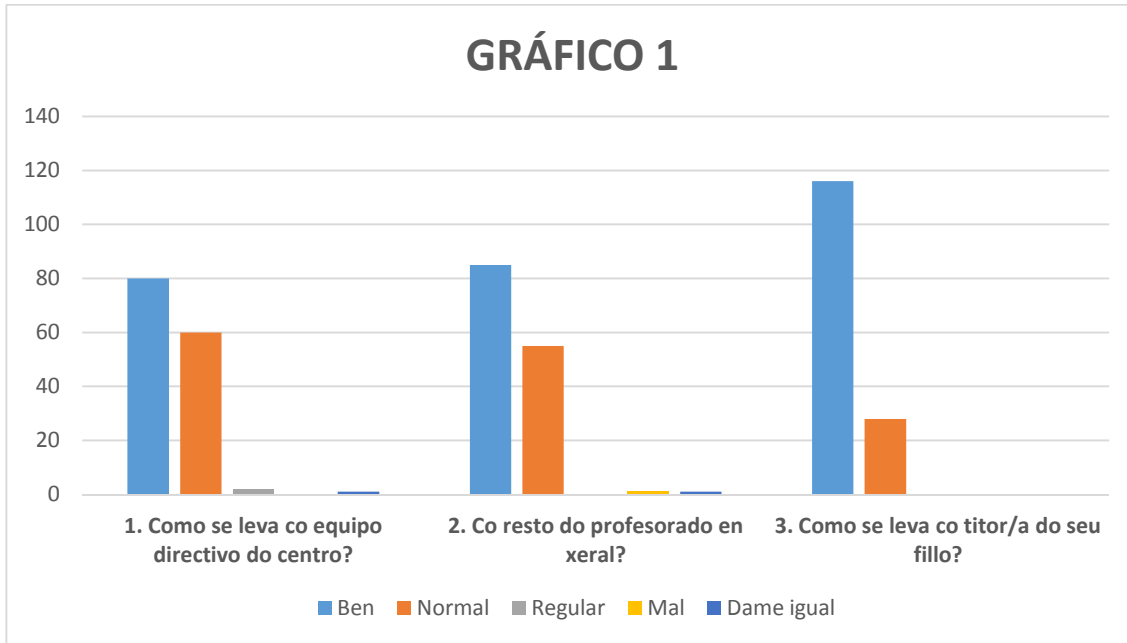
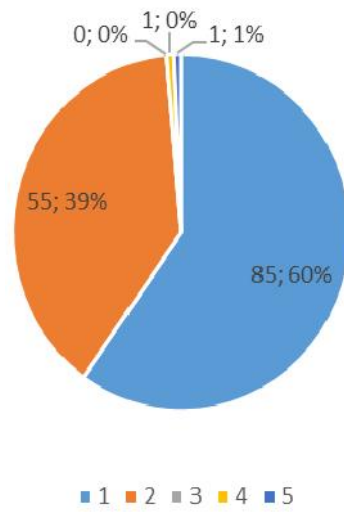


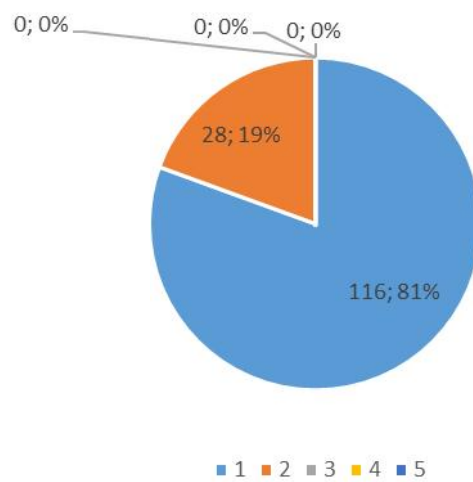
## GRÁFICA ENQUI SA FAMILIAS:

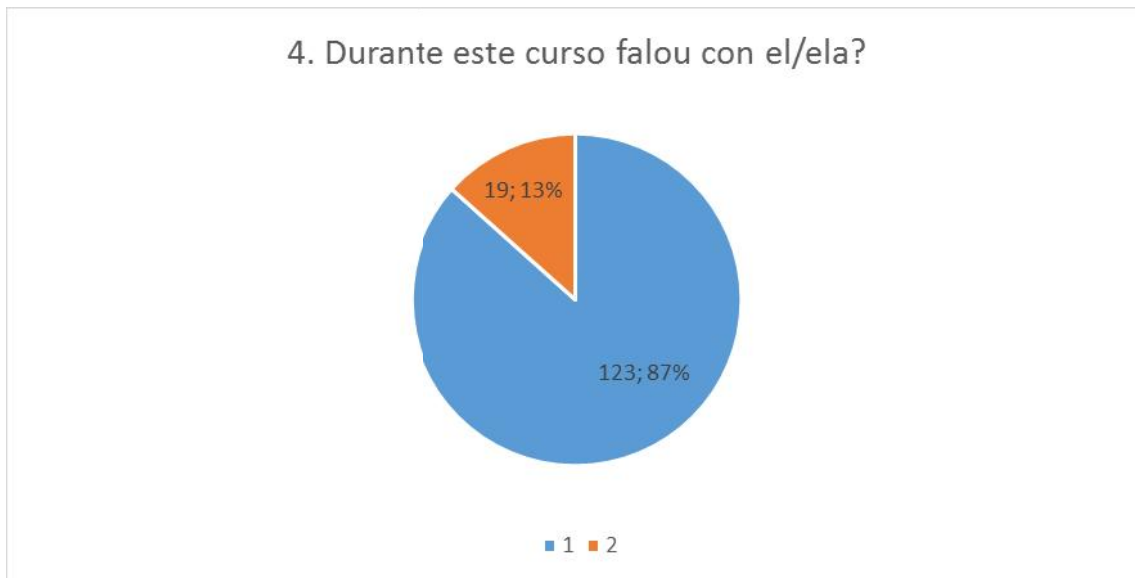
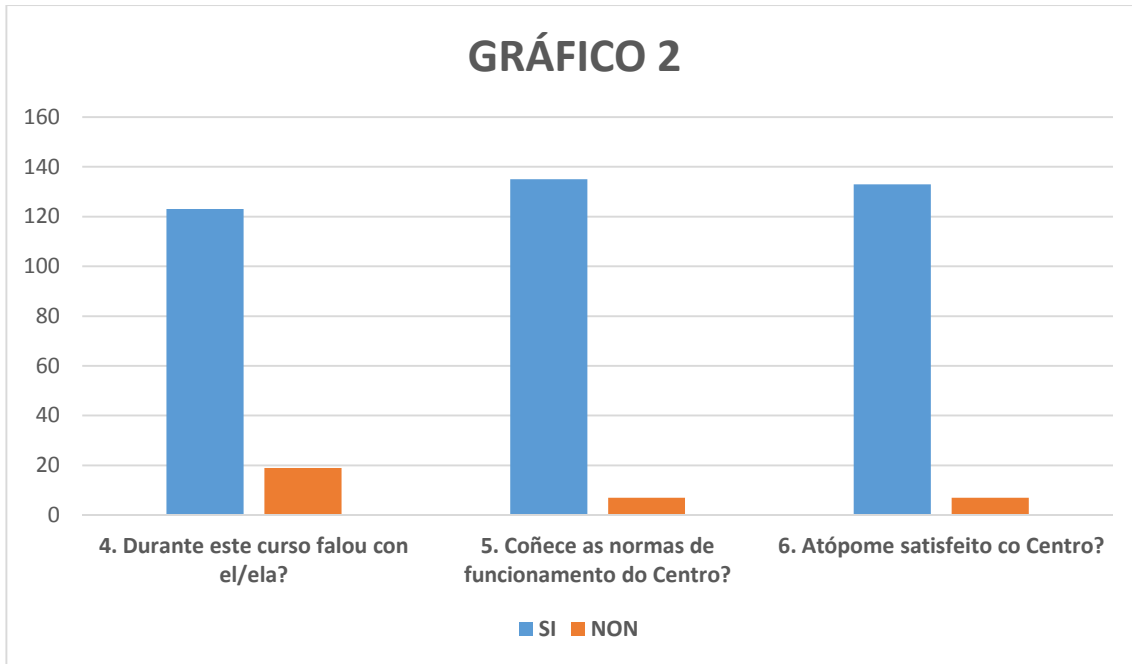


## 2. Co resto do profesorado en xeral?

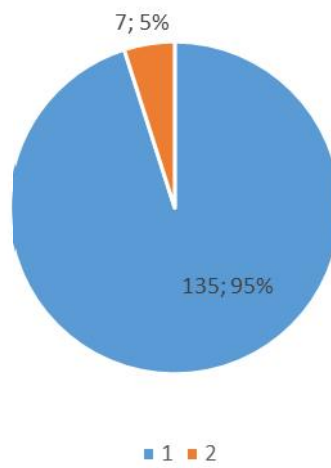


## 3. Como se leva co titor/a do seu fillo?

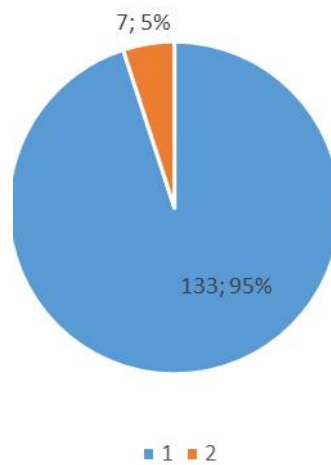




## 5. Coñece as normas de funcionamento do Centro?

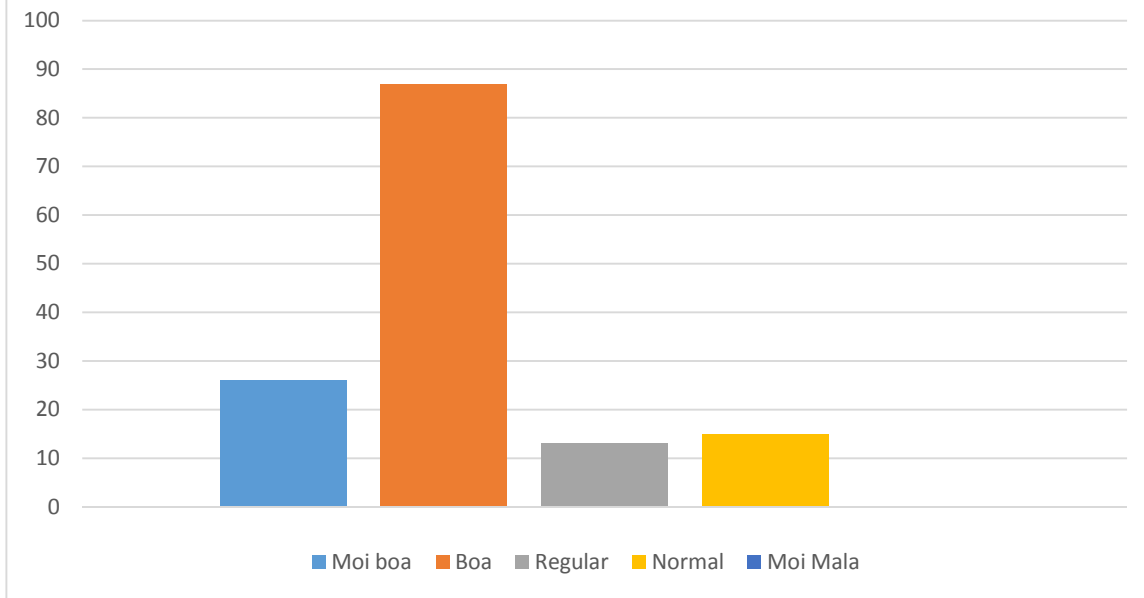


## 6. Atópome satisfeito co Centro?

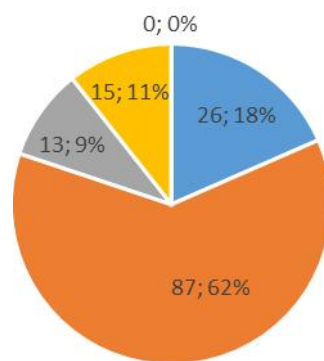


### GRÁFICO 3

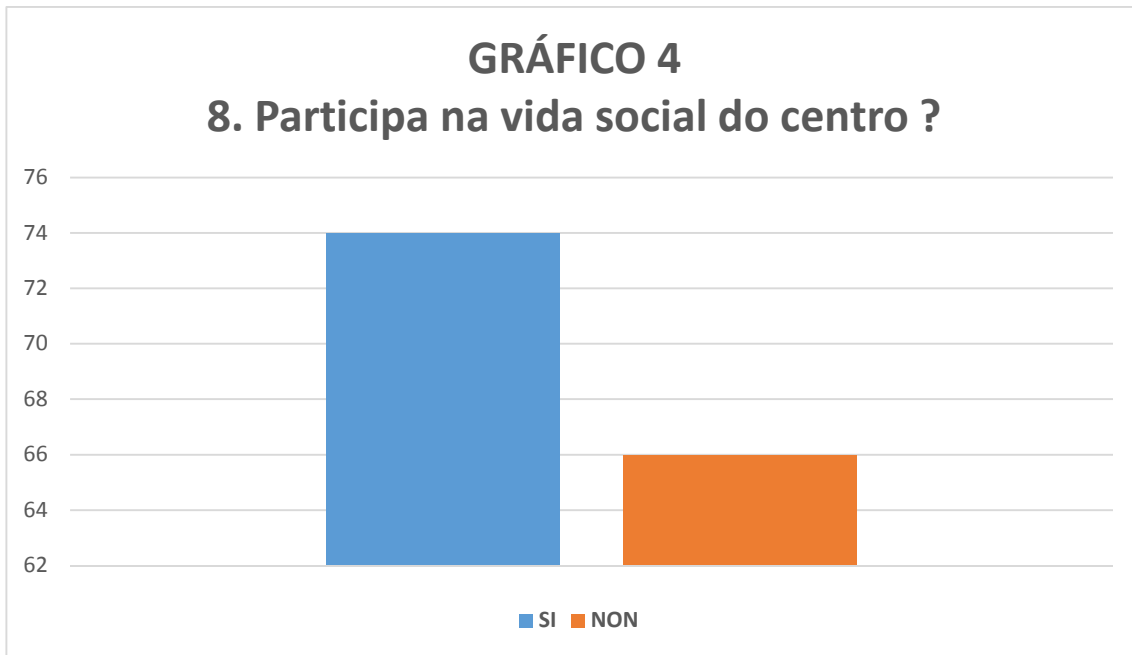
#### 7. Considera que a convivencia no centro é:



#### 7. Considera que a convivencia no centro é:

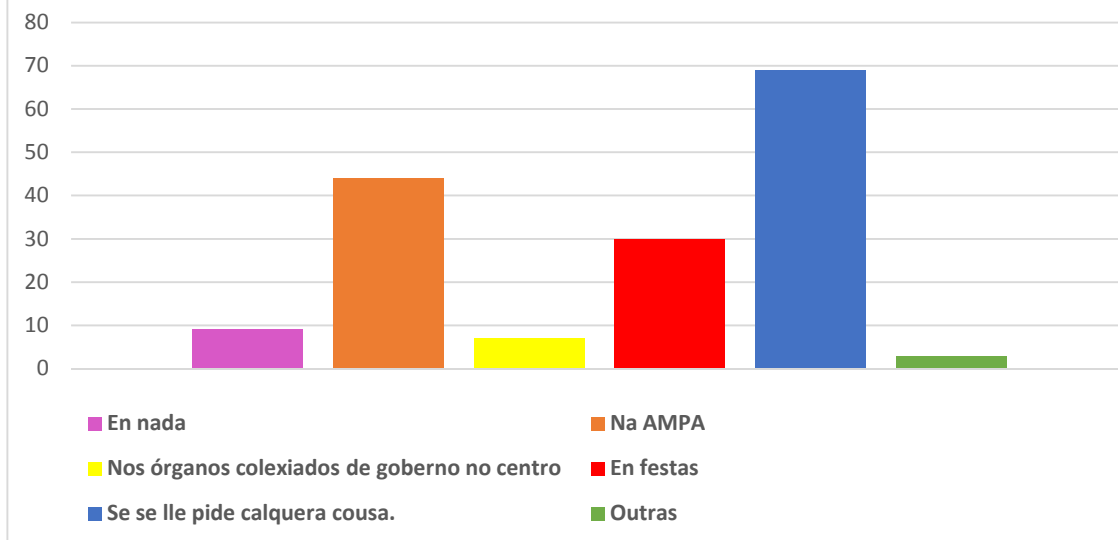


■ 1 ■ 2 ■ 3 ■ 4 ■ 5

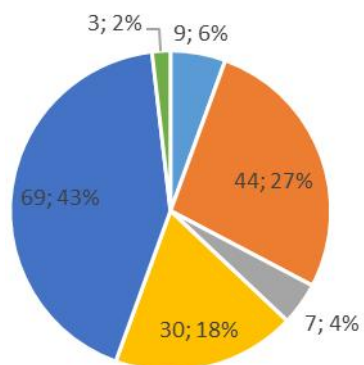


## GRÁFICO 5

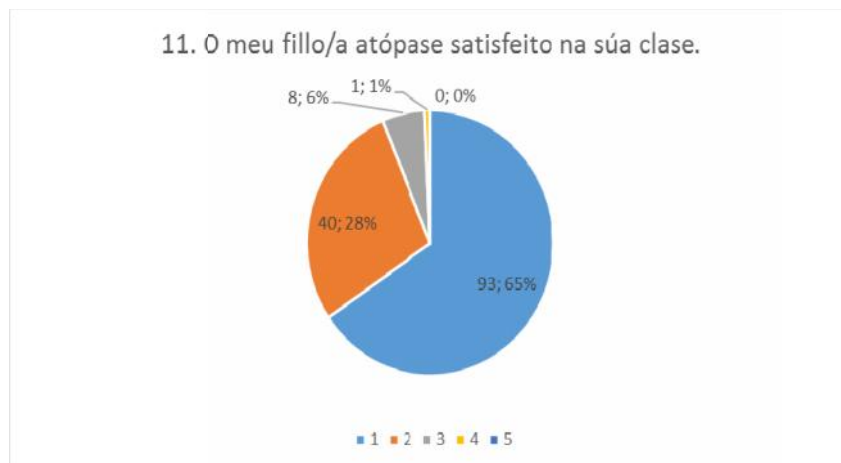
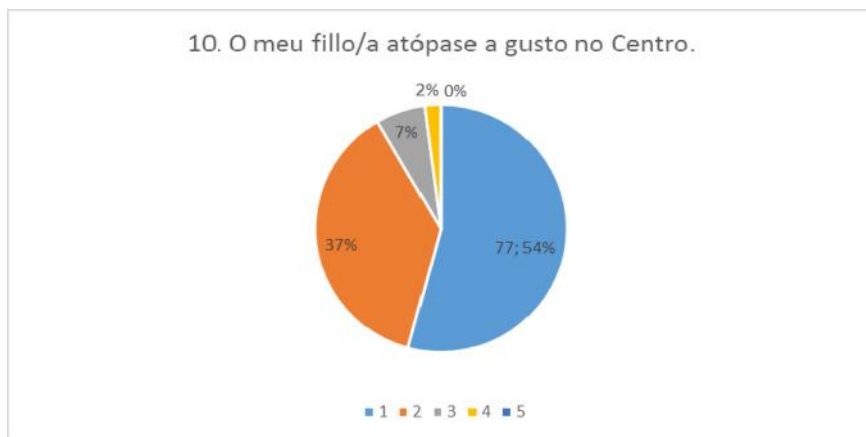
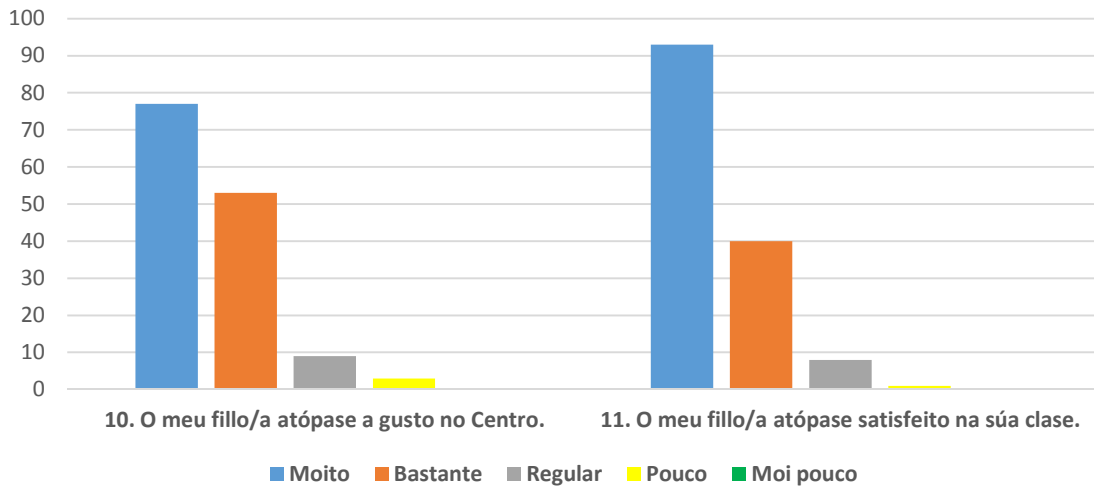
### 9. En que participa?



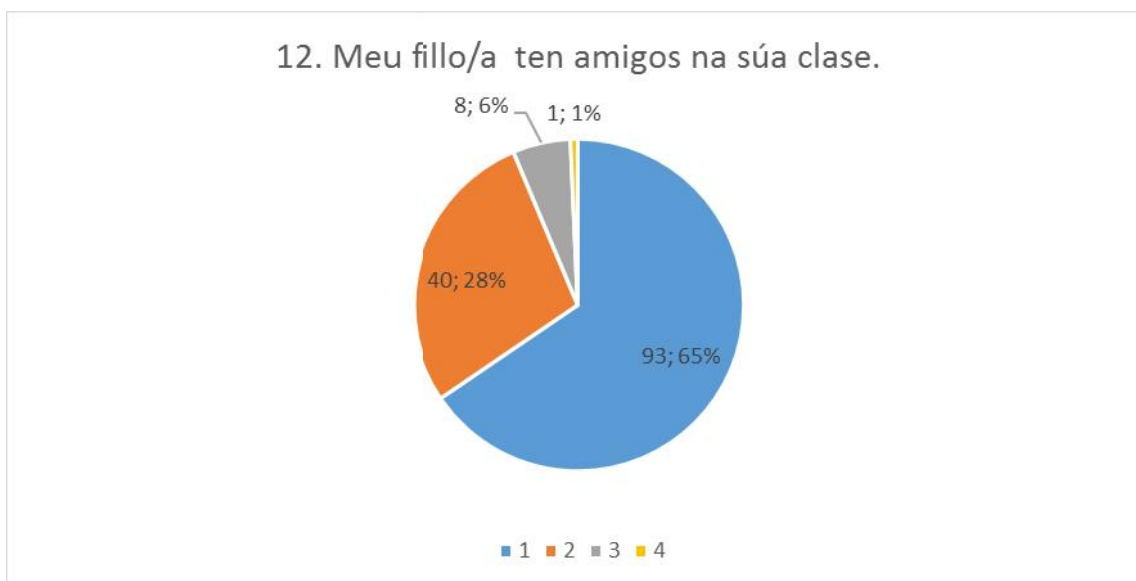
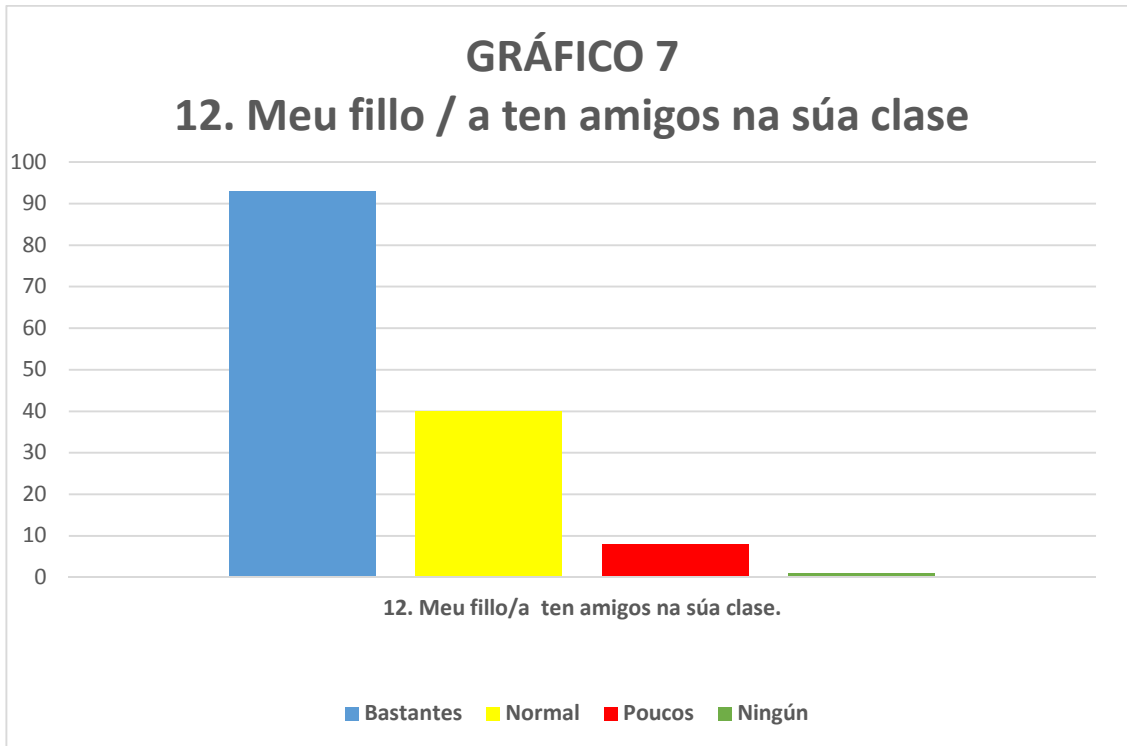
### 9. En que participa?



## GRÁFICO 6

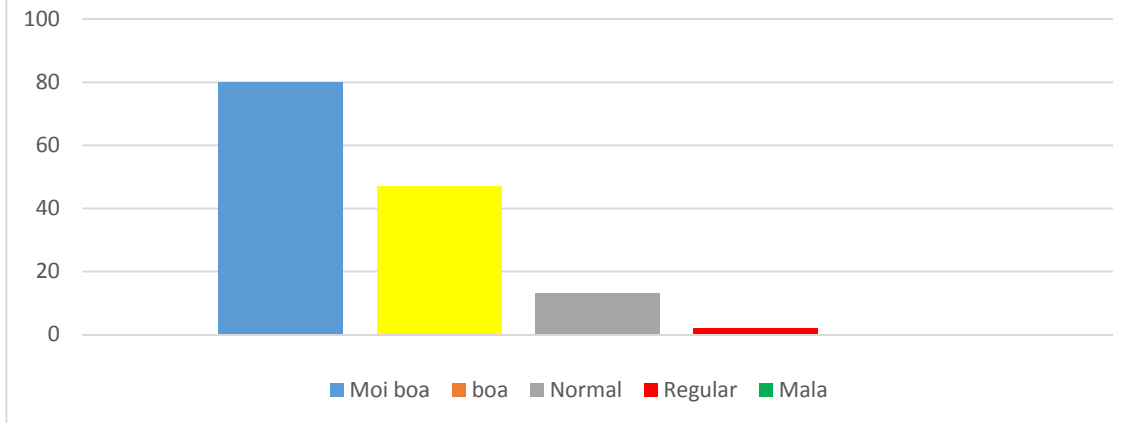




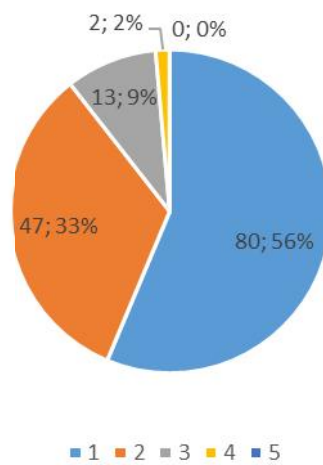


## GRÁFICO 8

### 13. A relación do meu fillo/a co profesorado , en especial co titor/a, é :

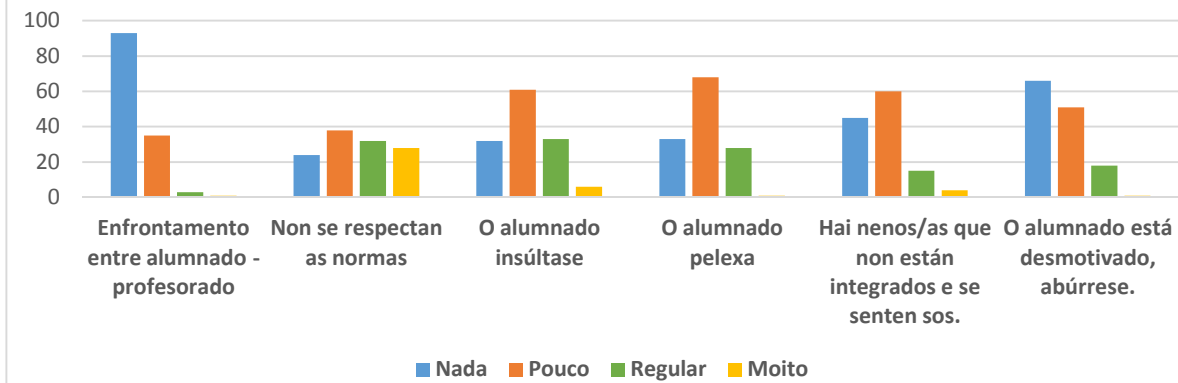


### 13. A relación do meu fillo/a co profesorado , en especial co titor/a, é :

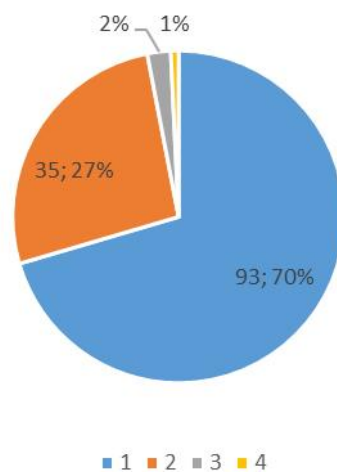


## GRÁFICO 9

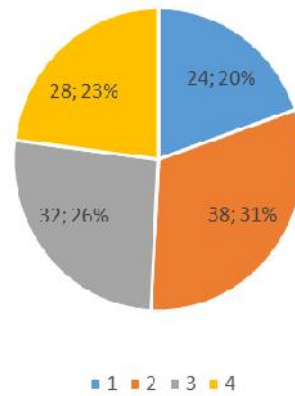
### 14. Na súa opinión. Cales dos seguintes fenómenos ocorren no centro?



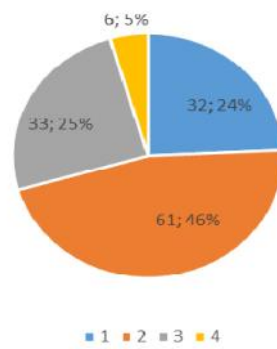
### Enfrontamento entre alumnado -profesorado



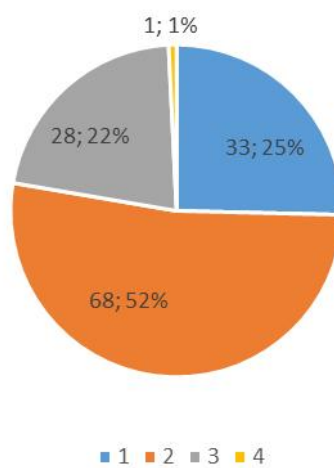
## Non se respectan as normas



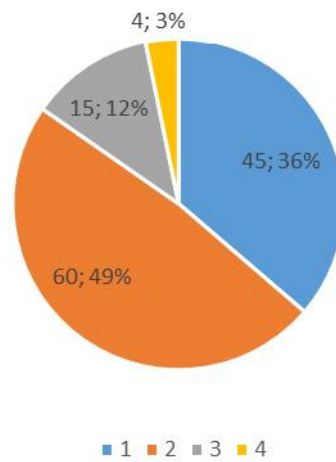
## O alumnado insúltase



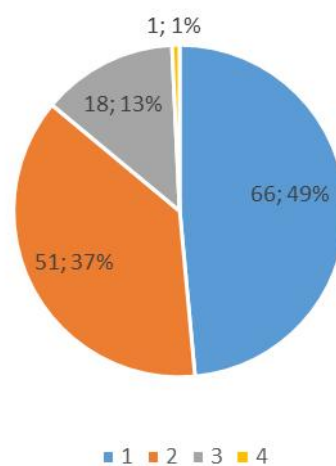
## O alumnado pelexa



Hai nenos/as que non están integrados e se senten sos.

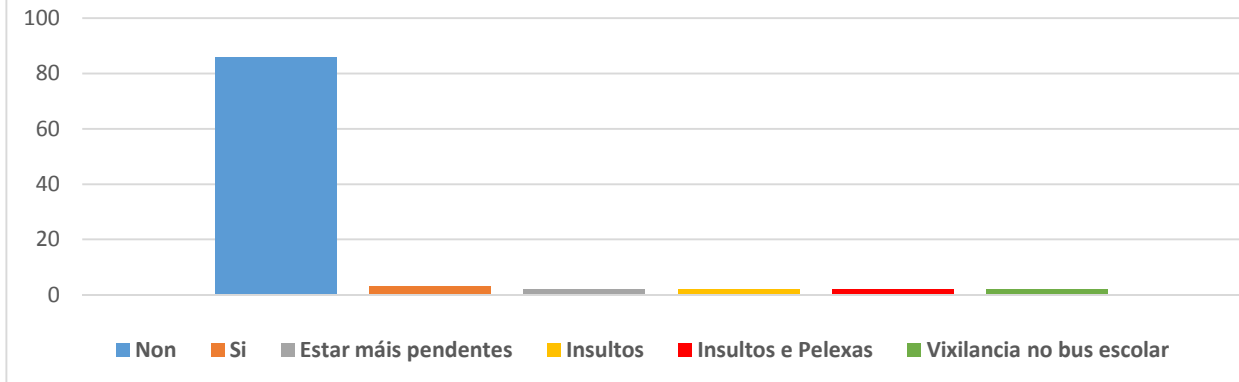


O alumnado está desmotivado, abúrrrese.



## GRÁFICO 10.

15.Das situacións anteriores, ou outra .  
Cre que hai algunha que afecta persoalmente ao  
seu fillo/a ?



15.Das situacións anteriores, ou outra .  
Cre que hai algunha que afecta persoalmente ao seu fillo/a ?

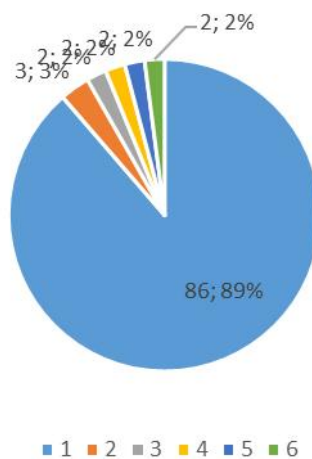
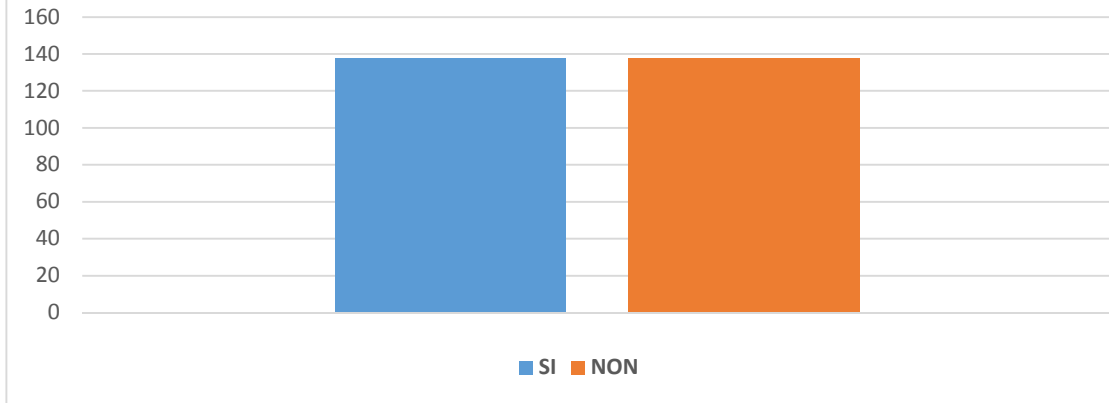


GRÁFICO 11

16. Transmite vostede ao seu fillo/a respecto pola educación, a escola e os mestres?



16. Transmite vostede ao seu fillo/a respecto pola educación, a escola e os mestres?

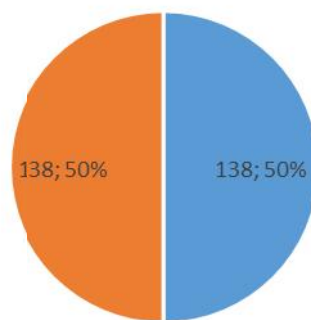


GRÁFICO 12

17. Que aspectos da convivencia cre que son mellorables?

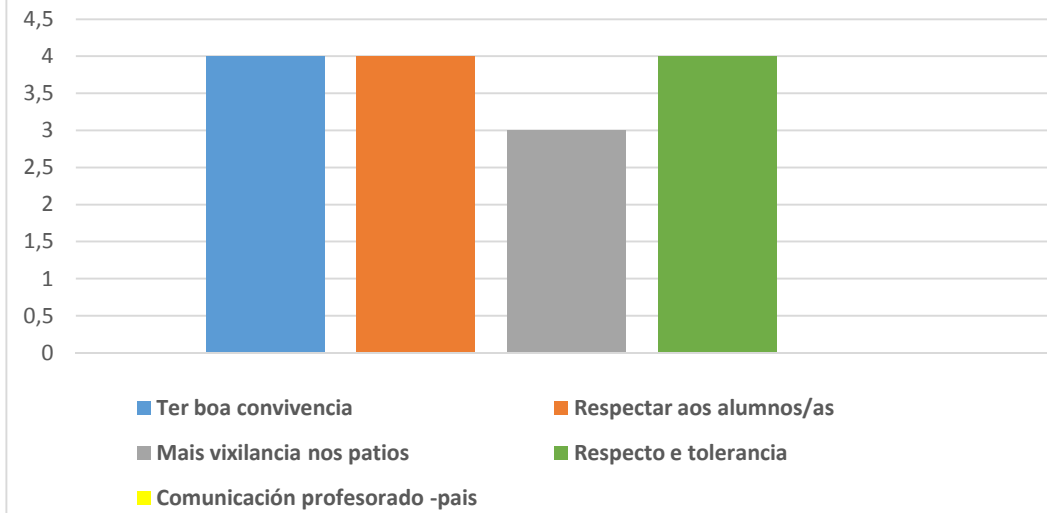


GRÁFICO 12

17. Que aspectos da convivencia cre que son mellorables?

