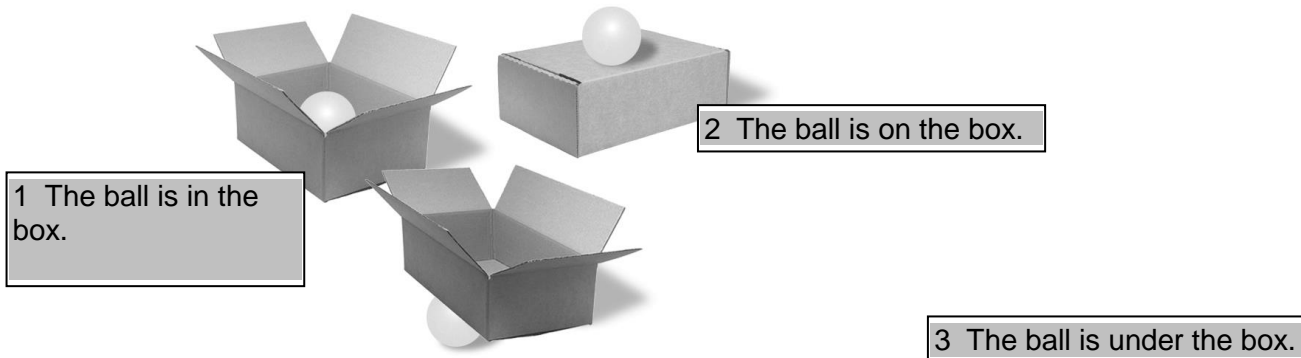


Name:

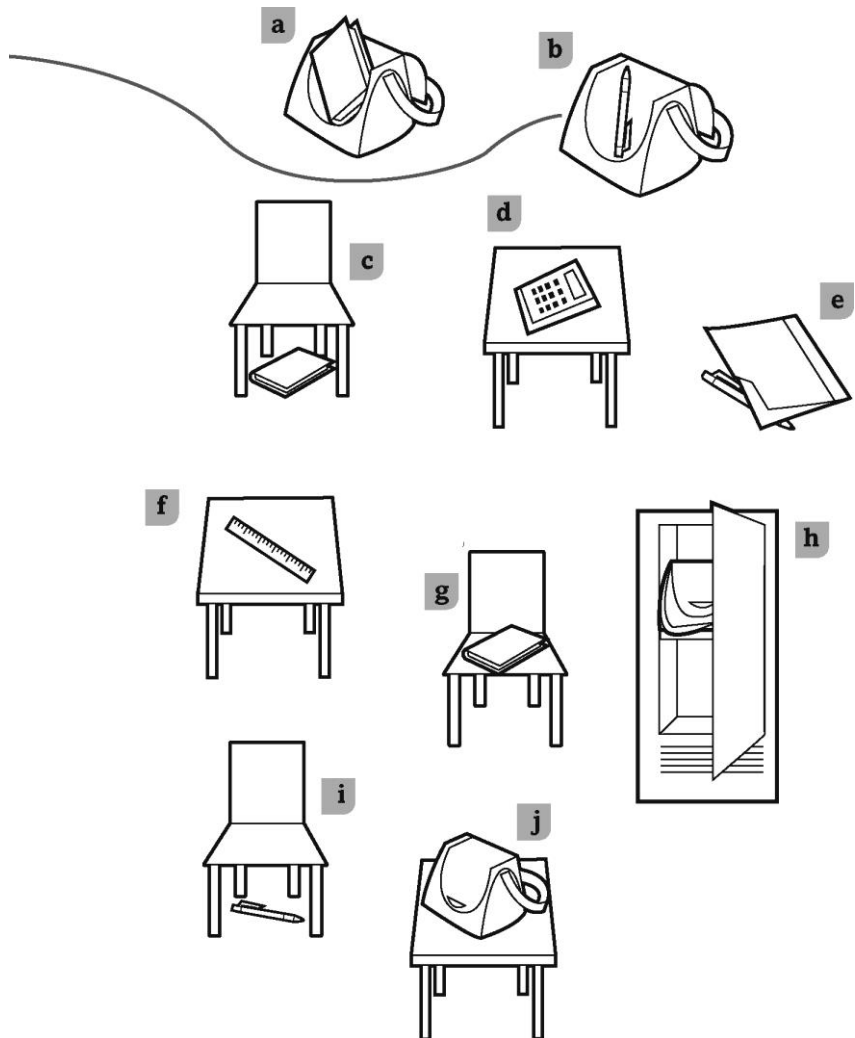
1 Lee y traduce.



2 Une las frases con los dibujos.

The pen is in the bag.

- 1 The bag is on the table. **J**
- 2 The bag is in the locker. **H**
- 3 The book is under the chair. **C**
- 4 The ruler is on the table. **F**
- 5 The book is in the bag. **A**
- 6 The pen is under the folder. **E**
- 7 The book is on the chair. **G**
- 8 The calculator is on the table. **D**
- 9 The pen is under the chair. **I**



3 Completa las palabras.

o n the chair

- 1 i n_ the box
- 2 _u_nder_ the chair
- 3 i n_ the bag
- 4 on_ the desk
- 5 un_ der the desk
- 6 o n_ the box

Name:

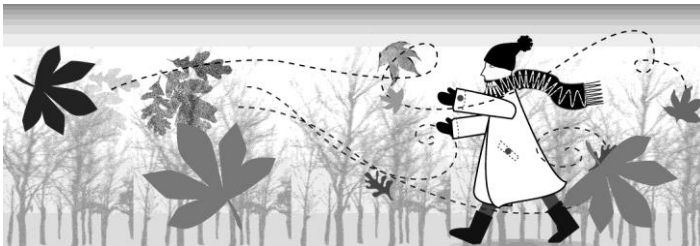
1 Lee y traduce.



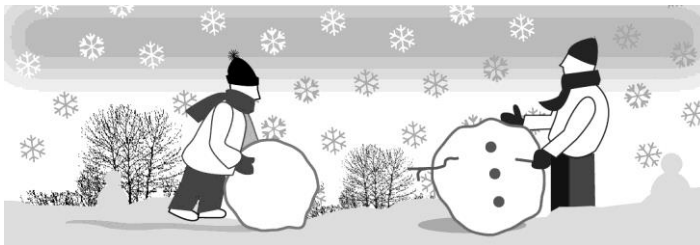
1 spring



2 summer



3 autumn



4 winter

2 Busca las estaciones. Luego escríbelas.

autsprwinterpmmerspringumnat

summeringerautumntersr

winter

1 spring

2 summer

3 autumn

3 Busca las estaciones en la sopa de letras. Luego escr belas.

P	S	P	R	I	N	G
R	I	N	G	S	W	W
A	U	T	U	M	N	I
U	E	R	U	T	I	N
T	S	A	N	M	N	T
U	U	M	R	E	T	E
S	U	M	M	E	R	R

s pring

1 s **ummer**

2 a **utumn**

3 w **inter**

4 Busca las palabras ocultas. Luego escr belas.

s **S U r M i M E n u R t u**

summer

s t **W h I i N n T g s E g u R a**

WINTER

g **A u U m T i n U r M b N w s p**

AUTUMN

a **S u P t u R w I i n N e G a n g**

SPRING

Name :

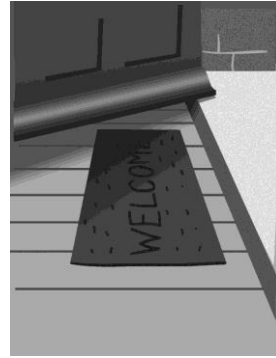
1 Completa las palabras con **a, e, i, o, u.**



b a thr o m



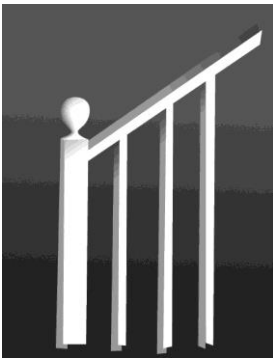
1 di ni ng r **oo** m



2 h **a** ll



3 be dr **oo** m



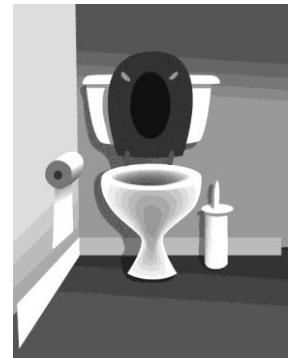
4 st **a** irs



5 k **i** tch **e** n



6 li vi ng r **oo** m



7 t **oi** le t

Cuál es la zona de la casa que falta? **Garden**

2 Busca tres zonas de una casa en cada círculo.

k l s t i t i a v i c i n h g e r o r n o s m

- a kitchen
- b living room
- c stairs

1 **b d a h i n t a i n h l g r o r o l o m o m**

- a **bathroom**
- b **hall**
- c **dining room**

2 **b t g o a e r d i d l e r e o t n o m**

- a **bedroom**
- b **toilet**
- c **garden**