

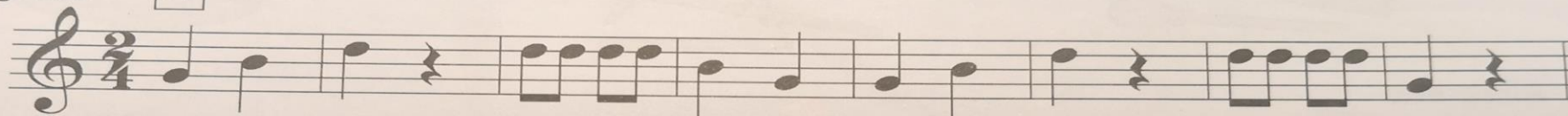
1. Toca coa frauta doce as dúas voces desta canción; lembra solfexala primeiro e NON escribas o nome das notas.

Rondó primavera (V. Gil)

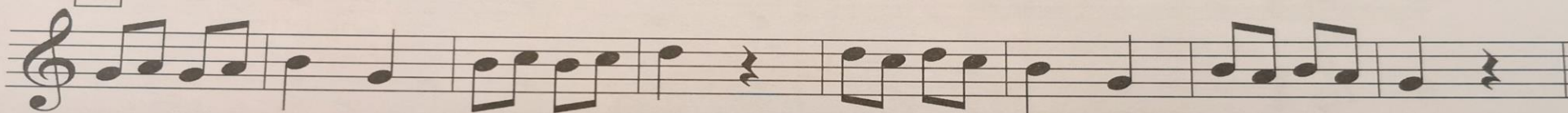


Allegretto

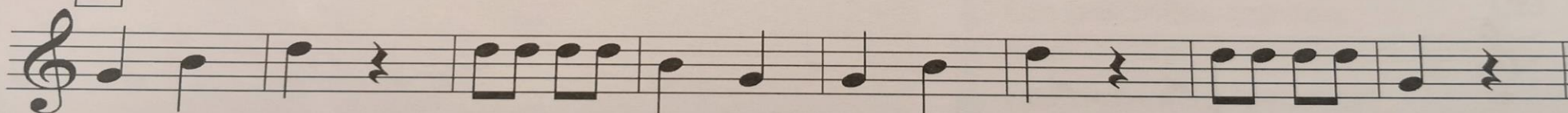
A



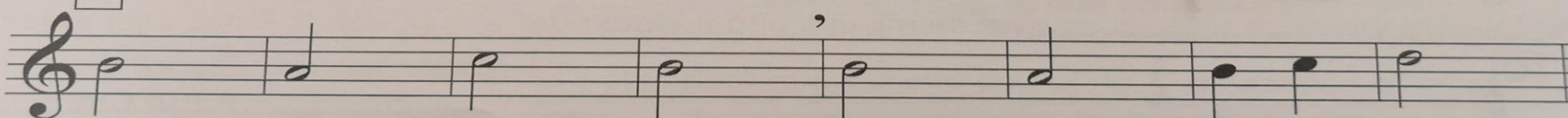
B



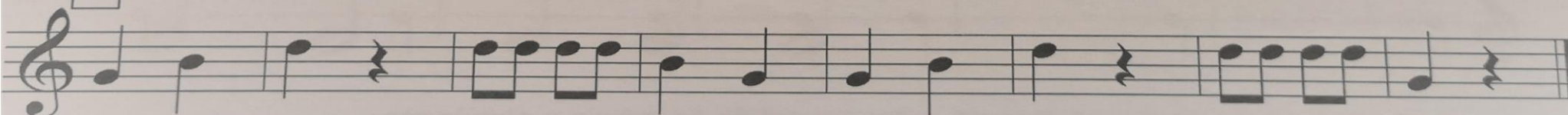
A



C



A



2. Atopa os erros e reescribe a seguinte partitura correctamente.

The image displays a musical score for correction on a five-staff system. The notation includes treble clefs, a key signature of one flat, and a time signature of 3/4. The score is divided into two systems. The first system consists of two staves: the top staff contains a melodic line with several errors, and the bottom staff contains a bass line with a repeat sign and a second ending marked '2.'. The second system consists of three empty staves, each with a treble clef. The errors in the first system include: 1) A treble clef that is not standard for the key signature and time signature. 2) A melodic line that contains several notes that are not in the key signature (sharps) and some that are not in the time signature (beats). 3) A bass line that contains a note that is not in the key signature and a note that is not in the time signature. 4) A second ending marked '2.' that contains a note that is not in the key signature and a note that is not in the time signature.

Diagram illustrating the first octave of a flute, showing the fingerings for each note from Do to Si. The notes are: Do, Do#, Re, Re#, Mi, Fa, Fa#, Sol, Sol#, La, La# (Si b), and Si. The corresponding fingerings are shown on the fingerboard diagrams above the staff.

Do Do# Re Re# Mi Fa Fa# Sol Sol# La La# (Si b) Si

Diagram illustrating the second octave of a flute, showing the fingerings for each note from Do agudo to Do sobre agudo. The notes are: Do agudo, Do# agudo, Re agudo, Re# agudo, Mi agudo, Fa agudo, Fa# agudo, Sol agudo, Sol# agudo, La agudo, La# agudo, Si agudo, and Do sobre agudo. The corresponding fingerings are shown on the fingerboard diagrams above the staff.

Do agudo Do# agudo Re agudo Re# agudo Mi agudo Fa agudo Fa# agudo Sol agudo Sol# agudo La agudo La# agudo Si agudo Do sobre agudo